

Balearic Islands

Call free on 0800 707 6229 or enquire
for Huge Extra Savings



CLASSIC COLLECTION



CLASSIC
COLLECTION

Expertise, service and perfectly personalised luxury holidays

Expertise, service and perfectly personalised service are what make Classic Collection an award-winning holiday company. They are also the reasons why customers choose us for their holidays time and time again. Our travel experts have been carefully recruited for their destination knowledge and excellent customer service skills. They go above and beyond to design the perfect holiday for you.

Whether you're travelling individually, as a couple, with family or a group of friends, we'll make your holiday dreams happen. From beautiful boutique properties to larger luxury resorts, we've handpicked hotels which offer something for everyone.

This brochure provides valuable insight into some of the finest hotels in the perennially popular Balearic Islands: superb all inclusive resorts, adult only places to holiday, family favourites, and some beautifully boutique properties. We've also highlighted a number of travel options including island hopping suggestions, and two and multi-centre holidays.

We hope that you enjoy browsing through our brochure, and we look forward to using our experience and expertise to help you make the most suitable choices. Once you've found the holiday you're looking for, call us and we'll make all the necessary arrangements with the minimum of fuss; nothing is too much trouble for our travel experts.



Alex Callahan

Product and Purchasing Manager
Balearic Islands





Mallorca

Pages 16-71



Menorca

Pages 72-85



Ibiza

Pages 86-101

This brochure was printed on 31 March 2023.

Trust our expertise

WE'LL TAKE CARE OF EVERY DETAIL

Our travel expertise is defined by more than thirty years' experience of organising holidays for those who love luxury and expect exceptional personal service.

Our travel experts, carefully recruited for their destination knowledge and excellent customer service skills, are on hand to offer advice and inspiration. Share your travel ideas with us, and we'll work together to create the holiday that's perfect for you.

At Classic Collection we value...

OUR PERSONAL APPROACH

In a world with a dizzying choice of holiday options, our well-travelled experts have curated a collection of handpicked destinations and a fine assortment of charming boutique hotels and luxurious resort properties. Let us guide you towards the best private excursions and guided tours. Enjoy discreet, unobtrusive service in resort via our experienced resort agents or our 24 hour UK emergency helpline. As we work with a wide selection of airline partners, you can choose exactly how long you'd like to stay. Our personal approach to worldwide holidays allows us to tailor-make the perfect luxury holiday, with the minimum of fuss, just for you.

OUR CUSTOMER SATISFACTION

As proud members of the Institute of Customer Service, customer satisfaction is at the heart of everything we do; we only work with selected partners who share the same customer focus. The hotels that we have selected offer the very best quality, service and safety measures, and our handpicked destination partners are some of the longest established and most widely respected tour operators in the travel business. Rather than compromise on quality, we prefer to offer you better value and give you more opportunities to enjoy your time away.

YOUR PEACE OF MIND

Our customers have been entrusting us with their holiday plans since 1988. Now, more than ever before, it's important to have the reassurance of booking your holiday through a trustworthy company. Once you've booked, you can rest assured that we'll be keeping a close eye on any changes or travel requirements and advising you with minimal disruption to your holiday plans, backed by our Classic Commitment and ABTA, IATA and ATOL protection.



Relax, we've thought of everything

BEFORE YOU TRAVEL

As we've been working with the majority of our hotel partners for many years, contacting our hoteliers at enquiry stage, to ensure that your preferred room types, interconnecting rooms, or suites are available to book, comes as second nature. We're more than happy to discuss specially adapted room types, accessibility requirements, and the overall suitability of our resorts and hotels, with those of our customers who have more specific needs.

TAKE OFF IN STYLE

Make your journey to the airport as relaxing as possible by taking advantage of our featured chauffeur and personalised VIP meet and greet services. Once you've experienced the services of a personal assistant at the airport, it's a hard habit to break. Lounge facilities prior to flying out and on your return, combined with cabin upgrades and enhanced flight services really do make the journey part of the holiday. From no-frills airlines to seaplanes and private jets, we enjoy longstanding relationships with so many airlines that we can book whichever airline suits the way you like to travel.

PRICE POINTS AND STAR RATINGS

Our prices are displayed as symbols reflecting different price points: £ is up to £1500, ££ is between £1501 and £3000, and £££ is over £3001. These per person prices are intended only as a guide and are calculated using the lead-in board and room type for two adults sharing, and include return flights, hold luggage and private transfers. They are based mainly, but not exclusively, on a seven night duration. We'd be delighted to supply you with an up-to-date quote based on the latest prices, so just call us on 0800 008 7288.

Our star ratings may not be the official star ratings of the properties featured as we prefer to trust in the guidance of our expert product managers. We love our boutique properties which are small and intimate, offer the ambience of a private home and a characterful approach to design and décor without losing sight of personal service.

THANK YOU

Many of our customers choose to travel with us again and benefit from a loyalty reward of up to £80 per booking. Should you wish to recommend friends and family to travel with Classic Collection, as a thank you we'll send you a complimentary bottle of Champagne.



WE'RE READY WHEN YOU ARE

Our website is informative and inspirational, but nothing beats having a conversation about your holiday plans. Once you're ready to explore your options, our travel experts will be there to share a level of expertise that simply isn't available online. Together we can show you what your perfect holiday looks like.



Mindful travel

ECOLOGICAL INITIATIVES

Collaborative eco-friendly practices add an extra special dimension to a holiday and give hope for the future and to future generations.



With the aim of preserving the quality and beauty of holiday destinations for future generations, many hotels have developed sustainability initiatives to improve their ecological footprint. As a result, a number of our featured hotels have received awards from, or are affiliated to, ecological organisations such as Travelife, Green Key and Blue Flag.

Palladium Hotel Group continues to reinforce its committed approach to sustainability by advocating renewable energies, the reduction of plastics, and a focus on working and supporting local producers. In Spain, one hundred per cent of the energy consumed in all Palladium Hotel Group's properties comes from renewable energies, which are either guaranteed at source, or, in the case of its properties in Ibiza, via the latest photovoltaic panels.

Iberostar Hotels & Resorts have been at the forefront of mindful travel since 2018 when it launched its Wave of Change policy, concentrating on the reduction of plastic pollution, the promotion of sustainable fishing and the conservation and protection of marine ecosystems throughout its properties worldwide.

In 2020 Iberostar announced its ambition to reach Carbon Neutrality by 2030, and in 2022, at COP27, the 27th Conference of the Parties to the United Nations Framework Convention on Climate Change, launched its decarbonisation roadmap.

A case study in sustainable tourism is Mallorca's Hotel Bon Sol whose family owners have had planted nearly a quarter of a million teak and rainforest trees to offset the carbon footprint of the hotel and its guests' flights to and from Mallorca. It's an ongoing project with more trees being planted as more customers travel.

A number of our featured hotels are attempting to reduce carbon emissions by exploring alternative sources of energy, sourcing food as locally as possible to reduce food miles and encouraging guests to conserve energy, recycle and cut down litter, waste and pollution. Should you have any questions about the sustainability credentials of any of our featured hotels, please ask our travel experts.



Classic Collection Holidays is keen to mitigate our environmental impact wherever possible. In our offices we reduce, re-use, re-cycle. The paper used in our brochures is from sustainably managed forests and controlled sources. We're also reducing the number of brochures that we produce by extending each brochure's life cycle from 12 to up to 24 months.

How do you like to holiday?

WITH ALL THE FAMILY

There's no need to compromise on luxury when you're travelling with youngsters. Our family friendly properties have been handpicked for their excellent range of facilities, fantastic locations, superb service, generously sized family, and interconnecting rooms and suites, supervised children's clubs, great gastronomy choices and overall child friendliness. For further information please refer to pages 12 and 13.

BEAUTIFULLY BOUTIQUE

Unique and beautifully designed with exquisite attention to detail, boutique hotels offer comfort, style and personal service to match many an illustrious hotel. They're small and intimate with the ambience of a private home and an individual approach to design and décor.

LUXURY AND BEYOND

There are some destinations people choose to visit specifically because of the hotel in which they wish to stay. We feature a number of hotels with peerless reputations and timeless appeal. These distinguished properties, identified in this brochure as Luxury Hotel, satisfy the most discerning guests.

WITH EVERYTHING PAID FOR

We feature a good choice of excellent Balearic Islands' resorts offering all inclusive holidays at more affordable price points. Nowadays all inclusive concepts can feature a remarkable variety of inclusive services offering conspicuously good value for money, and allowing total relaxation on your holiday secure in the knowledge that everything is already paid for.

LEAVING THE KIDS BEHIND

We all need a break from time to time, and whether it's your own or everyone else's little ones you wish to leave behind for a while, our sophisticated adult only hotels offer the luxury of a child free environment in which to unwind, relax and recharge. Our luxury adult only holidays are the perfect getaway if you're looking for a quiet and peaceful escape for you, a romantic retreat for two, or seeking a relaxing time away with like-minded adult friends.





There's more to discover...

THE OPEN ROAD

For the freedom to take in the pleasures of the open road at your own pace, we can arrange fly drive holidays. We'll tailor-make your own preferred itinerary and ensure that your overnight stays are booked at the best hotels.

OUR GUIDES AND DESTINATION PARTNERS

No-one has a better understanding of the culture and customs of their destinations than our local guides. They are there to impart their insight to you. Our carefully chosen destination partners have years of experience. Our shared customer service values are reflected in their organisational skills and quality of guides, drivers and vehicles.

DISCOVER MORE COMBINATIONS

With frequent ferry sailings and plenty of internal flights, travelling between the islands is quite common in the Balearic archipelago. The most leisurely and cost effective way is by ferry. The islands and the Spanish mainland also have ferry and air connections between them. The plane is, of course, the fastest way of travelling and has a relatively moderate cost, although it will depend on the time of year at which you travel. Mallorca's airport offers a greater choice of flying than those of the other islands.

Our travel experts can offer guidance in combining resorts and contrasting areas of the Balearic Islands to make your precious holiday time away feel much longer. You could even combine a stay on the Spanish mainland, for example in Barcelona or Madrid, with a few days spent on the islands. Alternatively take advantage of the inter-island flights from Palma and share your time between the Balearics and the Canary Islands.

You'll find some of our multi-centre and island hopping holiday suggestions on pages 17, 73 and 87. Whichever cities, resorts and islands you would like to combine, we can help inspire you.

For all the family

The Balearic Islands are amongst the best destinations in the Mediterranean for a family holiday. Beyond sandy beaches and clear waters that are accessible year-round for sun-bathing, swimming and a multitude of diverting watersports and water-based activities, there are many water parks and places of interest to keep the whole family entertained.

FAMILY ACTIVITIES

Mallorca has no fewer than three water parks: Western Water Park in Magaluf, Hidropark in Alcudia and Aqualand in El Arenal. The family will stay occupied for hours at Mallorca's excellent marine park, which features more than 8000 animals of 700 different species, in more than five million litres of salt water. La Reserva Galatzo nature reserve features caves, waterfalls and a variety of wildlife, bird of prey displays, rock climbing, swinging bridges, and

canyons. Also try the Amaze'n Laberintos in Playa de Muro. In Menorca try family kayaking from caves to coves. The Lloc de Menorca petting zoo includes goats, cows, sheep as well as lemurs, macaques, wallabies and emus. The Los Delfines Aquacenter offers slides, shutes, pools and karting. Ibiza features Aguamar Water Park, the Cap Blanc Aquarium, located in a large natural cave, and the illuminated stalactites and stalagmites of Can Marca Caves.



FAMILY FRIENDLY

We know how important it is to get everything right, especially when travelling with young children. You can rest assured that we've got the knowledge, experience, and the support in resort, to make sure that the whole family has the best possible holiday.

A number of our featured hotels offer facilities for families: interconnecting rooms, children's pools, play areas, early mealtimes and child-friendly menus. Babysitting services, high-chairs, cots, crèches, children's clubs and activities for teenagers may be offered on a complimentary basis, or payable locally, and operating dates for clubs may vary. Some hotels provide kettles, fridges and microwaves. If these additional services are important to you simply ask our travel experts for details.

Many customers, especially those travelling with small children, like to have use of kitchenette facilities such as a fridge and kettle. In Mallorca the deluxe Villa at La Residencia, A Belmond Hotel in Deya, page 60, sleeps seven guests and is perfect for families with its fully equipped kitchen, private pool and superb views. Son Bunyola Hotel & Villas in Banyalbufar, page 62, includes three luxury villas with a high level of privacy, ample space both inside and out, a private swimming pool and stunning views. In Punta Prima in Menorca, some suites at the five star Insootel Punta Prima Prestige Suites & Spa, page 83, feature kitchenettes with hob, microwave and fridge.

OUR RECOMMENDATIONS

Our travel experts suggest the following family-suited hotels to ensure that the whole family has the best possible time away.

Mallorca Zafiro Palace Alcudia, pages 22 and 23, Ibersotar Playa de Muro, page 25, Grupotel Parc Natural & Spa, page 27, and Zafiro Palace Palmanova, page 53.

Menorca Melia Cala Galdana, page 77, and Insootel Punta Prima Prestige Suites & Spa, page 83.

Ibiza Hard Rock Hotel Ibiza, page 97.

The Balearic Islands

The Balearic Islands, to the east of mainland Spain, combine the best of all that is Spanish and Mediterranean. Mallorca is geographically and culturally rich, Menorca boasts gentle countryside, Neolithic remains and neo-colonial architecture, and Ibiza, although famed for its uninhibited nightlife, also has a quieter side of countryside and coastline.

MALLORCA

With its diversity of culture, history and natural terrain, Mallorca captivates everyone who visits. From the thriving coast with fantastic beaches to rural villages and mountain retreats, Mallorca suits families with youngsters, romantic couples, cyclists, keen walkers and rambblers, bird watchers, and those simply wanting to relax. Mallorca's contrasts include rugged mountains, gentle hills, woods and forests, and beautiful coves and sandy bays forming a coastline of over 500km. The seafaring capital of Palma is a vibrant, sophisticated city, with great boutique shopping and a dramatic Gothic Cathedral. This major architectural landmark, with its striking exterior, stunning interior, and rose window which is the largest in Europe, is not to be missed, as is a pre-bookable visit to its roof terraces. For a fascinating insight into the life and work of Robert Graves, visit Casa Graves in Deya. The house, which he had built, is a fascinating tribute to the British writer and poet who moved to Mallorca in 1929.



Cala Gat, Mallorca





Cap de Favaritx, Mahon, Menorca

MENORCA

Visitors return again and again to Menorca which offers areas of natural beauty which are almost unrivalled elsewhere in the Mediterranean. The island is loved for its gentleness and tranquillity, its peace and quiet, the draw of the Mediterranean, the delightful scenery of green countryside dotted with prehistoric monuments, and the pretty towns housing noble historic mansions. Menorca's coastline enjoys a protected status which is apparent in its unspoilt countryside, abundant clean soft sand beaches, and untouched coves. S'Albufera des Grau Nature Park is a protected freshwater lagoon and shoreline which is a haven for wetland birdlife such as coots and fish eagles, and species of lizards and tortoises.

IBIZA

Ibiza's Old Town features a magnificent cathedral, elegant harbour, sophisticated restaurants and designer boutiques. Inland are hamlets with pretty whitewashed churches, patchworks of groves of olives and figs, dense pine forests and hilly terrain offering magnificent coastal scenery. The entire coastline is made up of stunning beaches and remote coves. There's also the world-famous club scene which isn't obvious to those not participating; serious all night clubbers sleep by day creating two distinct holiday cultures that happily co-exist. Platja de Ses Salines is one of the most gorgeous sweeps of white sand in the whole of the Balearics. Here gin-clear sea is backed by rolling sand dunes and pine woodland. The beach welcomes families and clothing optional sunseekers.



Cala Portinatx Bay, Ibiza



Aguas de Ibiza

GOOD TO KNOW

The Balearic Islands enjoy a temperate Mediterranean climate in high summer with high maximum temperatures lowered slightly and made very pleasant by the cooling influences of the sea. It is warm and sunny from March to November, and slightly cooler from December to February.

Mallorca

Wander through Palma's gothic quarter and wonder at its cathedral. Laze on golden sandy beaches or delight in the Tramuntana Mountains. Enjoy a luxurious stay in a charming manor house or relax in a sophisticated boutique hotel. For romance or fun, action-packed or lazy days, there's something to suit everyone in Mallorca.



There's a sharp contrast between Palma's sparkling, lively bay with its myriad hotels and dazzling nightlife, and the alternative Mallorca of captivating little villages untouched by the passage of time, and hidden well away from the main tourist spots. These villages are sometimes found sprawling on mountain sides, or at the very summit of a mountain pass, as is the case with the most famous and beautiful of them all, Deya. Quaint village beauty is added to by multitudes of trees including ancient olive groves, fragrant almond orchards, refreshing pine forests and ancient oak groves. Mallorca's 500km of coastline features a succession of lovely coves, beautiful sandy beaches and secluded bays with some extraordinary caves to explore. Together with a mild climate and rich cultural history, this delightful island really does offer huge visitor appeal.

The island's top sport is sailing, and there are courses for sailing, scuba diving, canoeing, swimming and water-skiing. The adventurous might like to go paragliding, gliding or take a hot-air balloon trip. There is tennis, indoor football, volleyball, petanque, go-karting, hiking, climbing and horse-riding to be enjoyed. Mallorca boasts 19 golf courses and the fine climate of consistent sunshine and low rainfall makes this an enjoyable golfing destination. There is excellent hiking on Mallorca's Tramuntana mountains and the wetland area of Parc Natural de S'Albufera provides ample opportunities to observe numerous bird species. Mallorca is immensely popular as a cycling destination, with slopes which present varying degrees of challenge, or meandering coastal cycle paths open to all.



Discover more

To add to your holiday enjoyment, our travel experts can organise a two or multi-centre holiday. Here we've highlighted a couple of suggestions. However, you can combine any of our featured hotels, and, as long as there's a flight or a ferry available between your chosen islands, or the mainland and your chosen islands, we can arrange everything for you.

MALLORCA CITY AND BEACH

Experience two different sides of the island of Mallorca. Enjoy Palma, a year-round city-break destination to rival the very best in Europe. A historic city whose handsome palm-lined streets, medieval walls, café-life and towering cathedral impress so many visitors. Then take the scenic journey through Mallorca's beautiful countryside as you head to the beach to enjoy the many delights of the bustling northern seaside resort of Puerto de Soller.

OUR EXPERTS SUGGEST Spend 3 nights at Sant Francesc Hotel Singular, Palma, page 41, and 3 nights at Jumeirah Port Soller Hotel & Spa, Puerto de Soller, page 67.

MALLORCA AND MENORCA

There is a wealth of beaches, bays and coves around Mallorca's coastline. Illetas is a peaceful residential area which offers a small sandy beach, and an array of watersports, just a 20-minute drive from Palma. For a change of scenery head to Menorca, the most rural of the Balearic Islands, and to the quiet resort of Santo Tomas which neighbours the fine stretch of beach at San Adeodata.

OUR EXPERTS SUGGEST Spend 3 nights at Hotel de Mar Gran Melia, Mallorca, page 46, and 3 nights at Villa Le Blanc, a Gran Melia Hotel, Menorca, page 78.



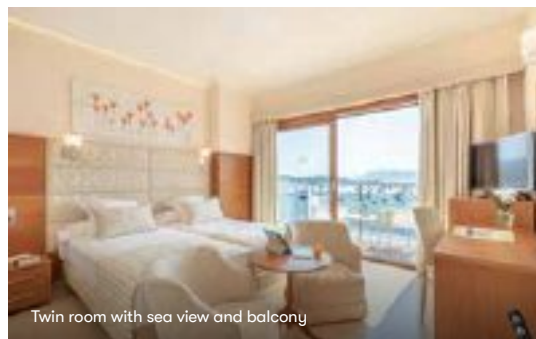
We're delighted to highlight a couple of experiences to enhance your visit to Mallorca. Simply confirm at the time of booking, prior to travelling or once in resort. Alternatively ask our travel experts for further information or for details of the other experiences we offer.

PALMA BAY BY CATAMARAN

Sail along the most beautiful bays and coves of Mallorca's south coast and swim in crystal clear waters off idyllic beaches. Cool down in the sea, and snorkel while the catamaran's crew prepares a delicious on-board barbecue with refreshments.

MALLORCA BY JEEP SAFARI

Enjoy a full day touring in a 4x4 vehicle convoy with fantastic views of Mallorca's wild countryside. Travel across the Tramuntana mountains and visit Finca Es Rafals in Montuiri for a meal. Then swim or relax before making your return journey.



Twin room with sea view and balcony

★★★★

IDEAL FOR COUPLES

Hotel Miramar

PUERTO POLLENSA

TRADITIONAL FAMILY RUN HOTEL

Hotel Miramar occupies a prime position on the promenade in the centre of Puerto Pollensa with many of the resort facilities including numerous bars and fabulous fish restaurants just a few minutes' stroll away. Built in a traditional style with an attractive lounge and bar area, the hotel is well-furnished and offers good standards of guest accommodation.

The reception areas are welcoming and elegantly decorated in traditional Mallorcan style. Impeccably run by its conscientious owners, this friendly, family run hotel prides itself on its top quality personal service.

It is situated in an ideal central location, and just across the promenade from the hotel is the Miramar's own private sun terrace which is next to the resort's narrow sandy beach. Spa Miramar, across from the hotel, is a peaceful relaxation area which is good for early morning exercise.

FEATURES

84 rooms. A la carte restaurant, bar and lounge. Spa Miramar with gym, sauna, jacuzzi, jet showers, pool water jet, relaxation room, outdoor pool, small indoor pool, massage, physiotherapy and beauty treatments.

OUR EXPERTS SUGGEST... Upgrading for the views

Choose a sea view room and enjoy sitting on your balcony at the end of the day and taking in the views of the many yachts bobbing around the bay and life along the seafront promenade.

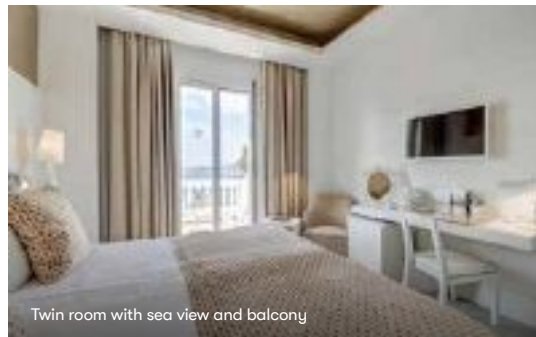
OFFERS AND SAVINGS

Please call us for early booking offers and honeymoon extras, restrictions apply.

Holiday price band: £ up to £1500pp

Based on 7 nights' duration inclusive of return flights and private transfers (approximately 60 minutes from Palma airport), two adults sharing a lead-in room type on a lead-in board basis. Please refer to page 6 'Price points and star ratings'. For an accurate quote based on latest prices please call our travel experts on freephone 0800 008 7288.

We categorise our price bands into £, ££ and £££. They are intended only as a price guide where £ is up to £1500 per person, ££ is from £1501 to £3000 per person and £££ is over £3001 per person.



Twin room with sea view and balcony

★★★★ superior

IDEAL FOR COUPLES

Illa d'Or

PUERTO POLLENSA

METICULOUS SERVICE

Originally built as a summer residence during the Belle Epoque, the hotel first opened in 1929 and now boasts legendary status. A delightfully charming property with a welcoming and friendly atmosphere, Illa d'Or triumphantly combines traditional elegance with modern facilities including a health and beauty centre.

The hotel holds several prestigious marks of quality for excellent customer service and nothing is too much trouble for the staff. Commanding magnificent views of the bay, Illa d'Or has a small beach and private jetty and enjoys an enviable position amidst shady pine trees. The main beach and the resort centre, with its numerous bars and fish restaurants, are just a short stroll away.

Owing to its popularity, many guests return year after year, so it is advisable to book early. Illa d'Or apartments are directly opposite the Hotel Illa d'Or and offer modern, bright and spacious accommodation fusing designer flair with practicality and excellent service.

FEATURES

120 rooms and suites. Outdoor pool, indoor seasonal heated pool. Vital Illa d'Or Health and Beauty centre, gym, jacuzzi, sauna and tennis court. Traditional restaurant, formal dress code for dinner. Lounges, bar with regular live music.

OUR EXPERTS SUGGEST... A dining upgrade

Upgrade to half board and savour a Mediterranean breakfast and waiter served three course dinner in Restaurante 1929, where chef Sebastia Barcelo and his team create delectable dishes.

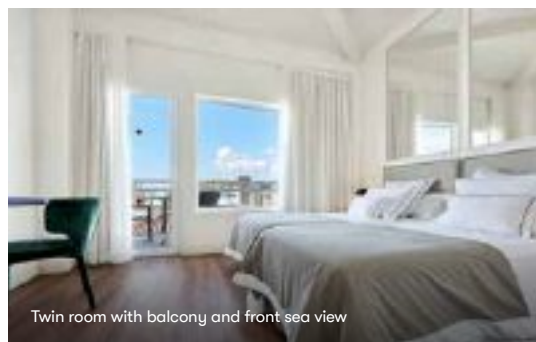
OFFERS AND SAVINGS

Please call us for honeymoon and complimentary extras, restrictions apply.

Holiday price band: £ up to £1500pp

Based on 7 nights' duration inclusive of return flights and private transfers (approximately 60 minutes from Palma airport), two adults sharing a lead-in room type on a lead-in board basis. Please refer to page 6 'Price points and star ratings'. For an accurate quote based on latest prices please call our travel experts on freephone 0800 008 7288.

We categorise our price bands into £, ££ and £££. They are intended only as a price guide where £ is up to £1500 per person, ££ is from £1501 to £3000 per person and £££ is over £3001 per person.



★★★★

ONLY ADULTS

Hoposa Hotel Daina

PUERTO POLLENSA

IDEALLY LOCATED

The Hoposa Hotel Daina is something of a landmark on the promenade in the attractive resort area of Puerto Pollensa. This modest seafront property offers views of the Sierra de Tramuntana mountains and the Bay of Pollensa.

Guest rooms offer a very comfortable standard of accommodation and breakfast can be enjoyed in the air-conditioned main restaurant.

The hotel's saltwater pool with solarium on the edge of the seafront features complimentary sun loungers and parasols providing welcome shade in the height of summer.

Hoposa Hotel Daina is ideally located to make the very most of the shops, restaurants and bars of Puerto de Pollensa. This hotel is exclusively for those aged 14 years or older.

FEATURES

67 rooms. Outdoor seawater pool. Restaurant, café offering light snacks and patio overlooking Paseo Marítimo.

OUR EXPERTS SUGGEST... The sea views

Upgrade to a front sea view room and enjoy the views over Pollensa bay and harbour from your balcony at this centrally located hotel.

OFFERS AND SAVINGS

Please call us for early booking offers and savings, honeymoon extras including a complimentary room upgrade, restrictions apply.

Holiday price band: £ up to £1500pp

Based on 7 nights' duration inclusive of return flights and private transfers (approximately 60 minutes from Palma airport), two adults sharing a lead-in room type on a lead-in board basis. Please refer to page 6 'Price points and star ratings'. For an accurate quote based on latest prices please call our travel experts on freephone 0800 008 7288.

We categorise our price bands into £, ££ and £££. They are intended only as a price guide where £ is up to £1500 per person, ££ is from £1501 to £3000 per person and £££ is over £3001 per person.



★★★★ superior

IDEAL FOR COUPLES

Hoposa Hotel Uyal

PUERTO POLLENSA

A TRADITIONAL HOTEL IN A POPULAR RESORT

In Puerto Pollensa, the charming Hoposa Hotel Uyal is ideal for those looking for a comfortable and typically traditional Mallorcan hotel. It is in a great location with an easy 800 metre walk to the town centre, with its many restaurants, pavement cafés and shops.

Hotel facilities include a spa, gym area and a swimming pool surrounded by a sun terrace, and a poolside bar serving snacks. Evenings can be pleasantly whiled away in the traditionally decorated dining room, or on the terrace, enjoying a drink and the splendid views of the bay.

Please note that there is the main hotel and a hotel annexe to the left of the main building, across a small side road and guest rooms may be allocated in either building. Rooms with double beds are available on request, subject to availability.

FEATURES

116 rooms and suites. Outdoor pool, spa and gym.
Restaurant, bar terrace serving snacks, lounge bar.

OUR EXPERTS SUGGEST... A dining upgrade

Choose the half board option and start the day with generous breakfast offerings and show cooking and in the evening dine on tasty international and local dishes in the elegant main restaurant, or al fresco on the terrace with sea views.

OFFERS AND SAVINGS

Please call us for early booking offers and savings, dining upgrades and honeymoon extras including a complimentary room upgrade, restrictions apply.

Holiday price band: £ up to £1500pp

Based on 7 nights' duration inclusive of return flights and private transfers (approximately 60 minutes from Palma airport), two adults sharing a lead-in room type on a lead-in board basis. Please refer to page 6 'Price points and star ratings'. For an accurate quote based on latest prices please call our travel experts on freephone 0800 008 7288.

We categorise our price bands into £, ££ and £££.
They are intended only as a price guide where £ is up to £1500 per person, ££ is from £1501 to £3000 per person and £££ is over £3001 per person.



★★★★★

Zafiro Palace Alcudia

PUERTO DE ALCUDIA

ALL SUITE HOTEL WITH EXCELLENT FACILITIES

Zafiro Palace Alcudia is located 400 metres from the beach in Puerto de Alcudia and will appeal to families in search of spacious and well-appointed accommodation and a good range of leisure amenities. Tastefully furnished junior suites and suites are spacious, with swim-up rooms highly recommended. Dining choices include a main restaurant, four a la carte restaurants as well as a restaurant serving light lunches.

Guests can choose to spend lazy, languid days around the vast pool landscape, or join in with a host of daytime activities, make the most of the multi-sports court and fitness room, or for a spot of pampering, the spa provides a full menu of massage treatments as well as a sauna, jacuzzi, Turkish bath, and an indoor pool.

For children there is a splash pool with pirate ship and water slides, mini club, playground and a special dinner menu.

YOUR ROOM OPTIONS

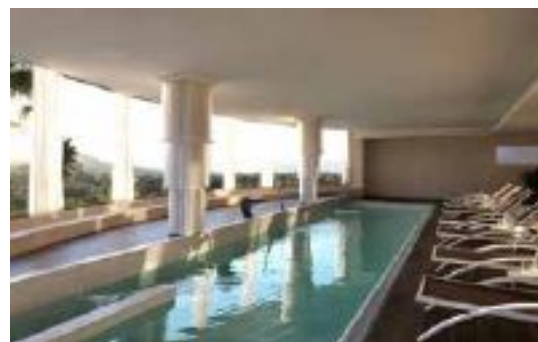
Swim-up junior suite One bedroom ground floor junior suites boast a private garden with Bali bed and direct access to shared pool.

Zafiro penthouse suite The exclusive penthouse suites with a kitchenette and sitting area offer the luxury of a private terrace with Bali bed and jacuzzi, accessed via a private stairway.

Family suite Sleeping up to six guests these are ideal for large families or groups and comprise two bedrooms, a separate lounge, a kitchenette and furnished balcony or terrace.



Swim-up junior suite



Junior suite

IDEAL FOR FAMILIES
OPTIONAL ALL INCLUSIVE

FEATURES

369 suites. Outdoor swimming pools, children's splash pool, indoor pool. Spa with massages, sauna, jacuzzi, Turkish bath. Multi-sports court, table tennis, fitness room. Main restaurant, four a la carte restaurants, lunch restaurant, café, pool bar. Children's club, playground and children's menu.

OFFERS AND SAVINGS

Please call us for early booking and long stay offers, all inclusive upgrades and honeymoon extras including a complimentary room upgrade, restrictions apply.

Holiday price band: £ up to £1500pp

Based on 7 nights' duration inclusive of return flights and private transfers (approximately 60 minutes from Palma airport), two adults sharing a lead-in room type on a lead-in board basis. Please refer to page 6 'Price points and star ratings'. For an accurate quote based on latest prices please call our travel experts on freephone 0800 008 7288.

We categorise our price bands into £, ££ and £££. They are intended only as a price guide where £ is up to £1500 per person, ££ is from £1501 to £3000 per person and £££ is over £3001 per person.

OUR EXPERTS SUGGEST... Choosing the all inclusive option

Book the all inclusive option for a hassle free family holiday. Enjoy a selection of drinks, snacks, full board meals, with the option of an a la carte dinner once per week in each of the hotel's four themed restaurants.





Suite with rooftop terrace



Superior room with French balcony

★★★★★

NEW TO CLASSIC

Bordoy Alcudia Port Suites

PUERTO DE ALCUDIA

CONTEMPORARY CHIC NEAR THE BEACH

Located a few minutes' walk from the beach and with a selection of bars and restaurants within the vicinity and the town centre of Alcudia 1.5km away, modern Bordoy Alcudia Port Suites is a chic boutique style hotel offering friendly and efficient service.

Interiors are contemporary and guest rooms and suites are decorated in a Nordic style with the emphasis on stylish functionality.

The a la carte restaurant with outdoor seating area offers an international menu and a breakfast buffet celebrating the finest produce of the island. The large sundeck and outdoor swimming pool is perfect for days in the sun, or alternatively there is a sandy beach with watersports for hire around 100 metres away. In addition, the hotel's spa offers a variety of relaxing massage treatments, a hydromassage bath, sauna and Turkish bath.

FEATURES

66 rooms and suites. Outdoor pool. Two restaurants, two bars. Spa with sauna, hammam, salt wall, hot tub, fitness room.

OUR EXPERTS SUGGEST...

A rooftop setting

Book a stylish suite on the rooftop with a king size bedroom and a comfortable living area separated by folding doors, and an en-suite bathroom with bath and separate shower. A balcony offers partial sea view.

OFFERS AND SAVINGS

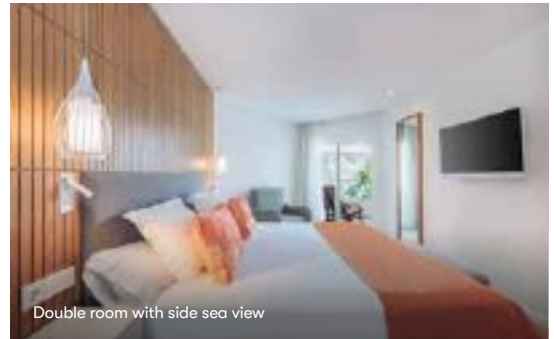
Please call us for offers and savings.

Holiday price band: £ up to £1500pp

Based on 7 nights' duration inclusive of return flights and private transfers (approximately 60 minutes from Palma airport), two adults sharing a lead-in room type on a lead-in board basis. Please refer to page 6 'Price points and star ratings'. For an accurate quote based on latest prices please call our travel experts on freephone 0800 008 7288.

We categorise our price bands into £, ££ and £££.

They are intended only as a price guide where £ is up to £1500 per person, ££ is from £1501 to £3000 per person and £££ is over £3001 per person.



★★★★

Iberostar Playa de Muro

PLAYA DE MURO

BEACHFRONT LOCATION AND SUPERB AMENITIES

Located by the wide sandy Muro beach in Alcudia Bay, the modern four star Iberostar Playa de Muro offers excellent amenities, high standards and attentive service. Comfortable guest rooms and suites feature furnished balcony and various views; family rooms additionally have a kitchenette and sitting area.

Dining choices include the Tramuntana Restaurant for breakfast and evening meals, the seasonal Food Truck for daytime snacks and the seasonal Dunas beach restaurant for lunch time specialities.

There's a superb range of land and water-based sports available and cyclists are particularly well catered for with bike rental, guided tours, sports masseurs and a specialist bike store. For lazy days the meandering pool landscape, or the indulgent spa, is perfect, children will enjoy the aqua fun area and clubs, and there is entertainment with live music and shows each evening.

FEATURES

446 rooms and suites. Outdoor pool, two children's pools. Indoor pool; children access 7am-3pm. Spa Sensations with treatments, sauna, whirlpool, Turkish bath. Fit & Fun activity programme. Main restaurant, gourmet restaurant, seasonal beachfront restaurant. Three bars. Children, junior and teen clubs, seasonal.

ECO LUXURY
IDEAL FOR FAMILIES
OPTIONAL ALL INCLUSIVE

OUR EXPERTS SUGGEST... The optional all inclusive

For an easy family stay choose the all inclusive option and enjoy breakfast, lunch and dinner in the main restaurant, snacks from the snack bar, plenty of ice cream, and local brand drinks.

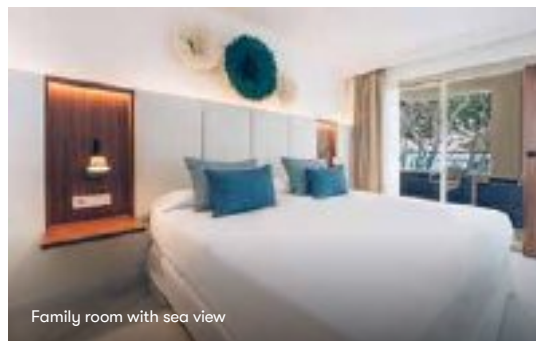
OFFERS AND SAVINGS

Please call us for early booking and long stay offers, all inclusive upgrades and honeymoon extras including a complimentary room upgrade, restrictions apply.

Holiday price band: £ up to £1500pp

Based on 7 nights' duration inclusive of return flights and private transfers (approximately 60 minutes from Palma airport), two adults sharing a lead-in room type on a lead-in board basis. Please refer to page 6 'Price points and star ratings'. For an accurate quote based on latest prices please call our travel experts on freephone 0800 008 7288

We categorise our price bands into £, ££ and £££. They are intended only as a price guide where £ is up to £1500 per person, ££ is from £1501 to £3000 per person and £££ is over £3001 per person.



Family room with sea view

★★★★★

ECO LUXURY
OPTIONAL ALL INCLUSIVE

Iberostar Selection Playa de Muro Village

PLAYA DE MURO

PRIME POSITION IN ALCUDIA BAY

Surrounded by pine forests and directly in front of a wide sandy beach, Iberostar Selection Playa de Muro Village enjoys a prime beachfront location in Alcudia Bay, with a selection of shops, bars and restaurants just 200 metres away. S'Albufera Natural Park is nearby, and there's a regular bus service for the 5km journey to Puerto de Alcudia. Leisure facilities include a swimming pool with sun terraces set in extensive gardens.

The well-equipped guest rooms, suites and family suites are spacious, modern and minimalist; family rooms with pool view are highly recommended. Dining options include a main restaurant and an American themed burger bar.

Shared with Iberostar Playa de Muro, there's a wide range of sports facilities, daytime activities and evening entertainment, and for children, there's a separate pool, aqua fun area and clubs.

FEATURES

202 rooms and suites. Two outdoor pools, children's pool, Aqua fun. Indoor pool; children access 7am-3pm. Spa Sensations, fitness room, jacuzzi, massage, sauna. Numerous restaurants, bars, beach bars and café. Children's Monkey Camp from four to seven years. Children's Dolphin, eight to 12 years, and Eagle Club, 13 to 17 years in Iberostar Playa de Muro in high season.

OUR EXPERTS SUGGEST... Going for the all inclusive option

For an easy family stay we recommend booking the all inclusive option and enjoy outstanding full board meals, refreshing drinks any time of the day, and the children are sure to appreciate the ice cream on offer.

OFFERS AND SAVINGS

Please call us for early booking and long stay offers, all inclusive upgrades and honeymoon extras including a complimentary room upgrade, restrictions apply.

Holiday price band: £ up to £1500pp

Based on 7 nights' duration inclusive of return flights and private transfers (approximately 60 minutes from Palma airport), two adults sharing a lead-in room type on a lead-in board basis. Please refer to page 6 'Price points and star ratings'. For an accurate quote based on latest prices please call our travel experts on freephone 0800 008 7288.

We categorise our price bands into £, ££ and £££. They are intended only as a price guide where £ is up to £1500 per person, ££ is from £1501 to £3000 per person and £££ is over £3001 per person.



Double room with sea view

★★★★★

IDEAL FOR FAMILIES

Grupotel Parc Natural & Spa

PLAYA DE MURO

IDYLIC SETTING IN ALCUDIA BAY

Grupotel Parc Natural & Spa enjoys a prime position on the beautiful white sandy beach of Playa de Muro in Alcudia Bay, with the S'Albufera Natural Park nestling behind. Well-tended gardens surround the hotel and pool area, and guest rooms and suites are spacious and comfortably furnished with all the amenities expected of a five star property.

Dining options include the elegant Restaurant Paraiso for sumptuous breakfasts and delicious evening meals, whilst the a la carte Mar Blau Bistro offers light Mediterranean lunches.

The area boasts some of the best cycle routes in Mallorca and the hotel staff are happy to arrange bicycle hire and tours. A state of the art spa offers an array of treatments and facilities including an indoor pool, and for children, there's a playground on the beach, gently shelving waters and a club in high season.

FEATURES

142 rooms and suites. Outdoor pool, children's pool. Spa & wellness centre, indoor pool, jacuzzi, thermal baths, sauna, Turkish bath, Laconium, treatment rooms and fitness studio. Table tennis, beach volleyball, bicycle hire and tours. Two restaurants, bar. Evening entertainment. Children's club in high season from four years, playroom, beach playground, babysitting service.

OUR EXPERTS SUGGEST... Added space

Book a suite for generous and elegant space with a bedroom and a separate living room with sofa bed, two bathrooms and a furnished terrace or balcony with splendid views of the Mediterranean.

OFFERS AND SAVINGS

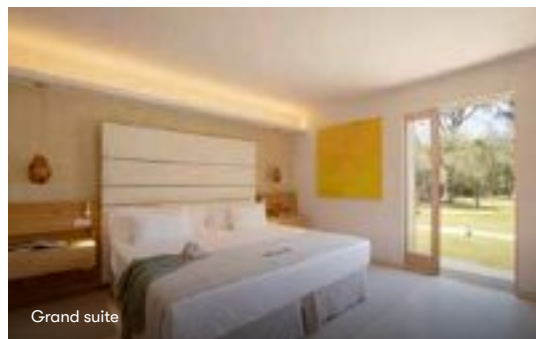
Please call us for early booking offers and savings, dining upgrades and complimentary extras, restrictions apply.

Holiday price band: £ up to £1500pp

Based on 7 nights' duration inclusive of return flights and private transfers (approximately 60 minutes from Palma airport), two adults sharing a lead-in room type on a lead-in board basis. Please refer to page 6 'Price points and star ratings'. For an accurate quote based on latest prices please call our travel experts on freephone 0800 008 7288.

We categorise our price bands into £, ££ and £££.

They are intended only as a price guide where £ is up to £1500 per person, ££ is from £1501 to £3000 per person and £££ is over £3001 per person.



★★★★★ boutique

Hotel Can Simoneta

CANYAMEL

A ROMANTIC CLIFFTOP RETREAT

Dramatically set on the clifftop on the northeast coast and enjoying stunning views of the Bay of Canyamel, the adult only Hotel Can Simoneta is ideal for a romantic break. It comprises three historic buildings set amidst woodland, lush gardens and immaculate lawns. The service is friendly and attentive, the setting elegant and tranquil and the views are breathtaking.

Individually designed guest rooms and suites in neutral colours invite to rest and relaxation. The garden is the setting for two outdoor pools, one heated, access to an exclusive, secluded cove and the sea is via a flight of cliffside stairs and the on-site spa proposes a range of well-being treatments.

Delectable Mediterranean cuisine with a Mexican influence is presented at the fine restaurant, where guests can dine on the terrace with spectacular views of the bay. The hotel is close to the Llevant nature reserve and a ten minute drive from four of the best golf courses on the island, with a tennis club and access to a selection of waterports nearby. This hotel is exclusively for adults aged 18 years or older.

FEATURES

26 rooms and suites. Two outdoor pools, one heated. Restaurant, bar. Wellness centre, gym. Bicycles.

ONLY ADULTS
NEW TO CLASSIC
GOOD FOR GOLF
LUXURY BOUTIQUE

OUR EXPERTS SUGGEST...

A sea view

We highly recommend a sea view room or suite, including the junior suites, and superior and luxury suites that all come with a terrace or chill out area. The grand suite directly facing the sea boasts its own private swimming pool, terrace and garden.

OFFERS AND SAVINGS

Please call us for offers and savings.

Holiday price band: £ up to £1500pp

Based on 7 nights' duration inclusive of return flights and private transfers (approximately 70 minutes from Palma airport), two adults sharing a lead-in room type on a lead-in board basis. Please refer to page 6 'Price points and star ratings'. For an accurate quote based on latest prices please call our travel experts on freephone 0800 008 7288.

We categorise our price bands into £, ££ and £££.

They are intended only as a price guide where £ is up to £1500 per person, ££ is from £1501 to £3000 per person and £££ is over £3001 per person.



Superior suite

★★★★★ boutique

Pleta de Mar, Luxury Hotel by Nature

CANYAMEL

BEAUTIFUL RETREAT IN SPLENDID LOCATION

Surrounded by fragrant pines and olive trees and with stunning views over the sea on the island's northeast coast, Pleta de Mar is a superbly sophisticated and luxurious retreat aimed exclusively at adults. Each of its contemporary, single-storey suites are stylishly appointed, feature a private terrace and outdoor rain shower, and some, glorious sea views.

Breakfast is served buffet style, and for an unforgettable gastronomic experience visit the Sa Pleta restaurant where renowned chef Marc Fosh uses open-fire cooking to create exquisite dishes with unique flavours.

The extensive and mature gardens invite to rest and relaxation, there are two outdoor infinity pools, with a further outdoor heated pool at the wellness centre, where the spa provides a tranquil spot for pampering treatments. The hotel enjoys exclusive access to the small, sheltered Cova dels Albardans beach, there are tennis courts nearby, complimentary use of bicycles and four excellent golf courses within a ten minute drive. This hotel is exclusively for adults aged 18 years or older.

FEATURES

30 suites. Two outdoor pools. Restaurant and bar. Wellness centre with outdoor heated pool, Turkish bath, sauna. Pilates, yoga. Outdoor gym.

ONLY ADULTS
NEW TO CLASSIC
GOOD FOR GOLF
LUXURY BOUTIQUE

OUR EXPERTS SUGGEST...

A grand stay

For ample space and privacy, the grand suite has a separate living room, outdoor rain shower, its own secluded garden and terrace with swimming pool and sea views.

OFFERS AND SAVINGS

Please call us for offers and savings.

Holiday price band: £ up to £1500pp

Based on 7 nights' duration inclusive of return flights and private transfers (approximately 70 minutes from Palma airport), two adults sharing a lead-in room type on a lead-in board basis. Please refer to page 6 'Price points and star ratings'. For an accurate quote based on latest prices please call our travel experts on freephone 0800 008 7288.

We categorise our price bands into £, ££ and £££.

They are intended only as a price guide where £ is up to £1500 per person, ££ is from £1501 to £3000 per person and £££ is over £3001 per person.



Twin room with side sea view

★★★★

ONLY ADULTS

Hotel Cala d'Or

CALA D'OR

IDEAL CHOICE FOR RELAXATION

The beachside Hotel Cala d'Or hotel nestles amongst pine trees in the resort of Cala d'Or offering access to no fewer than seven beaches. Originally built in 1932 by a Belgian visitor who fell in love with the beauty of the area, this popular property combines all the luxuries of a modern hotel with the charms imposed by years of restoration, and provides the perfect place to unwind.

Simply relaxing by the pool or strolling to the beach tends to be the order of each day. Delightful evenings can be whiled away enjoying the spectacular sea views from the hotel's dining terrace, or slightly more active guests will enjoy strolling through the delightful village of Cala d'Or, a former fishing village which now boasts a plethora of sparkling white buildings, pedestrianised walkways and a delightful yachting marina.

The Hotel Cala d'Or has a number of external steps and therefore may not be suitable for those with walking difficulties. This hotel is exclusively for adults aged 16 years or older.

FEATURES

95 rooms. Outdoor swimming pool and sun terrace. Restaurant, pool bar and beach bar weather permitting. Regular evening entertainment.

OUR EXPERTS SUGGEST...

A dining upgrade

Choose the half board option and savour a daily three course menu with a choice of dishes for each course. Once a week swap your evening meal in the main restaurant for a three course a la carte dinner at the waterfront Eco Beach Restaurant, subject to availability.

OFFERS AND SAVINGS

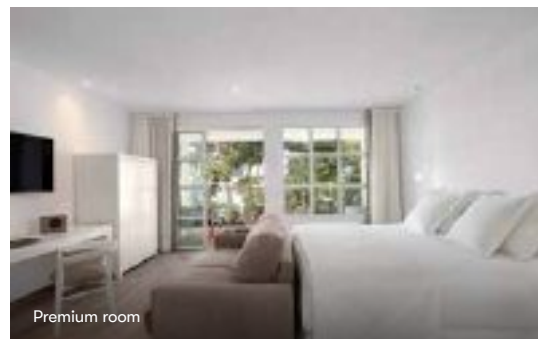
Please call us for early booking and free night offers, dining upgrades, complimentary extras and honeymoon extras including a complimentary room upgrade, restrictions apply.

Holiday price band: £ up to £1500pp

Based on 7 nights' duration inclusive of return flights and private transfers (approximately 60 minutes from Palma airport), two adults sharing a lead-in room type on a lead-in board basis. Please refer to page 6 'Price points and star ratings'. For an accurate quote based on latest prices please call our travel experts on freephone 0800 008 7288.

We categorise our price bands into £, ££ and £££.

They are intended only as a price guide where £ is up to £1500 per person, ££ is from £1501 to £3000 per person and £££ is over £3001 per person.



★★★★★ boutique

LUXURY BOUTIQUE

Melia Cala d'Or Boutique Hotel

CALA D'OR

PEACEFUL AND RELAXING ATMOSPHERE AWAITS

Set in the peaceful and relaxing atmosphere of beautiful and extensive Mediterranean gardens, the charming Melia Cala d'Or Boutique Hotel comprises four separate buildings. Classic and premium rooms are furnished in elegant Mallorcan style and luxurious junior and grand suites feature a living area, kitchen facilities and bathroom with hydro-massage.

There is an outdoor pool, an indoor pool and a small spa with a fitness centre. Two restaurants include Sa Pastera by the poolside and Es Llaut, which has gained an enviable reputation for its Spanish and international dishes.

This intimate boutique hotel is just a short stroll from the centre of Cala d'Or with its delightful white buildings, pedestrianised lanes and yachting marina, and enjoys easy access to the numerous beaches and bays which fringe the surrounding pine forests. The closest beach is Cala Gran, just 250 metres across the road from the hotel.

FEATURES

55 rooms and suites. Outdoor swimming pool, indoor pool and jacuzzi. Spa area with fitness room, sauna, steam bath and massages. Table tennis. Main restaurant, poolside restaurant, bar, poolside bar. Children's playground.

OUR EXPERTS SUGGEST... A dining upgrade

Opt for the half board and you can enjoy a generous breakfast each morning and a waiter served evening meal from a daily changing menu of international and Mediterranean dishes.

OFFERS AND SAVINGS

Please call us for early booking offers and savings, dining upgrades and honeymoon extras including a complimentary room upgrade, restrictions apply.

Holiday price band: £ up to £1500pp

Based on 7 nights' duration inclusive of return flights and private transfers (approximately 60 minutes from Palma airport), two adults sharing a lead-in room type on a lead-in board basis. Please refer to page 6 'Price points and star ratings'. For an accurate quote based on latest prices please call our travel experts on freephone 0800 008 7288.

We categorise our price bands into £, ££ and £££. They are intended only as a price guide where £ is up to £1500 per person, ££ is from £1501 to £3000 per person and £££ is over £3001 per person.



★★★★

IDEAL FOR COUPLES

Hotel Honucai

COLONIA DE SANT JORDI

GREAT SEAFRONT LOCATION

In a prime seafront location in Colonia de Sant Jordi, a former fishing village in the south east of the island, Hotel Honucai enjoys direct access to the sea and boasts panoramic views over Es Dolc and Es Carbo beaches.

Bright and airy with a Mediterranean influenced décor guest rooms and suites feature balcony and modern amenities. An ample breakfast is served each morning and an à la carte menu is available at restaurant Salicornia where the cuisine is inspired by traditional, local recipes with a contemporary flair and guest can choose to dine on the terrace right on the seafront promenade to make the most of the setting.

The rooftop terrace offering fabulous views of the sea and harbour is the setting for the bijou outdoor pool and bar, with DJ sessions and live bands providing entertainment some evenings. In addition there is a spa facility with sauna, jacuzzi and chromotherapy shower, and there is also a gym, yoga and kayaks for guests' use. This hotel is not recommended for children under 12 years.

FEATURES

78 rooms and suites. Outdoor pool. Spa. Gym, yoga, kayaks. Restaurant, rooftop bar, poolside bar.

OUR EXPERTS SUGGEST... A sea view

Fresh and airy superior rooms feature a balcony with views of the Mediterranean, tea and coffee facilities for your convenience and bathroom with shower or a bath.

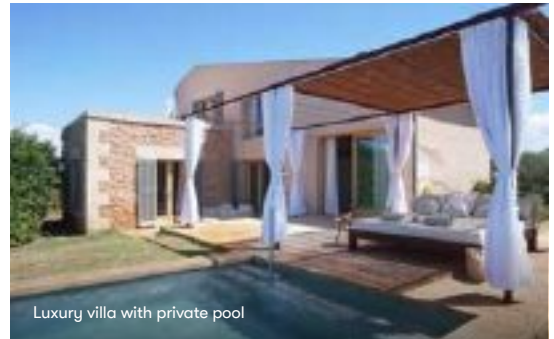
OFFERS AND SAVINGS

Please call us for early booking offers and dining upgrades, restrictions apply.

Holiday price band: £ up to £1500pp

Based on 7 nights' duration inclusive of return flights and private transfers (approximately 50 minutes from Palma airport), two adults sharing a lead-in room type on a lead-in board basis. Please refer to page 6 'Price points and star ratings'. For an accurate quote based on latest prices please call our travel experts on freephone 0800 008 7288.

We categorise our price bands into £, ££ and £££. They are intended only as a price guide where £ is up to £1500 per person, ££ is from £1501 to £3000 per person and £££ is over £3001 per person.



Luxury villa with private pool

★★★★★ boutique

Fontsanta Hotel Thermal Spa & Wellness

COLONIA DE SANT JORDI

A LUXURIOUS SANCTUARY

In a rural setting in the southeast of Mallorca with the natural salt marshes of Es Salobrar on the doorstep, the adult only Fontsanta Hotel Thermal Spa & Wellness occupies a former 19th century public thermal spa which has been beautifully transformed into a contemporary and sophisticated boutique hotel with its interior a wonderful blend of traditional and modern elements. Individually styled rooms and suites feature private courtyard or terrace.

Surrounded by immaculate gardens of well-manicured lawns, Mediterranean plants and striking artwork, the atmosphere is tranquil and peaceful and perfect for unwinding in style. Set in the gardens are two outdoor pools and four jacuzzis, and the fine white sand beach of Es Trenc can be reached by shuttle service in high season.

Exquisite Mediterranean cuisine is presented at gourmet Fontsanta restaurant where guests can dine on the terrace overlooking the manicured gardens. The jewel in the crown is the hotel's unique thermal spa complete with a pool, thermal baths and jacuzzis. This hotel is exclusively for adults aged 18 years or older.

FEATURES

37 rooms and suites. Two outdoor pools, four jacuzzis. Restaurant, bar. Thermal spa, gym. Bicycle hire.

ONLY ADULTS
NEW TO CLASSIC
LUXURY BOUTIQUE
RECOMMENDED SPA

OUR EXPERTS SUGGEST... A spa day

The hotel's serene spa features the only natural thermal spring in the Balearics and its mineral-rich waters rise from underground aquifers at 38 °C. Indulge in a signature treatment and make the most of the thermal pool with jets, individual thermal baths and jacuzzis, sauna, steam room, ice fountain and sensation showers.

OFFERS AND SAVINGS

Please call us for offers and savings.

Holiday price band: £ up to £1500pp

Based on 7 nights' duration inclusive of return flights and private transfers (approximately 45 minutes from Palma airport), two adults sharing a lead-in room type on a lead-in board basis. Please refer to page 6 'Price points and star ratings'. For an accurate quote based on latest prices please call our travel experts on freephone 0800 008 7288.

We categorise our price bands into £, ££ and £££.

They are intended only as a price guide where £ is up to £1500 per person, ££ is from £1501 to £3000 per person and £££ is over £3001 per person.



Countryside superior

★★★★★

OPTIONAL ALL INCLUSIVE

Zoetry Heritage Mallorca

LLUCMAJOR

CONTEMPORARY MEETS TRADITION

Surrounded by beautiful Mallorcan countryside close to the village of Llucmajor, Zoetry Heritage Mallorca is just a short 10 minute drive from a sandy beach. With an impressive 14th century tower at its heart, this luxurious property has been cleverly restored to retain the style of a traditional Mallorcan finca.

Guest rooms and suites are located in the historical finca or in low level buildings in the extensive grounds; all furnished to high standards in contemporary or classical style.

The hotel's S'Arxiduc Restaurant offers freshly prepared Mediterranean cuisine for lunch and dinner and the bar, Sa Clastra, is perfect for evening cocktails and champagne.

There is an outdoor family pool with a children's section as well as an adult only relaxation pool, with a pool bar serving light bar snacks. The serene spa with a water and thermal circuit offers a range of exclusive treatments, whilst tennis courts, a gym and bicycle hire should please those seeking more active pursuits. Car hire recommended.

FEATURES

90 rooms and suites. Two outdoor swimming pools. Pure Spa with treatments, indoor pool, steam room, sauna, ice fountain, sensation shower. Fitness centre. Two floodlit tennis courts, bicycle hire. Restaurant, bar, pool bar.

OUR EXPERTS SUGGEST... A dining upgrade

Choose the Unlimited Experience and you can enjoy unlimited gourmet à la carte dining options, international and domestic spirits, natural fruit juices and soft drinks. Daily refreshed minibar with soft drinks, juice, bottled water and beer.

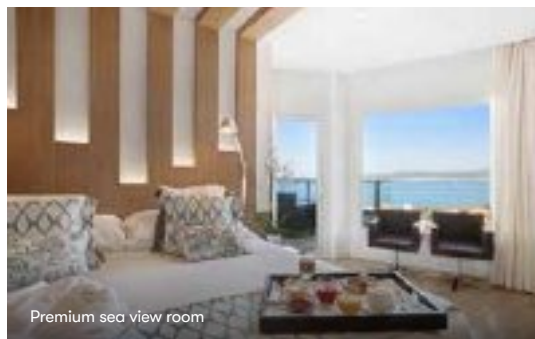
OFFERS AND SAVINGS

Please call us for early booking offers, dining upgrades and optional all inclusive details.

Holiday price band: £ up to £1500pp

Based on 7 nights' duration inclusive of return flights and private transfers (approximately 25 minutes from Palma airport), two adults sharing a lead-in room type on a lead-in board basis. Please refer to page 6 'Price points and star ratings'. For an accurate quote based on latest prices please call our travel experts on freephone 0800 008 7288.

We categorise our price bands into £, ££ and £££. They are intended only as a price guide where £ is up to £1500 per person, ££ is from £1501 to £3000 per person and £££ is over £3001 per person.



★★★★ superior

ONLY ADULTS
RECOMMENDED SPA

Pure Salt Garonda

PLAYA DE PALMA

CHIC AND RELAXED SEAFRONT HOTEL

Located on the seafront in Playa de Palma and enjoying direct access to the beach, chic Pure Salt Garonda is an adult exclusive property offering attentive service, delectable dining and a tranquil, relaxed atmosphere.

Spacious, modern and attractively styled guest rooms and suites include rooms with garden or sea view and suites with terrace and open air jacuzzi. The restaurant serves a varied breakfast and an a la carte menu for dinner, the acclaimed Mikel & Pintxo, set on the seafront promenade and boasting great sea views, offers delicious tapas.

The outdoor pool area is a lovely spot for lazy days in the sunshine and the spa features an indoor heated pool and jacuzzi, Turkish bath and sauna. Guests can join in early morning yoga classes on the beach twice a week and there is a gym for the more active. This hotel is exclusively for adults aged 18 years or older.

FEATURES

149 rooms and junior suites. Outdoor swimming pool. Spa centre with treatments, sauna, Turkish bath, jacuzzi, indoor heated pool. Fitness room. Main restaurant, tapas restaurant, Italian restaurant.

OUR EXPERTS SUGGEST... A stylish stay

Choose a modern, stylish and open plan junior suite for a comfortable space with large bed and a sitting area. Relax in the in-room jacuzzi in front of the furnished terrace looking out towards the sea.

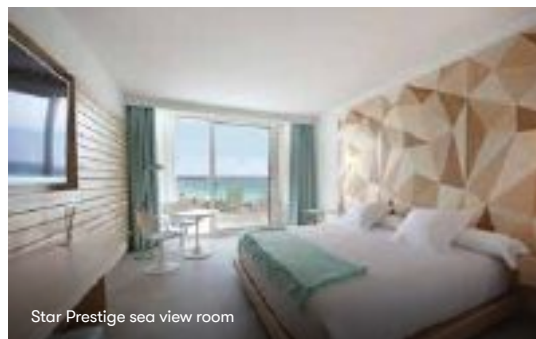
OFFERS AND SAVINGS

Please call us for early booking and long stay offers, dining upgrades and honeymoon extras including a complimentary room upgrade, restrictions apply.

Holiday price band: £ up to £1500pp

Based on 7 nights' duration inclusive of return flights and private transfers (approximately 15 minutes from Palma airport), two adults sharing a lead-in room type on a lead-in board basis. Please refer to page 6 'Price points and star ratings'. For an accurate quote based on latest prices please call our travel experts on freephone 0800 008 7288.

We categorise our price bands into £, ££ and £££. They are intended only as a price guide where £ is up to £1500 per person, ££ is from £1501 to £3000 per person and £££ is over £3001 per person.



★★★★★

Iberostar Selection Playa de Palma

PLAYA DE PALMA

MODERN RESORT HOTEL IN PRIME LOCATION

Five star Iberostar Selection Playa de Palma boasts a privileged beachfront location in the resort centre of Playa de Palma and offers a high standard of accommodation, a great range of facilities and a sophisticated ambience.

The stylish and modern guest rooms are bright and airy, feature balcony or terrace and enjoy various views. Star Prestige rooms, on the upper floors offer access to a rooftop solarium with infinity plunge pool, and a private lounge with refreshments.

A sumptuous breakfast, lunch and dinner with show cooking is served in the Playa Blanca restaurant, or for light meals and snacks during the day, the poolside bar.

The beach is just across the seafront promenade, and the spa has a range of treatments to enjoy.

FEATURES

182 rooms and junior suites. Outdoor pool. Spa Sensations, jacuzzi, sauna. Fitness room, spinning. Main restaurant, bar, seasonal pool bar and champagne bar.

ECO LUXURY
RECOMMENDED SPA

OUR EXPERTS SUGGEST... Booking a Star Prestige room

The exclusive Star Prestige rooms for adults include access to the chill out terrace and rooftop infinity plunge pool, drinks service 10am-6pm, discount on spa treatments, and a tasting menu in the Marea Restaurant for stays of five nights or more, excluding drinks.

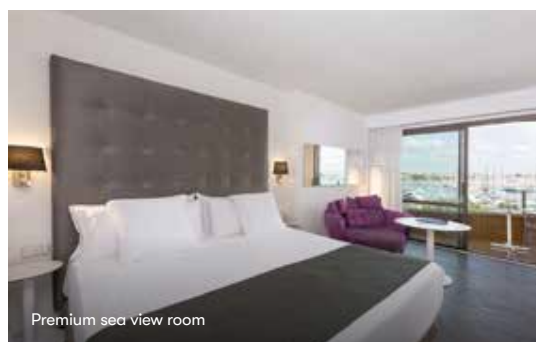
OFFERS AND SAVINGS

Please call us for early booking and long stay offers, dining upgrades and honeymoon extras including a complimentary room upgrade, restrictions apply.

Holiday price band: £ up to £1500pp

Based on 7 nights' duration inclusive of return flights and private transfers (approximately 15 minutes from Palma airport), two adults sharing a lead-in room type on a lead-in board basis. Please refer to page 6 'Price points and star ratings'. For an accurate quote based on latest prices please call our travel experts on freephone 0800 008 7288.

We categorise our price bands into £, ££ and £££. They are intended only as a price guide where £ is up to £1500 per person, ££ is from £1501 to £3000 per person and £££ is over £3001 per person.



Premium sea view room

★★★★

RECOMMENDED SPA

Melia Palma Marina

PALMA

SPLENDID PANORAMIC VIEWS OF PALMA BAY

Melia Palma Marina enjoys a magnificent location in Palma alongside the seafront promenade and with splendid views of Palma Bay. Directly opposite the marina, a short distance from Bellver Castle, and just a twenty-five minute walk from the historical heart of the city, the hotel is located in one of the most prestigious areas of the city.

Contemporary style guests rooms are comfortably furnished and equipped with modern amenities. The hotel's a la carte restaurant Arado features a menu of traditional flavours combined with modern flair, Moss specialises in healthy and innovative cuisine and Arado cocktail bar tempts with a selection of tapas.

In summer enjoy the sun with a refreshing food and beverage menu served at the pool bar while admiring the views over Palma Bay from the spacious terrace. The hotel's well-equipped spa allows guests to discover the benefits of various treatments and massages whilst enjoying the sauna, steam bath and pool.

FEATURES

342 rooms. Outdoor pool. YHI Spa with treatments, steam bath, sauna, hydrothermal circuit, pool, gym. Two restaurants, bar, pool bar.

OUR EXPERTS SUGGEST... The Level

Reserve The Level premium room with sea view and enjoy upgraded room amenities, turndown service, access to the Level Lounge with breakfast, snacks, tapas and premium drinks and one complimentary access per adult to the water circuit at YHI Spa.

OFFERS AND SAVINGS

Please call us for early booking and free night offers, dining upgrades and honeymoon extras including a complimentary room upgrade, restrictions apply.

Holiday price band: £ up to £1500pp

Based on 4 nights' duration inclusive of return flights and private transfers (approximately 20 minutes from Palma airport), two adults sharing a lead-in room type on a lead-in board basis. Please refer to page 6 'Price points and star ratings'. For an accurate quote based on latest prices please call our travel experts on freephone 0800 008 7288.

We categorise our price bands into £, ££ and £££. They are intended only as a price guide where £ is up to £1500 per person, ££ is from £1501 to £3000 per person and £££ is over £3001 per person.



Classic room

★★★★★

IDEAL FOR COUPLES

Hotel Victoria Gran Melia

PALMA

A GREAT REPUTATION IN A PRIVILEGED LOCATION

The well-established Hotel Victoria Gran Melia overlooking the Bay of Palma offers the highest standards of comfort and personal service and has long been favoured by British clients.

Its classically elegant décor is complemented by the most up-to-date amenities and facilities and it is very conveniently located on the Paseo Marítimo just minutes from the lively centre of Palma with easy access to the Gothic quarter and its amazing cathedral. The nearest sandy beach is 3km away.

The hotel enjoys a fine reputation for excellent cuisine with its famous breakfasts and evening dining at the a la carte IKATZA Restaurant, one of the very few Basque grill restaurants. A pre-dinner aperitif or cocktail is the perfect way to enjoy a Mallorcan sunset from the terrace.

FEATURES

171 rooms and suites. Outdoor swimming pool with sun terrace and indoor heated swimming pool. Fitness room and massage. A la carte Basque grill restaurant, pool snack bar. Terrace overlooking Palma Bay.

OUR EXPERTS SUGGEST... Red Level rooms

Book a Red Level room with sea views and benefit from access to exclusive areas of the hotel including the Level Lounge with canapés, tea and coffee served throughout the day and snacks and open bar early evening.

OFFERS AND SAVINGS

Please call us for early booking and long stay offers, dining upgrades and honeymoon extras including a complimentary room upgrade, restrictions apply.

Holiday price band: £ up to £1500pp

Based on 4 nights' duration inclusive of return flights and private transfers (approximately 20 minutes from Palma airport), two adults sharing a lead-in room type on a lead-in board basis. Please refer to page 6 'Price points and star ratings'. For an accurate quote based on latest prices please call our travel experts on freephone 0800 008 7288.

We categorise our price bands into £, ££ and £££. They are intended only as a price guide where £ is up to £1500 per person, ££ is from £1501 to £3000 per person and £££ is over £3001 per person.



Premium sea view room

★★★★★

Es Princep

PALMA

STUNNING BAY VIEWS

In a peaceful location close to Palma's ancient city ramparts in the historic centre, Es Princep is a wonderful, small luxury hotel offering spectacular views of Palma Bay. This is a family run hotel with great service where guests are made to feel at home right from the start. Guest rooms and suites are elegantly styled, and some overlook the city walls and sea.

The Gremium bar serves well-crafted cocktails in a laid-back setting, and the hotel's fine dining Zaranda restaurant offers innovative haute cuisine paying homage to the island's culinary traditions in an intimate atmosphere. The vast Almaq rooftop terrace boasts fabulous vistas alongside an infinity pool, a well-stocked bar and casual dining.

The luxurious Coco Spa features a range of indulgent treatments, a sauna, Turkish bath, indoor pool and gym. A member of The Leading Hotels of the World.

FEATURES

68 rooms and suites. Rooftop infinity pool. Two restaurants. Spa.

IDEAL FOR COUPLES
RECOMMENDED SPA

OUR EXPERTS SUGGEST...

A sea view

Reserve a junior suite with fabulous sea views; located on the top floor of the hotel, they also overlook the historic city walls. Or opt for the exquisite signature Palma suite with a separate living room and views over the sparkling waters of Palma Bay.

OFFERS AND SAVINGS

Please call us for offers and savings.

Holiday price band: £ up to £1500pp

Based on 4 nights' duration inclusive of return flights and private transfers (approximately 20 minutes from Palma airport), two adults sharing a lead-in room type on a lead-in board basis. Please refer to page 6 'Price points and star ratings'. For an accurate quote based on latest prices please call our travel experts on freephone 0800 008 7288.

We categorise our price bands into £, ££ and £££.

They are intended only as a price guide where £ is up to £1500 per person, ££ is from £1501 to £3000 per person and £££ is over £3001 per person.



★★★★★ boutique

El Llorenc Parc de la Mar

PALMA

UNDERSTATED ELEGANCE AND FINE DINING

Enjoying a quiet location in the historic quarter of Calatrava, near the seafront and a five minute stroll from Palma Cathedral, El Llorenc Parc de la Mar is a luxurious boutique hotel with welcoming, personal service and award-winning dining. Whilst paying homage to Palma's Moorish past, the renowned Swedish designer Magnus Ehrland has created elegantly contemporary interiors with a warm, home from home ambience. Stylish guest rooms and suites tastefully blend classic and modern design.

An a la carte breakfast is served each morning and fine dining can be enjoyed at one Michelin star DINS Santi Taura. For something more casual visit Restaurant Urba for an excellent selection of dishes perfect for sharing.

The multi-terraced rooftop features Palma's longest infinity pool, a cocktail bar, and stunning panoramic views across the sea and surrounding area. The wellness centre includes a spa for massage and beauty treatments. This hotel is exclusively for adults aged 16 years or older.

FEATURES

33 rooms and suites. Rooftop pool and bar. Two restaurants, bar. Wellness studio with heated pool, gym, jacuzzi, sauna, ice fountain.

ONLY ADULTS
MICHELIN DINING
LUXURY BOUTIQUE
RECOMMENDED SPA

OUR EXPERTS SUGGEST... A dining experience

Reserve a table at Michelin star DINS Santi Taura and enjoy the divine Origens tasting menu comprising 11 steps, with the option of adding a further three courses and wine pairings. The menu is seasonal and inspired by the island's traditional cuisine.

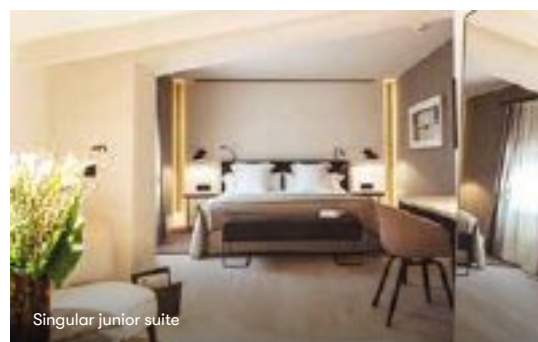
OFFERS AND SAVINGS

Please call us for offers and savings.

Holiday price band: £ up to £1500pp

Based on 4 nights' duration inclusive of return flights and private transfers (approximately 20 minutes from Palma airport), two adults sharing a lead-in room type on a lead-in board basis. Please refer to page 6 'Price points and star ratings'. For an accurate quote based on latest prices please call our travel experts on freephone 0800 008 7288.

We categorise our price bands into £, ££ and £££. They are intended only as a price guide where £ is up to £1500 per person, ££ is from £1501 to £3000 per person and £££ is over £3001 per person.



★★★★★ boutique

HOTEL LOYALTY
LUXURY BOUTIQUE

Sant Francesc Hotel Singular

PALMA

BEAUTIFUL HOTEL IN PALMA'S OLD TOWN

Opening up through vast wooden doors, echoing the feeling of entering a riad, the beautiful Sant Francesc Hotel Singular is a wonderful retreat in the heart of Palma's old town, right by the Sant Francesc Basilica and square.

This charming manor house dating back to the 19th century has been sensitively restored retaining its historic architectural features whilst introducing some modern design elements, and features a careful blend of antiques, design furniture and contemporary art. Guest rooms and suites are all individually sized, elegantly modern in style and decorated to the highest standard with meticulous attention to detail.

The bar offers an extensive list of cocktails and delicious tapas and the elegant restaurant serves a delightful buffet or a la carte breakfast, whilst evening dining is focused on local and Mediterranean dishes using seasonal ingredients. The rooftop terrace, with a pool and sun deck affords spectacular views, and in the evenings is the perfect setting for sipping aperitifs and watch the sun set over Palma.

FEATURES

42 rooms and suites. Rooftop terrace with outdoor pool. Wellness treatment rooms, 24-hour fitness room. Restaurant, lobby and patio bar, snack bar.

OUR EXPERTS SUGGEST... The very best

Choose to stay in a suite and experience the perfect combination of luxury, elegance and grandeur with original 19th century frescoed ceilings complemented by contemporary art and furnishings. Enjoy the open plan layout with king size bed and sitting area and two French balconies.

OFFERS AND SAVINGS

Please call us for early booking and free night offers, dining upgrades and honeymoon extras including a complimentary room upgrade, restrictions apply.

Holiday price band: £ up to £1500pp

Based on 4 nights' duration inclusive of return flights and private transfers (approximately 20 minutes from Palma airport), two adults sharing a lead-in room type on a lead-in board basis. Please refer to page 6 'Price points and star ratings'. For an accurate quote based on latest prices please call our travel experts on freephone 0800 008 7288.

We categorise our price bands into £, ££ and £££. They are intended only as a price guide where £ is up to £1500 per person, ££ is from £1501 to £3000 per person and £££ is over £3001 per person.



★★★★ boutique

BOUTIQUE STYLE

Santa Clara Urban Hotel & Spa

PALMA

A FUSION OF TRADITIONAL AND MODERN STYLES

Santa Clara Urban Hotel & Spa has been converted from an old merchant's house into a modern, minimalist space located in the historic old town of Palma. Set in the very heart of the capital, a selection of restaurants, stylish bars and designer shops abound within the immediate vicinity and the nearest sandy beach is a 15 minute walk away.

The inviting and light-filled guest rooms and suites are chic and contemporary. A particular highlight is the lovely roof terrace offering the perfect spot to enjoy a cocktail with wonderful views of the cathedral, harbour and old town, or simply lay back and relax on one of the sunbeds. There's also a bijou spa with a variety of massages and beauty treatments.

FEATURES

20 rooms and suites. Spa with a variety of massages and beauty treatments, multi-jet massage shower, jacuzzi, sauna, steam baths. Rooftop sun terrace. Bicycle hire. Breakfast room, lounge areas.

OUR EXPERTS SUGGEST...

A comfortable stay

Choose a bright and cheerful junior suite for a touch more space. The layout is open plan with a double bed and a comfortable sofa, and a stylishly modern bathroom with shower.

OFFERS AND SAVINGS

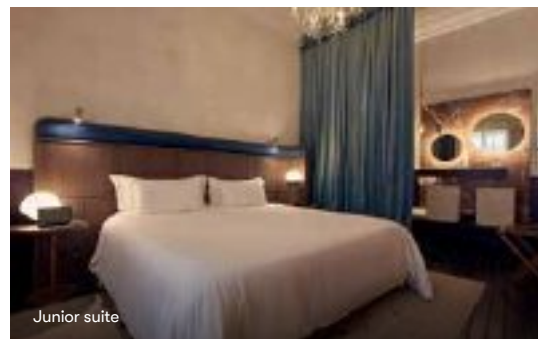
Please call us for early booking and free night offers, honeymoon extras including a complimentary room upgrade, restrictions apply.

Holiday price band: £ up to £1500pp

Based on 4 nights' duration inclusive of return flights and private transfers (approximately 20 minutes from Palma airport), two adults sharing a lead-in room type on a lead-in board basis. Please refer to page 6 'Price points and star ratings'. For an accurate quote based on latest prices please call our travel experts on freephone 0800 008 7288.

We categorise our price bands into £, ££ and £££.

They are intended only as a price guide where £ is up to £1500 per person, ££ is from £1501 to £3000 per person and £££ is over £3001 per person.



★★★★★ boutique

Can Bordoy Grand House & Garden

PALMA

BEAUTIFULLY RESTORED MANSION

Tucked away in the historic La Lonja quarter in Palma's historic old town, elegant Can Bordoy Grand House & Garden occupies a 16th century mansion that has been carefully renovated to preserve the charm and character of old whilst creating a five star luxury boutique hotel with modern comforts and a home from home feel.

Lavish and unique suites influenced by the art deco period feature custom-made furniture, with some boasting sparkling chandeliers, heavy velvet drapes, frescoed ceilings and vintage drinks cabinets creating a luxuriously decadent mood. Restaurant Botànic offers an innovative and healthy take on Mallorcan cuisine and elevates plant-based dishes to a new level, with breakfast served a la carte. The rooftop terrace with plunge pool is a lovely spot for sunbathing and admiring the splendid views over Palma.

The centrepiece is the delightful garden where guests can dine under dappled sunlight in the courtyard and enjoy the peaceful sanctuary of the heated swimming pool and sun terrace. The subterranean boutique spa offers an oasis of tranquillity for a selection of pampering treatments.

FEATURES

24 suites. Outdoor heated pool, rooftop plunge pool. Spa. Restaurant and bar. Private garden.

NEW TO CLASSIC
LUXURY BOUTIQUE
IDEAL FOR COUPLES

OUR EXPERTS SUGGEST... A terrace with views

The elegant and very generously sized sky suite on the third floor features a private terrace with ample space for a jacuzzi, sun loungers and a dining area. Views from here take in the majestic cathedral, the old town and the wonderful hotel garden.

OFFERS AND SAVINGS

Please call us for offers and savings.

Holiday price band: £ up to £1500pp

Based on 4 nights' duration inclusive of return flights and private transfers (approximately 20 minutes from Palma airport), two adults sharing a lead-in room type on a lead-in board basis. Please refer to page 6 'Price points and star ratings'. For an accurate quote based on latest prices please call our travel experts on freephone 0800 008 7288.

We categorise our price bands into £, ££ and £££. They are intended only as a price guide where £ is up to £1500 per person, ££ is from £1501 to £3000 per person and £££ is over £3001 per person.



Classic terrace room

★★★★★

Castillo Hotel Son Vida a Luxury Collection Hotel

SON VIDA, PALMA

A WORLD CLASS PROPERTY

With captivating panoramic views towards the bay of Palma, Castillo Hotel Son Vida, a Luxury Collection Hotel, combines an enriching heritage with thoughtful, personal service, and the overall sophisticated ambience extends throughout the 164 guest rooms and suites, elegantly furnished with indigenous accents and artworks from the hotel's extensive archives.

Leisure activities include three excellent golf courses, two outdoor swimming pools, and the Castillo Hotel Son Vida Spa with a 24-hour fitness centre which is flooded with natural day light.

A dining destination in its own right, the hotel has an inspired range of restaurants that make the most of the unsurpassed coastal aspect, from fine-dining El Castell to seasonal Sa Font pool bar serving refreshing drinks and healthy cuisine. With a venerable and storied past, Castillo Hotel Son Vida is defined by its heritage while embracing the present, marking this hotel as one of the island's premier destinations. This hotel is exclusively for adults aged 16 years or older.

FEATURES

164 rooms and suites. Two outdoor pools. Spa with indoor heated pool, bio sauna, Finnish sauna, steam bath, ice fountain, 24-hour fitness room. Arabella golf courses. Two restaurants, bar.

ONLY ADULTS
GOOD FOR GOLF
HERITAGE PROPERTY

OUR EXPERTS SUGGEST... A villa suite upgrade

Very generous in size and on two floors, the villa suite features four bedrooms and five bathrooms, a 50m² terrace with private pool and magnificent views, a private wellness centre and kitchen.

OFFERS AND SAVINGS

Please call us for early booking offers, dining upgrades and golf services available, restrictions apply.

Holiday price band: £ up to £1500pp

Based on 4 nights' duration inclusive of return flights and private transfers (approximately 20 minutes from Palma airport), two adults sharing a lead-in room type on a lead-in board basis. Please refer to page 6 'Price points and star ratings'. For an accurate quote based on latest prices please call our travel experts on freephone 0800 008 7288.

We categorise our price bands into £, ££ and £££. They are intended only as a price guide where £ is up to £1500 per person, ££ is from £1501 to £3000 per person and £££ is over £3001 per person.



Double room with sea view

★★★★★

Hospes Maricel & Spa

PALMA

FABULOUS WATERFRONT SETTING

In a privileged seafront setting on the edge of Cala Mayor and a 15 minute drive from Palma, Hospes Maricel & Spa is a stylish luxury retreat in grand 16th century Mallorcan mansion-style. It offers personalised service, a peaceful ambience and fine surroundings in which to relax and unwind.

The hotel comprises two buildings, the Palace where most rooms feature sea views, and the contemporary style Natura where Mediterranean-inspired guest rooms and suites boast private terrace with plunge pool. The buildings are connected via the hotel's impressive private underground walkway filled with foliage and surrounded by leafy gardens.

There is a gorgeous infinity pool complete with pool bar serving snacks and drinks, and a private jetty allowing for sea swimming, with the beach around a kilometre away. The sleek Maricel restaurant with its sea view terrace offers innovative cuisine and extensive breakfast choices, and the cocktail bar features live jazz once a week. The Bodyna Spa features indulgent treatments that can be enjoyed in unique cave rooms by the sea.

FEATURES

51 rooms and suites. Outdoor pool. Restaurant and two bars. Spa with treatments, sauna, steam room, gym.

NEW TO CLASSIC
IDEAL FOR COUPLES

OUR EXPERTS SUGGEST... A plunge pool

Choose a Natura deluxe room for ample space and a private terrace with an unheated plunge pool. Rooms are stylishly modern with Mediterranean-inspired décor, bare stone walls, original contemporary art, king size bed and comfortable seating.

OFFERS AND SAVINGS

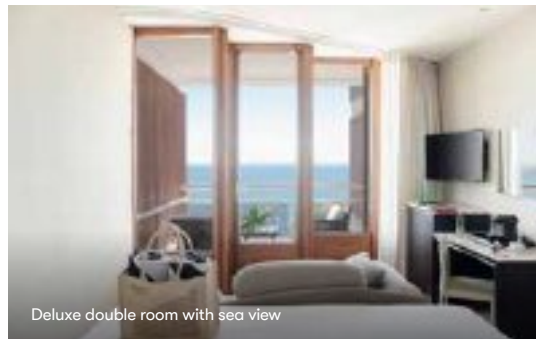
Please call us for offers and savings.

Holiday price band: £ up to £1500pp

Based on 4 nights' duration inclusive of return flights and private transfers (approximately 20 minutes from Palma airport), two adults sharing a lead-in room type on a lead-in board basis. Please refer to page 6 'Price points and star ratings'. For an accurate quote based on latest prices please call our travel experts on freephone 0800 008 7288.

We categorise our price bands into £, ££ and £££.

They are intended only as a price guide where £ is up to £1500 per person, ££ is from £1501 to £3000 per person and £££ is over £3001 per person.



Deluxe double room with sea view

★★★★★

Hotel de Mar Gran Melia

ILLETAS

TRANQUIL SETTING ON A BEAUTIFUL COVE

Enjoying a peaceful setting in the residential area of Illetas, Hotel de Mar Gran Melia boasts an enviable position directly facing the sea and features a small, sandy beach. Popular with Classic customers, the hotel has been architecturally designed to capitalise on the spectacular vistas and all guest rooms and suites enjoy sea views.

The hotel's interior reflects a very modern style with inviting guest rooms and suites offering a contemporary luxury experience. Dining options include Arrels by Marga Coll fine dining restaurant, Bardot restaurant specialising in fresh seafood at lunchtime during the summer months, and Perseo serving delicious breakfast and Amaro, a la carte Mediterranean delights.

There is a fine spa, a gym and two outdoor pools for days in the sun. This hotel is exclusively for those aged 15 years or older. A member of The Leading Hotels of the World.

FEATURES

137 rooms and suites. Outdoor pool, outdoor pool with Balinese beds payable locally and pool concierge service. Spa by Clarins with beauty treatments, massages, whirlpool. Gym. Mallorcan fine dining restaurant, lunch restaurant, a la carte restaurant, lobby bar and lounge.

ONLY ADULTS
RECOMMENDED SPA

OUR EXPERTS SUGGEST... A Red Level stay

Reserve a room or suite in the exclusive Red Level area and enjoy upgraded room amenities, access to the Red Level Lounge, private breakfast area, unlimited access to the water circuit at Spa by Clarins, bar with selected drinks and snack service.

OFFERS AND SAVINGS

Please call us for early booking and long stay offers, dining upgrades and honeymoon extras including a complimentary room upgrade, restrictions apply.

Holiday price band: £ up to £1500pp

Based on 7 nights' duration inclusive of return flights and private transfers (approximately 30 minutes from Palma airport), two adults sharing a lead-in room type on a lead-in board basis. Please refer to page 6 'Price points and star ratings'. For an accurate quote based on latest prices please call our travel experts on freephone 0800 008 7288.

We categorise our price bands into £, ££ and £££. They are intended only as a price guide where £ is up to £1500 per person, ££ is from £1501 to £3000 per person and £££ is over £3001 per person.



★★★★ superior

Hotel Bon Sol

ILLETAS

A LEGENDARY FAMILY RUN HOTEL

Hotel Bon Sol is a favourite with Classic customers, many of whom return year after year to enjoy the comfort and high quality service offered by this popular hotel. To the Xamena family the hotel is not only their home, it has been their life for more than 50 years.

Nothing is too much trouble for the staff and guests' requests are meticulously carried out. Furnished in traditional Mallorcan rustic style, this elegant family run hotel has a homely atmosphere, particularly reminiscent of a grand old Spanish house. Most of the classically furnished rooms have a sea view.

Direct lift, or 200 steps from across the road, descend to an oasis of subtropical gardens, waterfalls, swimming pools and then a considerable number of steps lead down to a small sandy beach.

FEATURES

120 rooms and suites. Outdoor pools, one heated, children's section of pool. Thalassotherapy spa, fitness room, sauna, Turkish bath and jacuzzi. Mini golf, two tennis courts and squash court. Restaurant, seasonal restaurant, breakfast restaurant, two bars. Weekly entertainment programme.

ECO LUXURY
IDEAL FOR COUPLES

OUR EXPERTS SUGGEST... A dining upgrade

Add half board to your booking and enjoy a waiter served set menu dinner in the main restaurant or in the seasonal restaurant; dinner can be swapped for lunch should you prefer, arrange locally.

OFFERS AND SAVINGS

Please call us for early booking offers, dining upgrades and honeymoon extras including a complimentary room upgrade, restrictions apply.

Holiday price band: £ up to £1500pp

Based on 7 nights' duration inclusive of return flights and private transfers (approximately 30 minutes from Palma airport), two adults sharing a lead-in room type on a lead-in board basis. Please refer to page 6 'Price points and star ratings'. For an accurate quote based on latest prices please call our travel experts on freephone 0800 008 7288.

We categorise our price bands into £, ££ and £££. They are intended only as a price guide where £ is up to £1500 per person, ££ is from £1501 to £3000 per person and £££ is over £3001 per person.



★★★★

Hotel Bendinat

BENDINAT

WONDERFULLY POPULAR AND TRANQUIL HOTEL

The old world flavour of Hotel Bendinat makes this an ideal hotel for those seeking tranquillity and relaxation. Exuding the atmosphere of a grand Mallorcan country house, Hotel Bendinat is a perfect choice for those in search of a restful holiday and provides a comfortable base from which to explore.

Many guest rooms are decorated in a typical Mallorcan style and some in a more modern design, although all boast a balcony or terrace. The excellent, typically Mediterranean food at the restaurant is matched by its charming setting and al fresco dining can be enjoyed on the terrace with its gorgeous sea views.

The hotel is set in a peaceful, residential area right by a rocky shore with direct access to the sea, and a sandy beach is only 400 metres away. Port Portals Nous with its cafés, bars and shops is only a short stroll away and there are seven golf courses locally. Palma centre is a 10 minute drive away.

FEATURES

62 rooms and suites. Outdoor swimming pool. A la carte restaurant, pool snack bar.

HOTEL LOYALTY
GOOD FOR GOLF
IDEAL FOR COUPLES

OUR EXPERTS SUGGEST...

A suite stay

If you are looking for space to spread out choose a suite with a separate living room and a terrace or balcony with views of the sea. Traditional style suites are located in the main building and smaller surrounding buildings, with modern style suites set in the annexe.

OFFERS AND SAVINGS

Please call us for early booking offers, dining upgrades and honeymoon extras including a complimentary room upgrade, restrictions apply.

Holiday price band: £ up to £1500pp

Based on 7 nights' duration inclusive of return flights and private transfers (approximately 30 minutes from Palma airport), two adults sharing a lead-in room type on a lead-in board basis. Please refer to page 6 'Price points and star ratings'. For an accurate quote based on latest prices please call our travel experts on freephone 0800 008 7288.

We categorise our price bands into £, ££ and £££.

They are intended only as a price guide where £ is up to £1500 per person, ££ is from £1501 to £3000 per person and £££ is over £3001 per person.



★★★★★

Iberostar Grand Portals Nous

PORTALS NOUS

CONTEMPORARY AND ULTRA STYLISH

Overlooking the cove in Portals Nous, 2km from Puerto Portals, Iberostar Grand Portals Nous is a luxury five star hotel designed by the renowned Marcel Wanders and offers avant-garde design, landscaped grounds and fine gastronomic experiences.

Stylish and ultra modern guest rooms and suites set in the main and beach buildings feature exclusive and innovative furnishings and décor. The restaurant serves local and international cuisine and facilities include a swimming pool with waterfall and terraces, as well as a fitness room and gardens, and for evening entertainment there's live music.

In addition, the beach is directly below the hotel and the stunning BioSpa offers a range of pampering treatments, Turkish bath and sauna.

FEATURES

66 rooms and suites. Outdoor swimming pool. BioSpa offering a range of treatments, Turkish bath, circuit showers and sauna. Fitness room. Restaurant, champagne bar and wellness bar.

ECO LUXURY
IDEAL FOR COUPLES

OUR EXPERTS SUGGEST... The penthouse

For the most indulgent stay book the penthouse suite; wonderful sea views, designer features and a spiral staircase that connects your bedroom level with a generously sized terrace with whirlpool bath at the top level.

OFFERS AND SAVINGS

Please call us for early booking and long stay offers, honeymoon extras including a complimentary room upgrade, restrictions apply.

Holiday price band: £ up to £1500pp

Based on 7 nights' duration inclusive of return flights and private transfers (approximately 30 minutes from Palma airport), two adults sharing a lead-in room type on a lead-in board basis. Please refer to page 6 'Price points and star ratings'. For an accurate quote based on latest prices please call our travel experts on freephone 0800 008 7288.

We categorise our price bands into £, ££ and £££.

They are intended only as a price guide where £ is up to £1500 per person, ££ is from £1501 to £3000 per person and £££ is over £3001 per person.



★★★★★ superior

The St Regis Mardavall Mallorca Resort

COSTA D'EN BLANES

LUXURIOUS RELAXATION AND PAMPERING

The St Regis Mardavall Mallorca Resort is located on the southwest coast of Mallorca and designed to attract contemporary lifestyles, and its spacious appeal invites those looking to relax in a sophisticated setting. Arranged across four terracotta hued buildings, the guest rooms and suites all have large private terraces with an alluring Mediterranean vista.

An arbiter of the island's most distinctive flavours, connoisseurs from near and far converge to dine at Michelin-starred Es Fum, where the exquisitely crafted tasting menu showcases seasonality, local ingredients and global culinary talent.

Offering prime views of the sea and surrounding nature, sun loungers are placed throughout rolling lawns and around the stately cascading pool. Innovative Arabella Spa is the resort's premier sensory destination, renowned for its holistic philosophy and visionary Chinese medical centre. An alluring draw for families, the imaginative Kids' Club provides the highest quality of care and attention with an inspiring array of engaging facilities.

YOUR ROOM OPTIONS

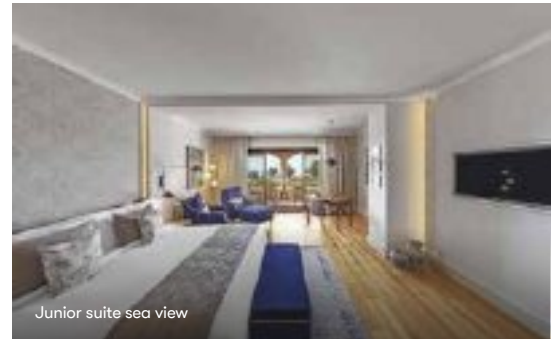
Junior suite sea view Open plan, decorated in an elegant style and featuring a sitting area and balcony with sea view.

Ocean one bedroom suite Featuring a separate lounge with tasteful furnishings, a kitchenette with open bar area, a marble bathroom, and balcony with wonderful views of the sea.

Diamond suite The spacious designer Diamond suite features a bedroom and separate lounge, kitchenette and spacious terrace with jacuzzi and views of the sea.

Blue Oasis suite An exclusive hideaway, the Blue Oasis suite comprises a separate lounge, kitchenette, terrace, bathroom and separate shower, and a private garden and heated pool.





Junior suite sea view

LUXURY HOTEL
GOOD FOR GOLF
MICHELIN DINING
IDEAL FOR FAMILIES
RECOMMENDED SPA

FEATURES

125 rooms and suites. Outdoor pool, children's pool. Arabella Spa with indoor heated pool. Access to four Arabella golf courses. Main restaurant, Michelin star gourmet restaurant, Mar Sea Club, bar. Children's club.

OFFERS AND SAVINGS

Please call us for early booking offers, dining upgrades, complimentary extras including food and beverage credits, restrictions apply.

Holiday price band: ££ from £1501 to £3000pp

Based on 7 nights' duration inclusive of return flights and private transfers (approximately 30 minutes from Palma airport), two adults sharing a lead-in room type on a lead-in board basis. Please refer to page 6 'Price points and star ratings'. For an accurate quote based on latest prices please call our travel experts on freephone 0800 008 7288.

We categorise our price bands into £, ££ and £££.

They are intended only as a price guide where £ is up to £1500 per person, ££ is from £1501 to £3000 per person and £££ is over £3001 per person.

OUR EXPERTS SUGGEST...

The half board

Book the half board option and as well as a delectable breakfast enjoy the ultimate farm-to-table dining experience at Terra Restaurant, locally sourced products in an authentic ambiance with Mallorcan charm.



Artist's impression



★★★★★

Kimpton Aysla Mallorca

SANTA PONCA

PEACEFUL MALLORCAN LUXURY

Tucked away amidst lush gardens a five minute drive from Santa Ponca, luxury hotel Kimpton Aysla Mallorca offers a tranquil and relaxed environment, modern and elegant interiors and warm, personalised service. Tastefully designed guest rooms with balcony or private garden, mixes traditional Mediterranean style elements with contemporary living and feature large floor-to-ceiling windows to maximise light.

Blending the freshest, locally sourced Spanish ingredients with the culinary culture of Asia, the Saba Restaurant presents beautifully colourful and flavoursome dishes, whilst the stylish poolside restaurant offers casual bites. The retro chic bar is ideal for freshly made cocktails and world tapas at night.

Guests enjoy complimentary use of bicycles, there is a state of the art gym and a yoga studio, two outdoor pools for cooling off, and the exclusive Maison Codage Spa offers a range of indulgent signature treatments, as well as an indoor and a vitality pool. One-of-a-kind workshops with local artisans are also a feature of the hotel.

FEATURES

79 rooms. Two outdoor pools. Two restaurants, two bars. Spa with indoor and vitality pool, fitness centre. Bicycles.

GOOD FOR GOLF
IDEAL FOR COUPLES

OUR EXPERTS SUGGEST... Exploring the area

Golf Santa Ponsa is located nearby as is the highly regarded Mallorca Country Club for a game of tennis. Port Adriano and its yacht marina and the main resort of Santa Ponca with its sandy beach are both a short five minute drive away.

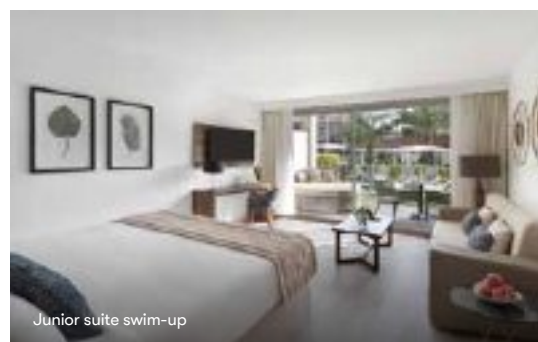
OFFERS AND SAVINGS

Please call us for early booking and free night offers, complimentary honeymoon extras, restrictions apply.

Holiday price band: £ up to £1500pp

Based on 7 nights' duration inclusive of return flights and private transfers (approximately 30 minutes from Palma airport), two adults sharing a lead-in room type on a lead-in board basis. Please refer to page 6 'Price points and star ratings'. For an accurate quote based on latest prices please call our travel experts on freephone 0800 008 7288.

We categorise our price bands into £, ££ and £££. They are intended only as a price guide where £ is up to £1500 per person, ££ is from £1501 to £3000 per person and £££ is over £3001 per person.



★★★★★

Zafiro Palace Palmanova

PALMA NOVA

STYLISH RESORT HOTEL IN CENTRAL LOCATION

Zafiro Palace Palmanova is sure to delight with its contemporary design, array of amenities and several dining venues. Beautifully styled junior suites feature the latest in-room amenities and balcony or terrace; swim-up and penthouse junior suites are highly recommended for that extra touch of luxury.

Dining choices include a main restaurant and four themed a la carte restaurants as well as a cafeteria. The beach is a mere 200 metres away and there is a spacious outdoor pool, a tranquil adult only pool with Bali beds, and a further five swim-up pools attached to the swim-up suites.

A programme of daytime activities and frequent evening entertainment is on offer, as is an excellent selection of sports amenities and an indoor pool. Younger guests will enjoy the pool, playground, mini club and special menu in the restaurant, whilst grown-ups can enjoy the spa with thermal pool and Turkish bath.

FEATURES

240 junior suites. Outdoor pool, adult only pool, children's pool, indoor seasonally heated pool. Balneum Spa & Wellness centre with treatments, thermal pool, jacuzzi, sauna, Turkish bath, fitness room. Aerobics, aqua gym, bicycle hire. Five restaurants, pool bar, cafeteria. Children's club, playground, children's menu.

IDEAL FOR FAMILIES
OPTIONAL ALL INCLUSIVE

OUR EXPERTS SUGGEST... Adding the all inclusive

Enjoy the flexibility of the all inclusive option and dine in the main restaurant or, once a week, in each of the four a la carte restaurants. Also included are snacks, hot drinks and a selection of local and international soft and alcoholic drinks and cocktails.

OFFERS AND SAVINGS

Please call us for early booking and long stay offers, all inclusive upgrades and honeymoon extras including a complimentary room upgrade, restrictions apply.

Holiday price band: £ up to £1500pp

Based on 7 nights' duration inclusive of return flights and private transfers (approximately 20 minutes from Palma airport), two adults sharing a lead-in room type on a lead-in board basis. Please refer to page 6 'Price points and star ratings'. For an accurate quote based on latest prices please call our travel experts on freephone 0800 008 7288.

We categorise our price bands into £, ££ and £££. They are intended only as a price guide where £ is up to £1500 per person, ££ is from £1501 to £3000 per person and £££ is over £3001 per person.



★★★★★

Hilton Mallorca Galatzo

COSTA DE LA CALMA

STUNNING VIEWS

Standing in immaculately kept gardens in the hills between Costa de la Calma and Peguera, whitewashed Hilton Mallorca Galatzo is a contemporary and stylish five star hotel with stunning views of the surrounding landscape and towards the coast and sea. Santa Ponca and Andratx are a 20 minute drive away.

Guest rooms and suites are pleasingly modern and feature balcony or terrace. A buffet breakfast is available at La Cocina each day, the Alma Restaurant offers all-day dining, lively entertainment and fabulous sea views, with the signature restaurant Cotton Club ideal for a long lunch by the poolside.

The inviting outdoor pool and shaded terrace is perfect for warm days in the sun, there is tennis and a fitness centre, with hiking trails around 2km away. The beach can be reached by the hotel's shuttle service. A children's club offers a range of fun activities for younger family members, and grown-ups can book in for a pampering treatment at the spa.

FEATURES

172 rooms and suites. Outdoor pool. Two restaurants, two bars. Spa with indoor pool, fitness centre. Tennis. Children's club.

GOOD FOR GOLF
IDEAL FOR FAMILIES

OUR EXPERTS SUGGEST... A suite upgrade

We highly recommend the generously sized Galatzo suite with a living area, king size bedroom and a spacious terrace with lovely sea views.

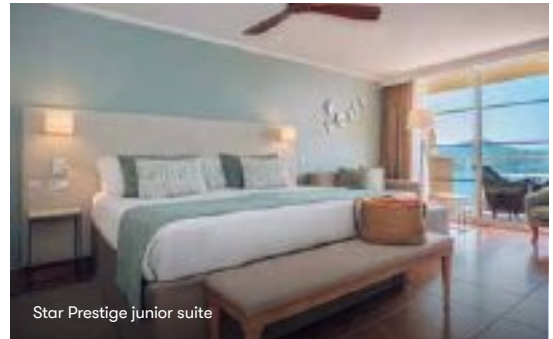
OFFERS AND SAVINGS

Please call us for early booking offers, restrictions apply.

Holiday price band: £ up to £1500pp

Based on 7 nights' duration inclusive of return flights and private transfers (approximately 30 minutes from Palma airport), two adults sharing a lead-in room type on a lead-in board basis. Please refer to page 6 'Price points and star ratings'. For an accurate quote based on latest prices please call our travel experts on freephone 0800 008 7288.

We categorise our price bands into £, ££ and £££. They are intended only as a price guide where £ is up to £1500 per person, ££ is from £1501 to £3000 per person and £££ is over £3001 per person.



Star Prestige junior suite

★★★★★

Iberostar Selection Jardin del Sol Suites

COSTA DE LA CALMA

A TRANQUIL ADULT ONLY RETREAT

Iberostar Selection Jardin del Sol Suites is set directly on the seafront in Costa de la Calma in a quiet location overlooking the bay of Santa Ponca. A tranquil hotel, it is perfect for couples. It's 1.5km to the wide sandy beach and 3km to the centre of Santa Ponca.

The spacious suites are decorated in calm, neutral colours, each with a balcony and wonderful sea views. The hotel's outdoor freeform pool overlooks the Mediterranean and there is sea access from the rocks in front of the pool area.

There's a panoramic restaurant, La Calma, and Café del Sol bar for lighter snacks. The elegant Spa Sensations boasts an indoor pool, saunas, hammam and a range of treatments, and additional sports facilities include pilates classes, aqua gym and paddle boarding. This hotel is exclusively for adults aged 16 years or older.

FEATURES

260 suites. Outdoor pool. Spa Sensations with treatments, steam bath, massage, sauna, indoor pool, fitness room. Main restaurant, Japanese Teppanyaki restaurant, bar, pool bar. Evening entertainment.

STAR PRESTIGE INCLUDES

Access to private pool with hammocks, outdoor jacuzzi, sun terrace with Balinese beds, exclusive savings at Spa Sensations and access to Star Prestige lounge bar.

ECO LUXURY
ONLY ADULTS
OPTIONAL ALL INCLUSIVE

OUR EXPERTS SUGGEST... The all inclusive

Book the all inclusive option for a hassle free holiday. Enjoy breakfast, lunch and dinner in the main restaurant with show cooking, snacks and ice cream at select times and local wine, beer and spirits, hot and non-alcoholic drinks.

OFFERS AND SAVINGS

Please call us for early booking and long stay offers, all inclusive upgrades and honeymoon extras including a complimentary room upgrade, restrictions apply.

Holiday price band: £ up to £1500pp

Based on 7 nights' duration inclusive of return flights and private transfers (approximately 30 minutes from Palma airport), two adults sharing a lead-in room type on a lead-in board basis. Please refer to page 6 'Price points and star ratings'. For an accurate quote based on latest prices please call our travel experts on freephone 0800 008 7288.

We categorise our price bands into £, ££ and £££.

They are intended only as a price guide where £ is up to £1500 per person, ££ is from £1501 to £3000 per person and £££ is over £3001 per person.



Junior suite with jacuzzi and sea view

★★★★★

Pure Salt Port Adriano

PORT ADRIANO, NEAR SANTA PONCA

EXCLUSIVELY BOUTIQUE IN A PRIME LOCATION

Pure Salt Port Adriano is a very bright and colourful property. It boasts fantastic sea views, and an attractive reception area leading to the swimming pool and outside recreational area.

Golf enthusiasts may benefit from good value green fees and transport to Santa Ponsa and the T-Golf and Country Club. Al fresco dining at the hotel is highly recommended so that guests can enjoy the lovely views over the nearby beach and marina.

The nearest sandy beach is just 100 metres from the hotel, and should you wish for a lively evening out, the Port Adriano Marina offers plenty of dining opportunities, cocktail bars and summer events, and popular Santa Ponca is just a short taxi ride away. The hotel provides a complimentary shuttle service to the marina. This hotel is exclusively for adults aged 18 years or older.

FEATURES

93 rooms and suites. Outdoor pool. Spa and wellness centre with sauna, Turkish bath, sensation shower, fitness room, indoor swimming pool, hydro-massage, Vichy shower and health and beauty treatments. Restaurant.

ONLY ADULTS
HOTEL LOYALTY
GOOD FOR GOLF

OUR EXPERTS SUGGEST... A dining upgrade

Choose the half board option and you can enjoy an extravagant breakfast each morning and a waiter served three course meal with Mediterranean and international flavours in the evening. Dine in the restaurant or al fresco on the gorgeous terrace.

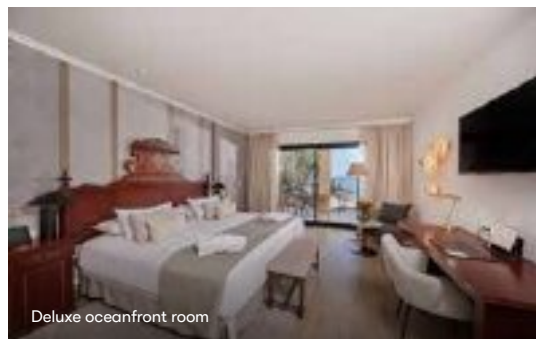
OFFERS AND SAVINGS

Please call us for early booking offers and savings, dining upgrades and honeymoon extras including a complimentary room upgrade, restrictions apply.

Holiday price band: £ up to £1500pp

Based on 7 nights' duration inclusive of return flights and private transfers (approximately 30 minutes from Palma airport), two adults sharing a lead-in room type on a lead-in board basis. Please refer to page 6 'Price points and star ratings'. For an accurate quote based on latest prices please call our travel experts on freephone 0800 008 7288.

We categorise our price bands into £, ££ and £££. They are intended only as a price guide where £ is up to £1500 per person, ££ is from £1501 to £3000 per person and £££ is over £3001 per person.



★★★★★

Secrets Mallorca Villamil Resort & Spa

PAGUERA

WELL-LOVED BEACHSIDE SETTING

As one of the first Secrets Resorts & Spas in Europe, Secrets Mallorca Villamil Resort & Spa is perfect for those seeking a romantic and relaxing holiday. Located in the Bay of Paguera and boasting an extensive sun terrace and landscaped gardens the hotel enjoys an elegant position above an attractive pine-fringed seafront with direct access down some steps to a beach of fine sand.

Classically elegant guest rooms and suites feature private balcony or terrace and front sea view rooms are highly recommended. The delightful swimming pool is a fabulous spot for sunny days, and there is regular evening dancing and discreet live entertainment.

Fine international cuisine can be sampled in the main restaurant, light lunches at the Barefoot Grill and a Mediterranean menu at the Seaside Grill. This hotel is exclusively for adults aged 18 years or older.

FEATURES

162 rooms and suites. Outdoor heated pool with sun terraces. Spa offering a comprehensive range of services and facilities. Five restaurants, five bars.

ONLY ADULTS
OPTIONAL ALL INCLUSIVE

OUR EXPERTS SUGGEST... The Preferred Club

Book a Deluxe Preferred Club room or suite and benefit from dedicated concierge service, in-room minibar with soft drinks and beer, daily breakfast in the World Cafe restaurant and private lounge with afternoon hors d'oeuvres and daily continental breakfast service.

OFFERS AND SAVINGS

Please call us for early booking offers and savings, all inclusive upgrades and honeymoon extras including a complimentary room upgrade, restrictions apply.

Holiday price band: £ up to £1500pp

Based on 7 nights' duration inclusive of return flights and private transfers (approximately 30 minutes from Palma airport), two adults sharing a lead-in room type on a lead-in board basis. Please refer to page 6 'Price points and star ratings'. For an accurate quote based on latest prices please call our travel experts on freephone 0800 008 7288.

We categorise our price bands into £, ££ and £££. They are intended only as a price guide where £ is up to £1500 per person, ££ is from £1501 to £3000 per person and £££ is over £3001 per person.

Mallorca

Camp de Mar, Puerto d'Andratx



★★★★★

Zafiro Palace Andratx

CAMP DE MAR, PUERTO D'ANDRATX

CONTEMPORARY LUXURY

Adjacent to the prestigious Andratx Golf Club in the tranquil resort of Camp de Mar and 4km from the port area of Andratx, Zafiro Palace Andratx is set in extensive grounds featuring spacious gardens and offers facilities that will appeal to all ages.

Contemporary style guest rooms provide comfort, modern amenities and views over the bay and some rooms benefit from a private terrace with direct access to a shared pool. With five restaurants there is something for all occasions and palates.

Guests can choose to relax by one of the numerous swimming pools or head for the idyllic beach, and for a spot of pampering the hotel's spa and health facility offers a range of treatments. Golfers can tee off at the prestigious Andratx Golf Club and children are well catered for with a separate pool, playground and mini club.

FEATURES

30+ junior suites. Numerous outdoor pools, children's pool. Spa with sauna, jacuzzi, Turkish bath, two indoor pools, fitness room. Multi-sports court, table tennis. Main restaurant, four a la carte restaurants, bars. Children's club, playground.

GOOD FOR GOLF
IDEAL FOR FAMILIES
OPTIONAL ALL INCLUSIVE

OUR EXPERTS SUGGEST... The all inclusive option

Book the all inclusive option for a hassle free family holiday. Enjoy a selection of drinks, daytime snacks, late breakfast and full board meals with the option of dining in each of the four la carte restaurants once a week from May to October.

OFFERS AND SAVINGS

Please call us for early booking and long stay offers, all inclusive upgrades and honeymoon extras including a complimentary room upgrade, restrictions apply.

Holiday price band: £ up to £1500pp

Based on 7 nights' duration inclusive of return flights and private transfers (approximately 40 minutes from Palma airport), two adults sharing a lead-in room type on a lead-in board basis. Please refer to page 6 'Price points and star ratings'. For an accurate quote based on latest prices please call our travel experts on freephone 0800 008 7288.

We categorise our price bands into £, ££ and £££. They are intended only as a price guide where £ is up to £1500 per person, ££ is from £1501 to £3000 per person and £££ is over £3001 per person.



Standard double room

★★★★ superior

GOOD FOR GOLF

Mon Port Hotel & Spa

PUERTO D'ANDRATX

A POPULAR HOTEL IN A STUNNING SETTING

Mon Port Hotel & Spa is set on the exclusive Andratx peninsula, 800 metres from the pebble beach at Cala Fonoll, and a short taxi journey to the delightful Port of Andratx which boasts a smart marina with shops and restaurants.

The hotel comprises a collection of small buildings overlooking the pleasant gardens and spacious swimming pool area. Guest rooms are traditionally styled, each with a balcony or terrace, and the restaurant and bar areas are bright and spacious.

There's a well-equipped fitness room and the Blue Spa offers specialist treatments including a thermal waters circuit which uses natural light, delicious aromas and combinations of water pressure to aid relaxation. Set in a privileged position, the hotel is perfect for exploring the best that Mallorca has to offer in the south and west.

FEATURES

136 rooms and suites. Outdoor swimming pool, indoor heated pool, children's pool. Blue Spa offering sauna, steam room, jacuzzi, numerous treatments, hydrotherapy and massages. Fitness room. Tennis courts, paddle courts, bike hire; all payable locally. Restaurant, bar.

OUR EXPERTS SUGGEST... A spot of pampering

The hotel's wellness centre is a lovely setting for a range of beauty and body treatments, oxygen facials, therapeutic and relaxing massages, Ayurveda and hydrotherapy to pamper body and mind.

OFFERS AND SAVINGS

Please call us for early booking offers and dining upgrades.

Holiday price band: £ up to £1500pp

Based on 7 nights' duration inclusive of return flights and private transfers (approximately 35 minutes from Palma airport), two adults sharing a lead-in room type on a lead-in board basis. Please refer to page 6 'Price points and star ratings'. For an accurate quote based on latest prices please call our travel experts on freephone 0800 008 7288.

We categorise our price bands into £, ££ and £££.

They are intended only as a price guide where £ is up to £1500 per person, ££ is from £1501 to £3000 per person and £££ is over £3001 per person.

Mallorca

Deya



Superior junior suite

★★★★★ superior

La Residencia A Belmond Hotel

DEYA

SOPHISTICATION, CHARM AND CHARACTER

Nestling in the peaceful hills, La Residencia, A Belmond Hotel is unique in terms of culture, architecture and location. Set amidst acres of citrus groves, landscaped gardens and steeply-stepped terraces, this converted 16th century manor house offers exceptionally high levels of comfort and attention to detail. In addition to its sophistication and fantastic views, guests will delight in the hotel's original art, and the concerts, exhibitions and cultural events frequently held in Deya.

Guest rooms and suites are gorgeous, the restaurant features fine, seasonal cuisine and the luxurious spa offers a comprehensive menu of therapeutic treatments that can be fully personalised.

The beautiful swimming pool area is a lovely spot for catching the sun's rays, or there's a seasonal courtesy shuttle service to a rocky cove 2.5km away; perfect for sunbathing and light lunches at the secluded bar.

FEATURES

70 rooms and suites. Two outdoor pools. Spa area with six treatment rooms, three with private terrace. Heated indoor pool, sauna, steam room, outdoor jacuzzi, fitness room and beauty centre. Mountain bikes and tennis courts. Main restaurant, poolside restaurant. Children's club from four to 12 years.

ECO LUXURY
LUXURY HOTEL
RECOMMENDED SPA

OUR EXPERTS SUGGEST...

A villa stay

The Villa at Belmond La Residencia, just a few minutes' walk from the hotel, is a deluxe self-catering establishment for up to six guests, boasting a private pool and fantastic views.

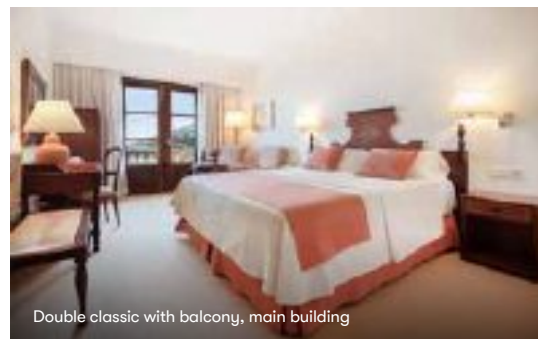
OFFERS AND SAVINGS

Please call us for free night offers, dining upgrades, complimentary extras and honeymoon extras including a complimentary room upgrade, restrictions apply.

Holiday price band: **££** from £1501 to £3000pp

Based on 7 nights' duration inclusive of return flights and private transfers (approximately 40 minutes from Palma airport), two adults sharing a lead-in room type on a lead-in board basis. Please refer to page 6 'Price points and star ratings'. For an accurate quote based on latest prices please call our travel experts on freephone 0800 008 7288.

We categorise our price bands into £, ££ and £££. They are intended only as a price guide where £ is up to £1500 per person, ££ is from £1501 to £3000 per person and £££ is over £3001 per person.



Double classic with balcony, main building

★★★★

IDEAL FOR COUPLES

Es Moli

DEYA

EVER POPULAR, SCENIC AND INTIMATE

Es Moli is situated on a slope opposite the village of Deya, one of Mallorca's most charming spots, with extensive views of the hillsides and valley down to the blue waters of the Mediterranean Sea.

Originally a 17th century manor house, Es Moli was converted in the 1960's into a hotel. Guest rooms are located in the main building or in the annexe where the rooms are reached by several flights of steep steps and no room service is available. Its terraced gardens, shaded by palm, citrus and olive trees, are perfect for relaxation; there's even a spring which supplies the swimming pool and creates a special micro-climate where rare plants thrive.

A limited shuttle service runs to the pristine waters of Muleta Cove, a protected beach 8km away, where comfortable lounge chairs, dressing rooms and a freshwater shower are available exclusively for Es Moli guests.

FEATURES

87 rooms. Outdoor spring water pool heated as required. Restaurants, tapas bar, poolside bar. Shuttle service three times a day to Muleta Cove.

OUR EXPERTS SUGGEST... The delicious food

Book half board, and in addition to an abundant breakfast, enjoy delectable three course dinners in the Es Jardí Restaurant; a daily menu of the best local, Mediterranean and international cuisine is on offer.

OFFERS AND SAVINGS

Please call us for early booking offers and savings, dining upgrades and honeymoon extras including a complimentary room upgrade, restrictions apply.

Holiday price band: £ up to £1500pp

Based on 7 nights' duration inclusive of return flights and private transfers (approximately 50 minutes from Palma airport), two adults sharing a lead-in room type on a lead-in board basis. Please refer to page 6 'Price points and star ratings'. For an accurate quote based on latest prices please call our travel experts on freephone 0800 008 7288.

We categorise our price bands into £, ££ and £££. They are intended only as a price guide where £ is up to £1500 per person, ££ is from £1501 to £3000 per person and £££ is over £3001 per person.



★★★★★ boutique

NEW TO CLASSIC
LUXURY BOUTIQUE

Son Bunyola Hotel & Villas

BANYALBUFAR

SIMPLY STUNNING

On the northwest coast of Mallorca and with the spectacular backdrop of the Tramuntana mountain range, the vast estate Son Bunyola includes three luxury villas and a 16th century manor house that has been meticulously restored and converted into a brand new, luxurious and intimate boutique hotel retaining all its original features.

Beautifully elegant guest rooms and suites, each with their own charm and style, feature splendid panoramic vistas with some suites boasting 360-degree sea and mountain views. Each of the villas have their own unique style and character and offer a high level of privacy, ample space both inside and out, a private swimming pool and stunning views.

One of the hotel's two restaurants is set in estate's former olive press. Guests can spend the day relaxing by the outdoor pool, indulge in a relaxing spa treatment, play a game of tennis or make the most of the surrounding area and explore on foot or by bicycle. A leisurely stroll away is a delightful pebble beach. A part of Virgin Limited Edition collection.

FEATURES

26 rooms and suites, three villas. Outdoor pool. Two restaurants. Spa. Tennis.

OUR EXPERTS SUGGEST...

A villa stay

The traditional Mallorcan style Sa Punta de S'Agua villa comprises five en-suite bedrooms, Sa Terra Rotja near the edge of the estate has four bedrooms, and stunning Son Balagueret, spread over three floors, features four bedrooms, a central courtyard and a quirky turret.

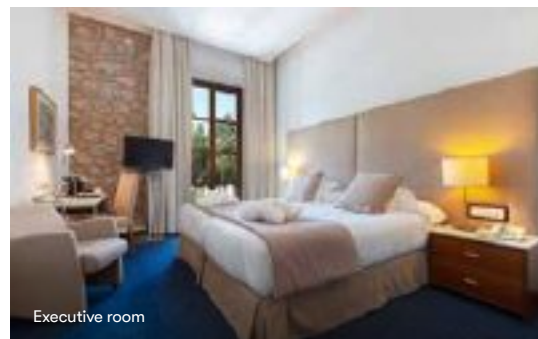
OFFERS AND SAVINGS

Please call us for offers and savings.

Holiday price band: £ up to £1500pp

Based on 7 nights' duration inclusive of return flights and private transfers (approximately 45 minutes from Palma airport), two adults sharing a lead-in room type on a lead-in board basis. Please refer to page 6 'Price points and star ratings'. For an accurate quote based on latest prices please call our travel experts on freephone 0800 008 7288.

We categorise our price bands into £, ££ and £££. They are intended only as a price guide where £ is up to £1500 per person, ££ is from £1501 to £3000 per person and £££ is over £3001 per person.



★★★★★

IDEAL FOR COUPLES

Gran Hotel Soller

SOLLER

BEAUTIFUL, COMFORTABLE AND RELAXING

Set in the heart of Soller, 150 metres from the central square, Gran Hotel Soller is an 18th century building lovingly converted into a very personal and comfortable hotel with tastefully decorated bedrooms and a high standard of amenities.

An indoor pool forms part of the small spa, and the rooftop outdoor pool has a modest sunbathing terrace with spectacular views. There's an a la carte restaurant and a rooftop bar by the pool for light lunches in summer.

The beach at Puerto Soller is 3km away and is easily reached by a frequent tram service from the centre of Soller. Gran Hotel Soller is an excellent choice for experiencing the real Mallorca, and offers an ideal base to explore the beautiful west coast. Car hire recommended.

FEATURES

38 rooms and suites. Rooftop swimming pool. Spa area with heated indoor pool, sauna, jacuzzi and massage. Fitness centre. Beauty salon. A la carte restaurant, bar, rooftop snack bar with views of surrounding area.

OUR EXPERTS SUGGEST...

A dining upgrade

Book the half board upgrade and enjoy a delightful breakfast and a flavourful three course menu in the evenings in the romantic setting of the Ca'n Blau restaurant. Should you wish, you can swap dinner for a set menu lunch.

OFFERS AND SAVINGS

Please call us for early booking and free night offers, dining upgrades, complimentary extras and honeymoon extras including a complimentary room upgrade, restrictions apply.

Holiday price band: £ up to £1500pp

Based on 7 nights' duration inclusive of return flights and private transfers (approximately 30 minutes from Palma airport), two adults sharing a lead-in room type on a lead-in board basis. Please refer to page 6 'Price points and star ratings'. For an accurate quote based on latest prices please call our travel experts on freephone 0800 008 7288.

We categorise our price bands into £, ££ and £££.

They are intended only as a price guide where £ is up to £1500 per person, ££ is from £1501 to £3000 per person and £££ is over £3001 per person.



★★★★ boutique

Aimia Hotel

PUERTO DE SOLLER

DELIGHTFUL FAMILY RUN BOUTIQUE HOTEL

Puerto de Soller is one of Mallorca's hidden delights boasting a charming port with a small sandy beach and a good selection of bars and restaurants.

Aimia Hotel is a modern property featuring well-designed and comfortable rooms, a pleasant outdoor swimming pool area, and an attractive spa with indoor pool. The style of the property is exemplified by the attractive reception which leads to the bar and the restaurant which provides enviable breakfasts and tasty evening meals.

The hotel is just 50 metres across the road from the beach at Puerto de Soller, and very close to the local tram service to Soller which in turn links with the delightful narrow-gauge railway to Palma. There are hiking and Nordic walking tours available from February to June and September to October, payable locally.

FEATURES

43 rooms and suites. Outdoor swimming pool, children's pool. Spa with fitness room, jacuzzi, indoor pool, sauna, Turkish bath and numerous health and beauty treatments. Restaurant with international cuisine and al fresco dining, cocktail bar.

HOTEL LOYALTY
BOUTIQUE STYLE

OUR EXPERTS SUGGEST... A junior suite

Opt for the junior suite and enjoy the best views over the bay from your terrace. Set on the top floor it features an open plan layout with a spacious living space and bedroom and en-suite bathroom with jacuzzi bathtub and shower.

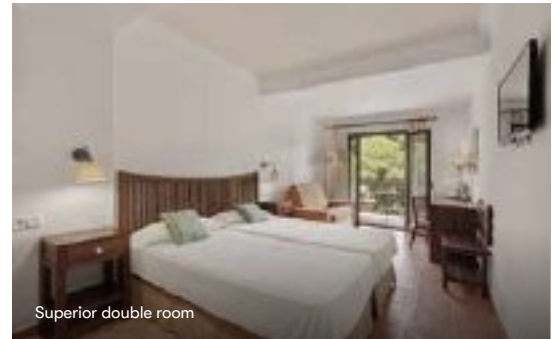
OFFERS AND SAVINGS

Please call us for early booking and free night offers, dining upgrades, complimentary loyalty extras and honeymoon extras, restrictions apply.

Holiday price band: £ up to £1500pp

Based on 7 nights' duration inclusive of return flights and private transfers (approximately 45 minutes from Palma airport), two adults sharing a lead-in room type on a lead-in board basis. Please refer to page 6 'Price points and star ratings'. For an accurate quote based on latest prices please call our travel experts on freephone 0800 008 7288.

We categorise our price bands into £, ££ and £££. They are intended only as a price guide where £ is up to £1500 per person, ££ is from £1501 to £3000 per person and £££ is over £3001 per person.



★★★★

Hotel Es Port

PUERTO DE SOLLER

POPULAR HOTEL CLOSE TO THE SEAFRONT

Situated on the west coast in Puerto de Soller, a small resort facing a beautiful bay surrounded by a rocky coast, Hotel Es Port is centred around a 17th century fortified mansion that is privately owned and managed by the Montis family.

The hotel, which is committed to operating as sustainably as possible, has extensive grounds of lemon, orange and olive trees and an organic garden. It's just 200 metres from a sandy beach. Set over three buildings, modest guest rooms vary in style and size, from rustic charm to more modern décor.

Breakfast and dinner is available in the main restaurant and during summer the poolside Sa Figuera is also open. In addition, there's an outdoor and indoor pool and three tennis courts. Between Puerto de Soller and the village of Soller, there's a traditional tram service which also connects to the delightful narrow-gauge railway to Palma.

FEATURES

148 rooms and suites. Outdoor pool with children's section. Heated indoor pool, adult only 1 June to 31 August, sauna and jacuzzi. Health packages featuring anti-stress and therapeutic programmes. Main restaurant, poolside seasonal a la carte restaurant. Main bar with olive press and open fireplace.

ECO LUXURY
IDEAL FOR COUPLES

OUR EXPERTS SUGGEST... Enjoying a charming space

All of the rooms are charming and individual at Es Port; junior suites are located across the hotel's three buildings, start at 36m² and all have a terrace or balcony and beautiful views of the gardens and the mountains.

OFFERS AND SAVINGS

Please call us for dining upgrades and honeymoon extras, restrictions apply.

Holiday price band: £ up to £1500pp

Based on 7 nights' duration inclusive of return flights and private transfers (approximately 45 minutes from Palma airport), two adults sharing a lead-in room type on a lead-in board basis. Please refer to page 6 'Price points and star ratings'. For an accurate quote based on latest prices please call our travel experts on freephone 0800 008 7288.

We categorise our price bands into £, ££ and £££.

They are intended only as a price guide where £ is up to £1500 per person, ££ is from £1501 to £3000 per person and £££ is over £3001 per person.



★★★★

ONLY ADULTS

Pure Salt Port Soller

PUERTO DE SOLLER

MAGNIFICENT BAY VIEWS

A relaxing adult only refuge, Pure Salt Port Soller enjoys uninterrupted sea views from its position overlooking the sandy beach in the bay of Soller, with the main pedestrianised promenade a short stroll away.

Interiors are contemporary chic, rooms bright and modern and offer a choice of mountain or sea views. The main restaurant features buffet breakfasts and Mediterranean-inspired a la carte dinners with the option of dining al fresco on the spacious terrace.

The delightful pool enjoys its lofty position in a quiet and private area of the hotel and the climb up is rewarded with panoramic seascapes, a generous sun terrace and a sense of peace. The hotel also features a bijou gym and wellness centre. Soller is a 20 minute ride by historic tram, and the Tramuntana Mountains are perfect for hiking and cycling. This hotel is exclusively for those aged 14 years or older.

FEATURES

90 rooms. Outdoor pool. Restaurant. Wellness centre with two spa treatment rooms, Turkish bath, gym.

OUR EXPERTS SUGGEST...

A sea view

We highly recommend booking one of the bright and airy double rooms facing the beach with their large, furnished balcony for the best views of the bay of Soller. Sunsets from these balconies are a particular highlight.

OFFERS AND SAVINGS

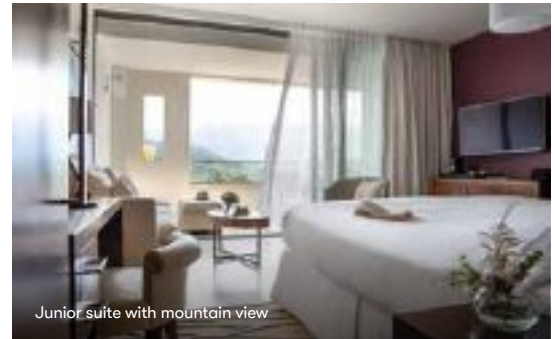
Please call us for early booking offers and savings, restrictions apply.

Holiday price band: £ up to £1500pp

Based on 7 nights' duration inclusive of return flights and private transfers (approximately 45 minutes from Palma airport), two adults sharing a lead-in room type on a lead-in board basis. Please refer to page 6 'Price points and star ratings'. For an accurate quote based on latest prices please call our travel experts on freephone 0800 008 7288.

We categorise our price bands into £, ££ and £££.

They are intended only as a price guide where £ is up to £1500 per person, ££ is from £1501 to £3000 per person and £££ is over £3001 per person.



Junior suite with mountain view

★★★★★ superior

Jumeirah Port Soller Hotel & Spa

PUERTO DE SOLLER

LUXURIOUS, SOPHISTICATED, STUNNING VIEWS

Dramatically perched on a hilltop and enjoying enviable views over the bay of picturesque Puerto de Soller, Jumeirah Port Soller Hotel & Spa is part of the prestigious Jumeirah chain of hotels renowned for their world class service and traditional hospitality.

Set into the hillside and in harmony with the surrounding landscape 11 separate buildings, connected by walkways and internal passageways, house the 121 guest rooms and suites. Located amidst the scented gardens are two gorgeous swimming pools, family friendly Sa Talaia and an adult only infinity pool, minimum 12 years, whilst the exclusive Talise Spa features spacious treatment suites and a hydro pool.

Cap Roig offers breakfast, lunch and a la carte evening meals, and the fabulous Sunset Lounge is the perfect spot to enjoy cocktails and light snacks with splendid views over the bay and port. The area is ideal for outdoor activities and there are opportunities for hiking, trekking, mountain biking and climbing.

FEATURES

121 rooms and suites. Outdoor pool. Infinity pool, minimum 12 years. Spa, minimum 16 years. Restaurants, lounge, minimum 12 years. Pool bars. Children's club. Private yacht hire.

LUXURY HOTEL
IDEAL FOR FAMILIES
RECOMMENDED SPA

OUR EXPERTS SUGGEST... An indulgent treat

The clifftop setting of the hotel's innovative, award-winning Talise Spa is fabulous; treat yourself to a head-to-toe revival ritual, a pure radiance facial, hydrating body wrap or the spa's exclusive 5 Senses massage.

OFFERS AND SAVINGS

Please call us for early booking offers, free night offers and dining upgrades, restrictions apply.

Holiday price band: ££ from £1501 to £3000pp

Based on 7 nights' duration inclusive of return flights and private transfers (approximately 45 minutes from Palma airport), two adults sharing a lead-in room type on a lead-in board basis. Please refer to page 6 'Price points and star ratings'. For an accurate quote based on latest prices please call our travel experts on freephone 0800 008 7288.

We categorise our price bands into £, ££ and £££.

They are intended only as a price guide where £ is up to £1500 per person, ££ is from £1501 to £3000 per person and £££ is over £3001 per person.



★★★★★ boutique

ONLY ADULTS
LUXURY BOUTIQUE

La Moraleja The Quiet Hotel

CALA SAN VICENTE

TRANQUILITY IN BEAUTIFUL SURROUNDINGS

La Moraleja The Quiet Hotel is a classic Mallorcan mansion with the atmosphere of a sophisticated private home. The intimate ambience pervades the whole of this small, characterful and supremely elegant property which is set in tranquil gardens and surrounded by spectacular mountain views. The owner takes a personal interest in the hotel and high levels of customer service can be expected.

The hotel's beautifully traditional furnishings are complemented by a fine collection of art and antiques; the decor of each of the guest rooms is enhanced by unique paintings from the owner's private collection.

La Moraleja The Quiet Hotel enjoys an excellent location on the outskirts of Cala San Vicente and is just 300 metres from the beach. This hotel is exclusively for adults aged 18 years or older.

FEATURES

22 rooms and suites. Two freshwater swimming pools, one heated during winter months, and a sun terrace. Restaurant, poolside snack bar. Extensive gardens. Card room, spacious lounges leading on to terraces.

OUR EXPERTS SUGGEST... A dining upgrade

Choose half board and you can enjoy a delightful breakfast each morning and dine on Mediterranean and international dishes at the main restaurant in the evening with three choices for each of the three courses.

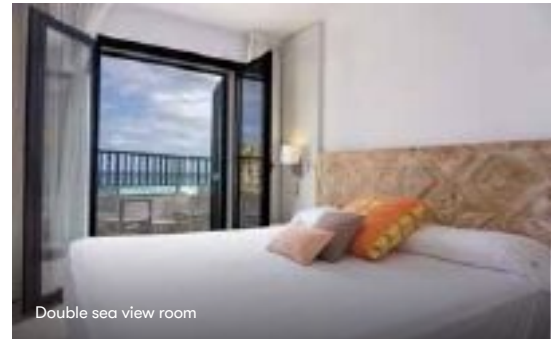
OFFERS AND SAVINGS

Please call us for early booking offers and savings, dining upgrades and complimentary honeymoon extras, restrictions apply.

Holiday price band: £ up to £1500pp

Based on 7 nights' duration inclusive of return flights and private transfers (approximately 60 minutes from Palma airport), two adults sharing a lead-in room type on a lead-in board basis. Please refer to page 6 'Price points and star ratings'. For an accurate quote based on latest prices please call our travel experts on freephone 0800 008 7288.

We categorise our price bands into £, ££ and £££. They are intended only as a price guide where £ is up to £1500 per person, ££ is from £1501 to £3000 per person and £££ is over £3001 per person.



Double sea view room

★★★★ boutique

BOUTIQUE STYLE
IDEAL FOR COUPLES

Hoposa Niu

CALA SAN VICENTE

INTIMATE BOUTIQUE HOTEL IN TRANQUIL SETTING

In a lovely location right by a small, secluded cove in Cala San Vicente and 200 metres from the resort centre, boutique hotel Hoposa Niu enjoys splendid views over the crystal clear waters and with its relaxed, tranquil ambience is ideal for couples.

A mere 24 modern style guest rooms and junior suites are set over two buildings and feature private balcony. A tasty breakfast is served each morning, there are lunchtime snacks available and the a la carte restaurant offers international and Spanish cuisine and guests can opt to dine al fresco on the terrace to make the most of the wonderful setting overlooking the sea.

The rooftop terrace with a bijou outdoor pool and views over Cala Barques beach is ideal for lazy days in the sun. For active days there are watersports, hiking, cycling and horse riding available locally, with the nearest golf course 10km away.

FEATURES

24 rooms and junior suites. Rooftop swimming pool. A la carte restaurant, bar. Bicycle storage.

OUR EXPERTS SUGGEST...

A sea view

Reserve a comfortable and spacious junior suite in the main hotel and enjoy the beautiful sea views to Cala Barques from your private balcony.

OFFERS AND SAVINGS

Please call us for early booking offers and savings, restrictions apply.

Holiday price band: £ up to £1500pp

Based on 7 nights' duration inclusive of return flights and private transfers (approximately 60 minutes from Palma airport), two adults sharing a lead-in room type on a lead-in board basis. Please refer to page 6 'Price points and star ratings'. For an accurate quote based on latest prices please call our travel experts on freephone 0800 008 7288.

We categorise our price bands into £, ££ and £££.

They are intended only as a price guide where £ is up to £1500 per person, ££ is from £1501 to £3000 per person and £££ is over £3001 per person.



★★★★★ boutique

ONLY ADULTS
LUXURY BOUTIQUE

El Vicenc de la Mar

CALA SAN VICENTE

WONDERFUL VIEWS AND TRANQUILLITY

Set beside the idyllic Cala Molins beach, boutique retreat El Vicenc de la Mar has been designed to harmoniously blend in with its beautiful setting, and with light and airy interiors it exudes a calm and tranquil ambience. A choice of contemporary elegant accommodation range from splendid double rooms to suites with private pool.

The seafood bistro is perfect for long lunches, and in the evenings the excellent El Vicenc Restaurant, led by award-winning chef Santi Taura, presents a gourmet a la carte menu based on traditional island recipes with a unique slant. The multi-level rooftop terrace with a bar and spectacular sea views is the perfect spot for sunbathing, lounging by the pool, and enjoying gourmet snacks and delicious tapas.

The hotel's wellness studio features a serene spa with Japanese garden and a wide range of treatments. The area is fantastic for cycling and the hotel has a Bike Centre. This hotel is exclusively for those aged 12 years or older. A member of Design Hotels.

FEATURES

35 rooms and suites. Rooftop terrace with pool. Two restaurants. Wellness studio, fitness centre. Bike Centre. Cinema room.

OUR EXPERTS SUGGEST... A pool experience

Reserve a privilege room and enjoy a terrace with swim-up access to a shared pool, or indulge in a 17 metre long private pool when staying in one of the suite categories, or for the ultimate in luxury, the Penthouse suite wows with a vast terrace and pool.

OFFERS AND SAVINGS

Please call us for offers and savings.

Holiday price band: £ up to £1500pp

Based on 7 nights' duration inclusive of return flights and private transfers (approximately 60 minutes from Palma airport), two adults sharing a lead-in room type on a lead-in board basis. Please refer to page 6 'Price points and star ratings'. For an accurate quote based on latest prices please call our travel experts on freephone 0800 008 7288.

We categorise our price bands into £, ££ and £££. They are intended only as a price guide where £ is up to £1500 per person, ££ is from £1501 to £3000 per person and £££ is over £3001 per person.



Double room

★★★★★

IDEAL FOR COUPLES

Grupotel Molins

CALA SAN VICENTE

A RELAXING HIDEAWAY

The picturesque resort of Cala San Vicente, approximately 6km from Puerto Pollensa, with its dramatic setting of mountains and palm trees, provides a relaxing location for this popular hotel. Grupotel Molins is wonderfully positioned overlooking a beautiful bay and just across the road from a small, sheltered golden sandy beach.

Guest rooms are comfortably furnished; each carefully positioned to make the most of the fantastic views and natural beauty of the area. Days can be spent relaxing on the beach or enjoying the spa and wellness centre, one of many excellent facilities on offer, whilst evenings can be whiled away on the hotel's terrace.

Couples and families alike will delight in the welcoming atmosphere, wonderful location and high standards of service of this hotel. There are a small number of shops, bars and restaurants close by in this delightful resort.

FEATURES

101 rooms and suites. Outdoor freshwater swimming pool and sun terraces. Spa and wellness centre. Dining room overlooking bay, two bars, seasonal pool bar serving lunch. Evening entertainment twice a week.

OUR EXPERTS SUGGEST... The setting

This hotel makes the most of its location on one of Mallorca's prettiest coves. If you sit on the terrace of the lounge bar in the evening, you can enjoy sea views and the sunset.

OFFERS AND SAVINGS

Please call us for early booking offers and dining upgrades, restrictions apply.

Holiday price band: £ up to £1500pp

Based on 7 nights' duration inclusive of return flights and private transfers (approximately 60 minutes from Palma airport), two adults sharing a lead-in room type on a lead-in board basis. Please refer to page 6 'Price points and star ratings'. For an accurate quote based on latest prices please call our travel experts on freephone 0800 008 7288.

We categorise our price bands into £, ££ and £££.

They are intended only as a price guide where £ is up to £1500 per person, ££ is from £1501 to £3000 per person and £££ is over £3001 per person.

Menorca

Successive changes of fortune have left their mark on Menorca and cultural influences range from Moorish to colonial, but it's the unspoilt coastline, the beaches and the unhurried pace of life which ensure a relaxed holiday. Menoreans are renowned for their openness, generosity and, as one would expect, their hospitality.



Cala Pregonda



Ciutadella

Menorca's capital, Mahon, is a fascinating place to explore. There are the remains of the old city's walls, beautiful churches, colourful Spanish mansions, Georgian town houses and a picturesque market. Just outside Mahon, Es Castell is a characterful town with a colonial heritage and a pair of charming harbours. On one of the southerly most points of the coast is popular Punta Prima, its beach a clean sweep of blue flag status white sand, with warm, shallow waters. Santo Tomas is a quiet and relaxing seaside town. Sheltered and horseshoe shaped Cala Galdana book-ended by sheer, limestone cliffs bedecked with fragrant pines, is widely considered to be the prettiest bay in the whole of Menorca. Ciutadella boasts a picturesque yacht-filled harbour, a stylish waterfront café culture and an engaging old quarter of narrow streets filled with shops, and an appealing historic centre.

The whole of Menorca's coastline has been declared a protected area. This is apparent in the unspoilt countryside, the abundance of soft sand beaches, and the coves which are dotted about the island. Menorca offers areas of natural beauty which are almost unsurpassed anywhere else in the Mediterranean.

Horse-riding is particularly good on Menorca with numerous riding centres and a variety of countryside tracks and bridleways. The island offers a wide network of cycling routes through rolling countryside and quiet country lanes as well as purpose built mountain bike trails along its rugged coastline. Walks through the S'Albufeira des Grau Natural Park and Algendar Gorge and along the coastal path, Cami de Cavalls are a delight. Menorca's only golf course, Golf Son Parc, is set in picturesque surroundings in the north. Clear waters and high visibility make for good snorkelling and diving.

Discover more

To add to your holiday enjoyment, our travel experts can organise a two or multi-centre holiday. Here we've highlighted a couple of suggestions. However, you can combine any of our featured hotels, and, as long as there's a flight or a ferry available between your chosen islands, or the mainland and your chosen islands, we can arrange everything for you.

BARCELONA AND MENORCA

Enjoy wildly differing aspects of Spanish life. One of the world's most enchanting cities, Barcelona offers beaches and sea as a captivating backdrop to architectural gems from Gothic to Gaudi, world class museums and galleries, an Olympic park, a peerless cathedral, a world famous boulevard and one of the most extensive medieval cities in Europe. Immerse yourself in the rich culture, superb architecture, Michelin dining and enticing nightlife. Then fly to Menorca to relax on sandy beaches and delight in the joie de vivre in the typically Menorcan seaside holiday town of Cala Galdana.

The One Barcelona is located close to the superb shops of Passeig de Gracia and is just a 15-minute stroll from both Placa de Catalunya and La Sagrada Familia. Parc Guell is in the vicinity too. On Menorca, Melia Cala Galdana enjoys spectacular sea and bay views from its beautiful cove setting. The high cliffs and aromatic pine forests of the Algendar Gorge create a dramatic backdrop to the resort of Cala Galdana which is divided by the Algendar River.

OUR EXPERTS SUGGEST Spend 3 nights at The One Barcelona, Barcelona, page 35 of our City Breaks e-brochure, and 4 nights at Melia Cala Galdana, Menorca, page 77.



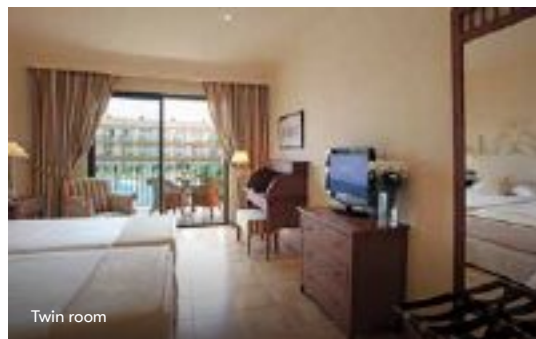
We're delighted to highlight a couple of experiences to enhance your visit to Menorca. Simply confirm at the time of booking, prior to travelling or once in resort. Alternatively ask our travel experts for further information or for details of the other experiences we offer.

YACHT SAILING

What better way to enjoy the water and delightful coast of Menorca? Discover the unspoilt beaches, bays and coves of northern Menorca. Swim in crystal-clear turquoise waters just metres from idyllic, secluded beaches which can only be reached from the sea.

JEEP SAFARI

Enjoy the outstanding scenery of an island brimming with contrasts. Scenic landscapes include steep cliffs and gorges, warm turquoise waters leading to unspoiled coves, and a wide variety of fauna and flora. See Menorca's rustic treasures along rural tracks by 4x4 vehicle.



★★★★★

La Quinta Menorca by PortBlue Boutique CALA'N BOSCH, SON XORIGUER

COLONIAL STYLE WITH FIVE STAR FACILITIES

Located between the two sandy beaches of Son Xoriguer and Cala'n Bosch, with the closest beach a mere 300 metres away, La Quinta Menorca by PortBlue Boutique is a delightful hotel. Situated nine kilometres from Ciutadella, the former capital of Menorca, the hotel enjoys the prestige of being the island's first five star luxury hotel.

Colonial style architecture with smart modern decoration using traditional materials of wood, terracotta, wrought iron and marble, blend with all the services of a grand hotel. Facing the attractive swimming pool area, the luxurious and elegant guest rooms offer every comfort.

Delightfully exquisite Mediterranean cuisine is created by the masterchef in Son Xoriguer Restaurant, complemented by the finest wines recommended by the head waiter. An excellent spa and wellness centre complete the facilities of this exclusive resort hotel. This hotel is exclusively for adults aged 16 years or older.

FEATURES

82 rooms and suites. Junior suites have separate shower and jacuzzi bath. Outdoor pool and heated indoor pool. Spa and wellness centre. Restaurant including a la carte and weekly gala dinner. Bar serving drinks by the pool, piano bar and lounge area, weekly entertainment. Daily courtesy bus to Ciutadella.

ONLY ADULTS
HOTEL LOYALTY
RECOMMENDED SPA

OUR EXPERTS SUGGEST... The delicious cuisine

This luxury hotel uses the finest local produce in its restaurant. Start the day in style – you'll find it hard to resist the fresh breakfast pancakes. Add the half board option and you can enjoy a nightly four course dinner and a Saturday gala dinner.

OFFERS AND SAVINGS

Please call us for early booking offers and savings, dining upgrades, complimentary extras and honeymoon extras including a complimentary room upgrade, restrictions apply.

Holiday price band: £ up to £1500pp

Based on 7 nights' duration inclusive of return flights and private transfers (approximately 60 minutes from Mahon airport), two adults sharing a lead-in room type on a lead-in board basis. Please refer to page 6 'Price points and star ratings'. For an accurate quote based on latest prices please call our travel experts on freephone 0800 008 7288.

We categorise our price bands into £, ££ and £££. They are intended only as a price guide where £ is up to £1500 per person, ££ is from £1501 to £3000 per person and £££ is over £3001 per person.



Swim-up rooms



Privilege one bedroom suite

★★★★

Zafiro Menorca

CALA'N BOSCH

GREAT FACILITIES FOR FAMILIES

Located in Cala'n Bosch on the east coast of the island, Zafiro Menorca is a short walk from the wide, sandy beach and the pretty marina and offers an array of leisure facilities and entertainment for all ages. There is a small selection of bars, restaurants and a supermarket in the near vicinity.

Modern and bright one bedroom apartment-style suites comprise a sitting room and kitchenette with fridge, kettle and microwave, and feature a private balcony or terrace.

International buffet style meals are served in the light-filled Caprice Restaurant with snacks and lunch available at the pool bar and there's evening entertainment in the bar. There is a range of activities and sports amenities for all ages, a spacious freeform outdoor pool, plus an indoor pool and jacuzzi. Youngsters are well catered for with a playground, mini club, special menu at the pool bar and their own splash pool complete with pirate ship and slides.

FEATURES

172 suites. Outdoor pool, children's pool, indoor pool. Restaurant and two bars. Spa with sauna, gym. Various sports. Children's club, teen club, playground.

IDEAL FOR FAMILIES
OPTIONAL ALL INCLUSIVE

OUR EXPERTS SUGGEST... A suite upgrade

Upgrade to a one bedroom swim-up suite and enjoy direct access to a shared pool from your terrace, or book a one bedroom garden suite and benefit from your own private garden with hammock and sun loungers.

OFFERS AND SAVINGS

Please call us for early booking offers, dining upgrades and optional all inclusive details, restrictions apply.

Holiday price band: £ up to £1500pp

Based on 7 nights' duration inclusive of return flights and private transfers (approximately 60 minutes from Mahon airport), two adults sharing a lead-in room type on a lead-in board basis. Please refer to page 6 'Price points and star ratings'. For an accurate quote based on latest prices please call our travel experts on freephone 0800 008 7288.

We categorise our price bands into £, ££ and £££.

They are intended only as a price guide where £ is up to £1500 per person, ££ is from £1501 to £3000 per person and £££ is over £3001 per person.



Double room with balcony

★★★★

IDEAL FOR COUPLES

Hotel Port Ciutadella

CIUTADELLA

A MODERN AND TASTEFUL SEAFRONT HOTEL

The four star Hotel Port Ciutadella is located on the west coast of the island in the charming old town of Ciutadella which was formerly the capital of Menorca.

The hotel enjoys a seafront location on a headland close to the Platja Gran beach, 200 metres away, and is within easy walking distance of the picturesque town centre with its winding streets, busy harbour, shops, restaurants and nightlife.

Well-equipped guest rooms and suites are tastefully furnished, modern and feature a balcony. There is an outdoor swimming pool and children's pool, as well as a spa with indoor heated swimming pool and a range of massage and beauty treatments. The restaurant features international dishes and show cooking and Sa Galera snack bar is ideal for cocktails and light lunches.

FEATURES

94 rooms and suites. Outdoor pool, children's pool. Spa, payable locally, with indoor heated swimming pool, jacuzzi, sauna, Turkish bath. Restaurant, lobby bar, snack bar.

OUR EXPERTS SUGGEST... The flexible dining concept

The hotel operates a flexible dining concept so you could book half board for all of your stay, or for just a few nights to give you the opportunity to try the local restaurants on other nights.

OFFERS AND SAVINGS

Please call us for offers and savings.

Holiday price band: £ up to £1500pp

Based on 7 nights' duration inclusive of return flights and private transfers (approximately 60 minutes from Mahon airport), two adults sharing a lead-in room type on a lead-in board basis. Please refer to page 6 'Price points and star ratings'. For an accurate quote based on latest prices please call our travel experts on freephone 0800 008 7288.

We categorise our price bands into £, ££ and £££.

They are intended only as a price guide where £ is up to £1500 per person, ££ is from £1501 to £3000 per person and £££ is over £3001 per person.



Premium room Cala Galdana view

★★★★★

IDEAL FOR FAMILIES

Melia Cala Galdana

CALA GALDANA

A FABULOUS BEACHFRONT LOCATION

Set in one of Menorca's most beautiful coves, Melia Cala Galdana enjoys spectacular views of the bay from its restaurants, various terraces and most of the guest rooms. The reception area features modern décor and stylish furnishings with well-appointed guest rooms tastefully decorated.

Leisure facilities include a large outdoor swimming pool, a range of land-based sports amenities and watersports, and live music in the evenings. In addition, for younger guests there is a children's pool, mini club and playground.

Dining options include al fresco on the terrace at the Mosaico restaurant in high season, or excellent a la carte specialities at Casa Nostra, whilst lunches and informal dinners can be enjoyed at the seasonal Cape Nao Beach Club. The resort centre with a selection of shops and cafés is a mere 400 metres away.

FEATURES

340 rooms and suites. Outdoor pool, children's pool. Watersports. Main restaurant, a la carte restaurant, lobby bar, seasonal beach club & restaurant. Children's club for under four years, mini club from five to 12 years, playground.

OUR EXPERTS SUGGEST... The Level service

Book a room in the exclusive The Level part of the hotel and benefit from a dedicated restaurant on the eighth floor with sea views, an exclusive lounge with drinks and terrace overlooking Cala Galdana and adult only pool complete with pool concierge service.

OFFERS AND SAVINGS

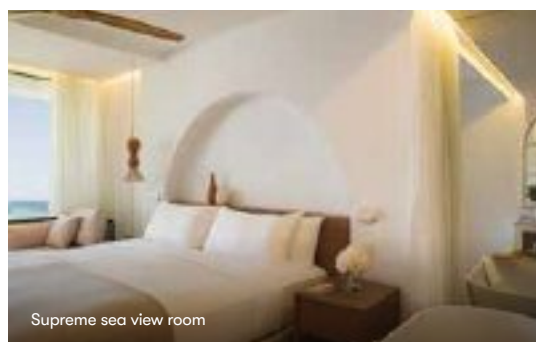
Please call us for early booking and family offers, dining upgrades and honeymoon extras, restrictions apply.

Holiday price band: £ up to £1500pp

Based on 7 nights' duration inclusive of return flights and private transfers (approximately 45 minutes from Mahon airport), two adults sharing a lead-in room type on a lead-in board basis. Please refer to page 6 'Price points and star ratings'. For an accurate quote based on latest prices please call our travel experts on freephone 0800 008 7288.

We categorise our price bands into £, ££ and £££.

They are intended only as a price guide where £ is up to £1500 per person, ££ is from £1501 to £3000 per person and £££ is over £3001 per person.



★★★★★ superior

LUXURY HOTEL
IDEAL FOR COUPLES

Villa Le Blanc a Gran Melia Hotel SANTO TOMAS

A TRANQUIL BEACHFRONT SETTING

In an enviable location between the beaches of Santo Tomas and San Adeodato, Villa Le Blanc, a Gran Melia Hotel sets new standards for luxury in Menorca and offers excellent service and amenities in a tranquil setting.

Light and airy guest rooms and suites are stylish and tastefully furnished. The gastronomic offer focuses on local, seasonal produce, showcasing the very best of Menorcan cuisine and a partnership with Ciutadella's renowned S'Amarador seafood restaurant makes this property a foodie paradise. At Cru, you'll find the best local ingredients from land and sea, and the famous Mahon cheeses, accompanied by signature cocktails, beers and vermouths.

There is a lovely outdoor swimming pool surrounded by sun terraces and loungers, as well as relaxing Balinese-style sun beds, payable locally. With a spa offering the latest beauty and wellness treatments and a state of the art fitness centre, there is no better place to look after your body and soul. A member of The Leading Hotels of the World.

FEATURES

159 rooms and suites. Outdoor pool. Three restaurants, rooftop lounge bar. Spa, gym.

OUR EXPERTS SUGGEST... Great food experiences

Tuck into delicious grilled dishes and tantalising paellas at Nivi. At Cru order signature cocktails alongside the freshest of fish and shellfish, and celebrated Mahon cheeses. S'Amarador focuses on delectable Menorcan a la carte cuisine using fine local produce.

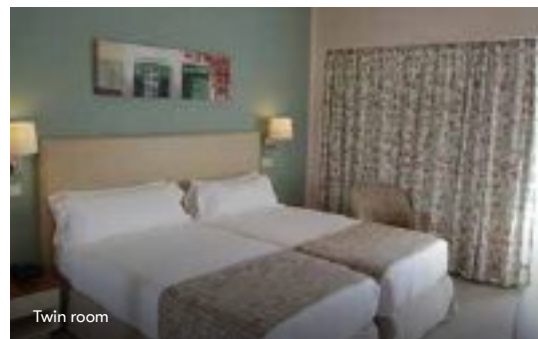
OFFERS AND SAVINGS

Please call us for early booking and long stay offers, honeymoon extras including a complimentary room upgrade, restrictions apply.

Holiday price band: £ up to £1500pp

Based on 7 nights' duration inclusive of return flights and private transfers (approximately 30 minutes from Mahon airport), two adults sharing a lead-in room type on a lead-in board basis. Please refer to page 6 'Price points and star ratings'. For an accurate quote based on latest prices please call our travel experts on freephone 0800 008 7288.

We categorise our price bands into £, ££ and £££. They are intended only as a price guide where £ is up to £1500 per person, ££ is from £1501 to £3000 per person and £££ is over £3001 per person.



★★★★

IDEAL FOR COUPLES

Hotel Santo Tomas

SANTO TOMAS

A PEACEFUL BEACHFRONT LOCATION

On the island's south coast and alongside one of Menorca's longest beaches, the peaceful Hotel Santo Tomas offers attentive service and delightful surroundings and is a popular hotel which sees many guests returning year after year.

The main buffet restaurant serves a selection of national and international dishes, and next to the seafront promenade the Malibu beach restaurant is a pleasant spot for a light lunch or a coffee. With its relaxed ambience and a terrace facing the pool, Bar Ficus is the ideal place for a cool cocktail or chilled drink.

Set in the well-manicured gardens is an attractive and spacious outdoor pool with views of the sea, and the hotel enjoys direct access to the golden sands of Playa Santo Tomas. There is a heated indoor pool, jacuzzi, steam bath and sauna at the wellness centre, as well as a selection of spa, beauty and massage treatments.

FEATURES

99 rooms and suites. Outdoor pool. Wellness centre. Small gym, indoor heated pool. Restaurant, beach restaurant, bar.

OUR EXPERTS SUGGEST... A beach suite

With lovely sea views and direct access to the beach, pool and gardens, the beach suites feature a bedroom with sitting area, a kitchenette, and a balcony or private garden and jacuzzi. Some have a separate living area.

OFFERS AND SAVINGS

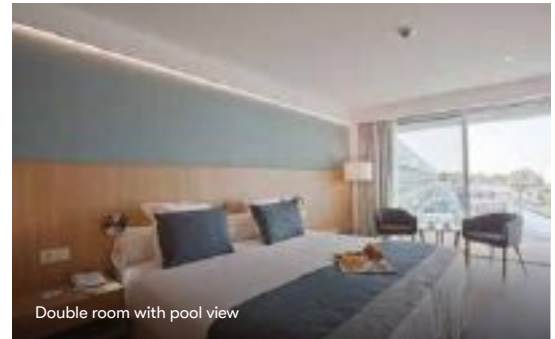
Please call us for early booking offers and savings, restrictions apply.

Holiday price band: £ up to £1500pp

Based on 7 nights' duration inclusive of return flights and private transfers (approximately 30 minutes from Mahon airport), two adults sharing a lead-in room type on a lead-in board basis. Please refer to page 6 'Price points and star ratings'. For an accurate quote based on latest prices please call our travel experts on freephone 0800 008 7288.

We categorise our price bands into £, ££ and £££.

They are intended only as a price guide where £ is up to £1500 per person, ££ is from £1501 to £3000 per person and £££ is over £3001 per person.



Double room with pool view

★★★★

IDEAL FOR COUPLES

Hotel 55 Santo Tomas

SANTO TOMAS

IMPRESSIVE POOL LANDSCAPE

Hotel 55 Santo Tomas is a modern resort hotel located in a quiet residential area just 250 metres from Santo Tomas beach on the island's south coast.

Comfortable and modern guest rooms and suites have been designed for maximum light with views from the glass partitioned bathroom through the bedroom and out onto the glass fronted balcony. The hotel restaurant serves a variety of national and international dishes and the poolside bar features a selection of snacks.

There is a spacious outdoor swimming pool, an outdoor sports area and a full service spa with an array of massage and beauty treatments as well as an indoor heated pool and a fitness centre.

FEATURES

165 rooms and suites. Outdoor swimming pool. Spa with massage and beauty treatments, indoor heated pool, jacuzzi, sauna, steam bath, fitness centre. Sports area. Restaurant, lobby bar, poolside snack bar.

OUR EXPERTS SUGGEST... Easy pool access

Reserve an adult only swim-up suite on the ground floor of the hotel offering ample space at 60m². There's a spacious bedroom and separate living room and a private terrace with loungers and easy access to the shared pool.

OFFERS AND SAVINGS

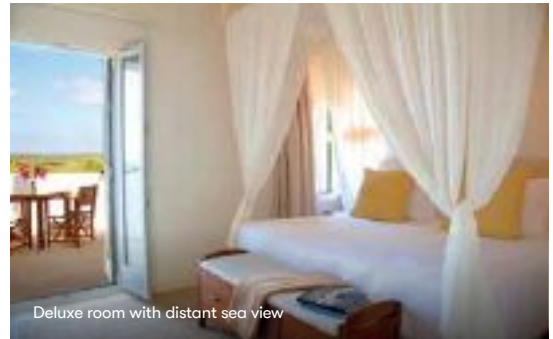
Please call us for early booking offers and dining upgrades, restrictions apply.

Holiday price band: £ up to £1500pp

Based on 7 nights' duration inclusive of return flights and private transfers (approximately 30 minutes from Mahon airport), two adults sharing a lead-in room type on a lead-in board basis. Please refer to page 6 'Price points and star ratings'. For an accurate quote based on latest prices please call our travel experts on freephone 0800 008 7288.

We categorise our price bands into £, ££ and £££.

They are intended only as a price guide where £ is up to £1500 per person, ££ is from £1501 to £3000 per person and £££ is over £3001 per person.



Deluxe room with distant sea view

★★★★ superior boutique

BOUTIQUE STYLE
IDEAL FOR COUPLES

Torrabenc Menorca

ALAIOR, CALA'N PORTER

CHARMING AND RURAL BOUTIQUE HOTEL

Beautifully converted from a traditional Menorcan finca into a luxury boutique hotel, Torrabenc Menorca stands on a small hill, close to the village of Alaior on the south coast, and surrounded by farmland and vineyards it enjoys views across to the Mediterranean Sea. Comprising a cluster of whitewashed farm buildings this tranquil, rural retreat has retained its heritage charm and features minimalist styled guest rooms, combining limestone, chestnut wood and fabrics in neutral tones to great effect.

Exquisitely prepared cuisine using the finest locally sourced produce is served in the rustic restaurant, which also features a barbecue grill area offering wonderful charcoal cooked meat, fish and vegetables which can be enjoyed al fresco on the terrace, or in the delightful garden.

A saltwater lap pool is located in the garden where there are plenty of loungers for relaxing, and there's a wellness area with gym and yoga studio, whilst the nearest beach can be found in Cala'n Porter, around a 10 minute drive away.

FEATURES

27 rooms and suites. Outdoor saltwater lap pool. Wellness area offering beauty treatments, massages, gym, yoga and pilates classes. Restaurant serving traditional island cuisine.

OUR EXPERTS SUGGEST... A deluxe room

Upgrade to a deluxe room located at the front of the hotel and enjoy spacious and bright spaces, with a private terrace and views to the vineyards and on to the Mediterranean in the distance.

OFFERS AND SAVINGS

Please call us for early booking offers and honeymoon extras including a complimentary room upgrade, restrictions apply.

Holiday price band: £ up to £1500pp

Based on 7 nights' duration inclusive of return flights and private transfers (approximately 20 minutes from Mahon airport), two adults sharing a lead-in room type on a lead-in board basis. Please refer to page 6 'Price points and star ratings'. For an accurate quote based on latest prices please call our travel experts on freephone 0800 008 7288.

We categorise our price bands into £, ££ and £££.

They are intended only as a price guide where £ is up to £1500 per person, ££ is from £1501 to £3000 per person and £££ is over £3001 per person.



Junior suite with swimming pool

★★★★★

Barceló Nura

BINIANCOLLA

TRANQUIL AND RELAXING

Located 250 metres from a small cove in the peaceful and traditional village of Biniancolla on the island's south coast, recently opened Barceló Nura is a modern, tranquil and relaxed hotel. Low-rise buildings house a variety of spacious and elegant guest rooms and suites with private balcony or terrace; some have sea views, and some enjoy a semi-private pool area.

Local produce is used to create tasty dishes served at the buffet restaurant and the Sa Tanca a la carte restaurant, whilst the lobby bar offers a menu of tapas and snacks for lunch. The hotel's laid-back rooftop bar, B-Heaven, tempts with wonderful sea views and sunset watching alongside its list of exotic cocktails and live music.

Three inviting outdoor pools ensure plenty of space for swimming and sunbathing on adjacent terraces, the wellness area has a heated pool, spa, sauna and a fitness studio, and Punta Prima beach is 1.5km away.

FEATURES

128 rooms and suites. Three outdoor pools. Two restaurants, bar. Rooftop terrace. Wellness area with heated pool and spa.

IDEAL FOR COUPLES
OPTIONAL ALL INCLUSIVE

OUR EXPERTS SUGGEST... A shared pool

Book a spacious junior suite with king size bed and a single sofa bed, and an open-concept bathroom with rainfall shower. The terrace with table and chairs lead onto a semi-private pool area with loungers and an umbrella.

OFFERS AND SAVINGS

Please call us for early booking offers and optional all inclusive details, restrictions apply.

Holiday price band: £ up to £1500pp

Based on 7 nights' duration inclusive of return flights and private transfers (approximately 20 minutes from Mahon airport), two adults sharing a lead-in room type on a lead-in board basis. Please refer to page 6 'Price points and star ratings'. For an accurate quote based on latest prices please call our travel experts on freephone 0800 008 7288.

We categorise our price bands into £, ££ and £££. They are intended only as a price guide where £ is up to £1500 per person, ££ is from £1501 to £3000 per person and £££ is over £3001 per person.



Prestige suite swim-up

★★★★★

IDEAL FOR FAMILIES
RECOMMENDED SPA

Insotel Punta Prima Prestige Suites & Spa

PUNTA PRIMA

ENVIABLE SEAFRONT SETTING

In a privileged seafront setting and a 300 metre stroll from the beach, Insotel Punta Prima Prestige Suites & Spa comprises a cluster of traditional Menorcan style two storey buildings featuring luxurious and spacious suites set amidst well-tended, landscaped gardens. All suites have been specially designed to provide the utmost in elegance and comfort with en-suite bathroom and separate shower room, lounge and terrace with garden or sea views.

A wide variety of facilities are available as guests may use amenities at neighbouring Insotel Punta Prima Resort & Spa, including a selection of sports, leisure and children's facilities such as baby, mini, maxi and teen clubs and a splash park.

Additionally, guests benefit from Prestige Suites' own reception area, and exclusive pool with pool bar. There is also a main restaurant and a la carte gourmet restaurant with a fantastic sea view terrace and al fresco dining.

FEATURES

62 suites, some with kitchenette. Outdoor pool, children's pool. Prestige Spa in the main resort with massage and beauty treatments, sauna, steam room, hydromassage pool. Fitness centre. Four restaurants, bars. Children's facilities in main resort including clubs, playground, pre-bookable baby amenities.

OUR EXPERTS SUGGEST...

A suite with rooftop terrace

You will quickly feel at home in these luxurious suites sleeping two adults and two children. They have large flat-screen TVs and a private roof terrace with comfortable daybed and a jacuzzi.

OFFERS AND SAVINGS

Please call us for early booking offers and savings, dining upgrades and complimentary honeymoon extras, restrictions apply.

Holiday price band: £ up to £1500pp

Based on 7 nights' duration inclusive of return flights and private transfers (approximately 30 minutes from Mahon airport), two adults sharing a lead-in room type on a lead-in board basis. Please refer to page 6 'Price points and star ratings'. For an accurate quote based on latest prices please call our travel experts on freephone 0800 008 7288.

We categorise our price bands into £, ££ and £££.

They are intended only as a price guide where £ is up to £1500 per person, ££ is from £1501 to £3000 per person and £££ is over £3001 per person.



Superior room with sea view

★★★★

Barceló Hamilton Menorca

ES CASTELL

PERFECTLY LOCATED OVERLOOKING MAHON

Enjoying a privileged and tranquil location over Es Castell seafront esplanade in the Bay of Mahon, stylish Barceló Hamilton Menorca combines avant-garde design with a good range of facilities. As well as a bijou outdoor pool, there is a plunge pool, a panoramic rooftop deck with daybeds and six hot tubs, a wellness centre, and a fitness centre.

Attractive, city style guest rooms and suites feature a modern open plan style bathroom and some have balconies. A selection of regional and international dishes and live show cooking are highlights of the main restaurant.

From the hotel it's a five minute walk to restaurants, bars and shops, 500 metres to the fishing harbour of Cales Fonts, 3km to Menorca's capital, Mahon, and 9km to Cala Mesquida cove. This hotel is exclusively for adults aged 17 years or older.

FEATURES

160 rooms and suites. Outdoor pool and plunge pool. Wellness centre with beauty treatments, sauna, hammam, sensation showers, fitness room. Main restaurant, Blue Sky bar, poolside snack bar, lobby bar. Daytime activities and evening entertainment.

ONLY ADULTS
OPTIONAL ALL INCLUSIVE

OUR EXPERTS SUGGEST... The all inclusive option

Choose the all inclusive option and enjoy breakfast and dinner with show cooking, a three course a la carte lunch and daytime snacks. In addition, tea, coffee, soft and select alcoholic drinks are available from 10.30am to midnight.

OFFERS AND SAVINGS

Please call us for early booking offers and savings, all inclusive upgrades and honeymoon extras including a complimentary room upgrade, restrictions apply.

Holiday price band: £ up to £1500pp

Based on 7 nights' duration inclusive of return flights and private transfers (approximately 20 minutes from Mahon airport), two adults sharing a lead-in room type on a lead-in board basis. Please refer to page 6 'Price points and star ratings'. For an accurate quote based on latest prices please call our travel experts on freephone 0800 008 7288.

We categorise our price bands into £, ££ and £££. They are intended only as a price guide where £ is up to £1500 per person, ££ is from £1501 to £3000 per person and £££ is over £3001 per person.



Double room with balcony

★★★★

IDEAL FOR COUPLES

Hotel Port Mahon

MAHON

POPULAR RETREAT

Situated in a residential area overlooking Mahon's attractive harbour, Hotel Port Mahon is just five minutes' stroll from the centre of town.

The architectural history of the capital is reflected in the hotel's colonial style, well-appointed guest rooms feature modern décor and are charmingly decorated, with junior suites having a sitting area. The delightful restaurant and terrace are ideal for al fresco dining.

The pleasant swimming pool area boasts a sun terrace with unique views over the harbour and provides a popular retreat for visitors. The harbour with its seafront promenade lined with boutiques and excellent fish restaurants is just a few minutes' walk from the hotel: the shortest route involves lift access and the nearest beach is approximately seven kilometres away.

FEATURES

82 rooms and suites. Outdoor pool. Restaurant with terrace area. Bar serving drinks and light snacks, piano bar and comfortable lounge, subject to seasonal demand. Regular live music.

OUR EXPERTS SUGGEST...

A suite stay

Upgrade to a suite with sea view for that extra bit of space. Well-appointed, the open plan layout leads to a private terrace with unbeatable views of Mahon harbour and the sea.

OFFERS AND SAVINGS

Please call us for dining upgrades.

Holiday price band: £ up to £1500pp

Based on 7 nights' duration inclusive of return flights and private transfers (approximately 20 minutes from Mahon airport), two adults sharing a lead-in room type on a lead-in board basis. Please refer to page 6 'Price points and star ratings'. For an accurate quote based on latest prices please call our travel experts on freephone 0800 008 7288.

We categorise our price bands into £, ££ and £££.

They are intended only as a price guide where £ is up to £1500 per person, ££ is from £1501 to £3000 per person and £££ is over £3001 per person.

Ibiza

Known as the White Isle, Ibiza is a feast for all the senses; stunning beaches, undiscovered coves, sophisticated restaurants and designer boutiques, whitewashed villages, the world heritage site of Dalt Vila, as well as a laid-back ambience and world-famous all-night clubbing.



Backed by pine covered hills and overlooked by a whitewashed, fortified 16th century church, attractive Santa Eulalia sits in a lovely crescent shaped bay. The town is charming, renowned for its wide choice of fine restaurants, burgeoning art scene and marina. Set in a pretty bay just north of Ibiza Town, Talamanca offers a stretch of beautifully soft, gently shelving sand. Calm, clear waters make it especially popular with families. A long promenade is backed by beach bars and restaurants.

Playa d'en Bossa offers soft golden sands, watersports aplenty, many restaurants and bars, a waterpark, and buzzing nightlife. By day, wander through the cobbled streets up to the cathedral of Ibiza Old Town. By night, the beautiful streets are brought alive by the partygoers; it's worth visiting to participate or spectate. In the old fisherman's quarter, below Dalt Vila, there are shops and bars and the port is home to millionaires' yachts and a selection of excellent fish restaurants. The nearest beaches include Talamanca and the expansive Playa d'en Bossa. Ibiza has myriad fabulous beaches. Families enjoy the beaches at Talamanca, Cala Tarida and Cala Bassa and watersports enthusiasts love Cala Vadella and Portinatx. For tranquillity and seclusion, hunt out the beaches at Cala Carbo, Cala Codolar and Cala Moli, and for the best sunsets, head for Benirras, Cala Conta and Cala d'Hort.



Portinatx



Cala d'Hort

On Ibiza there are cycling tours for enthusiasts and electric bikes for a little help up the steeper hills. The island offers a vast selection of watersports including jet skiing, kayaking, stand up paddle boarding and parasailing. There is also tennis, horse-riding, go-karting and guided rock climbing. Golf Ibiza offers a 9 and 18 hole course suitable for golfers of all abilities.

Discover more

To add to your holiday enjoyment, our travel experts can organise a two or multi-centre holiday. Here we've highlighted a couple of suggestions. However, you can combine any of our featured hotels, and, as long as there's a flight or a ferry available between your chosen islands, or the mainland and your chosen islands, we can arrange everything for you.

MADRID AND IBIZA

With excellent flight connections between the two, combine a few days in the Spanish capital with time spent on the White Island. Culturally and historically exciting, Madrid boasts superb art collections, splendid architecture, a fantastic foodie culture and a buzzing nightlife. And, unusually for a capital city, there's a considerable amount of delightful relaxing parkland and green space.

Centrally located on Plaza de la Independencia, overlooking the Puerta de Alcala and with views of the city's major green space Retiro Park, boutique hotel Hospes Puerta de Alcala Madrid is set in a beautifully historic building. On Ibiza, attractive Santa Eulalia sits in a lovely crescent shaped bay. Its east coast setting boasts a sophisticated marina filled with luxury yachts, a sweeping man-made sandy beach and a seafront promenade lined with shops, lively bars and a great choice of restaurants. The town is charming, renowned for its gastronomy, and features numerous art galleries. The sophisticated Aguas de Ibiza Grand Luxe Hotel, run by the entrepreneurial Torres family, is situated 50 metres from a small beach and a five minute walk from Santa Eulalia town centre.

OUR EXPERTS SUGGEST Spend 3 nights at Hospes Puerta de Alcala, Madrid, and 4 nights at Aguas de Ibiza Grand Luxe Hotel, Ibiza, pages 88 and 89.



Retiro Park, Madrid



Margaritas Islands

We're delighted to highlight a couple of experiences to enhance your visit to Ibiza. Simply confirm at the time of booking, prior to travelling or once in resort. Alternatively ask our travel experts for further information or for details of the other experiences we offer.

JET SKI TO MARGARITAS ISLANDS

Known as Ses Margalides, these islands, west of Ibiza, are renowned for snorkelling, scuba and jet skis. The bridgelike formation of Sa Foradada, the larger of the two islands, allows jet skiers to ride underneath the island.

PRIVATE BOAT CHARTER

Visit some of the best beaches of Ibiza's west coast on your own private boat. Swim in the crystal-clear waters off Cala Bassa. Visit Sa Conillera and s'Espartar before enjoying the sunset at San Antonio's renowned Café Mambo.



★★★★★

Aguas de Ibiza Grand Luxe Hotel

SANTA EULALIA

CHIC LUXURY IN A GREAT LOCATION

The sophisticated Aguas de Ibiza Grand Luxe Hotel, run by the entrepreneurial Torres family, is situated 50 metres from a small beach and a five minute walk from Santa Eulalia town centre. Every aspect of the hotel has been carefully thought out with eco-friendly touches and use of local materials to reflect Ibiza's beauty. It has four outdoor swimming pools and a Revival Spa by Clarins Wellness Club offering a superb range of pre-bookable treatments and well-being programmes.

Chic guest rooms boasting sea views are elegant, contemporary, and feature the latest in-room technology; for ultimate privacy, book Cloud 9 rooms on the exclusive fourth floor.

Dining options range from Alabastro serving healthy Mediterranean and local cuisine to Maymanta offering authentic Peruvian cuisine by chef Omar Malpartida, with panoramic views of Santa Eulalia from the rooftop terrace. A member of Small Luxury Hotels of the World.

YOUR ROOM OPTIONS

Corner suite pool, garden or mountain view

Contemporary and stylishly furnished corner suites boast unobstructed views and feature twin or king size bed, comfortable living area and private terrace or balcony.

Cloud 9 suite sea view For the ultimate in privacy these impressive suites, located on the exclusive fourth floor, are beautifully appointed in a contemporary Mediterranean style with exclusive furnishings and comprise a bedroom, living area and a private terrace with wonderful sea views.



Premier room



Grand corner suite

IDEAL FOR COUPLES

FEATURES

144 rooms and suites, some with external bathtub. Four outdoor pools and rooftop lounge pool, minimum 14 years. Revival Spa by Clarins Wellness Club. Restaurants.

OFFERS AND SAVINGS

Please call us for early booking and free night offers, honeymoon extras including a complimentary room upgrade, restrictions apply.

Holiday price band: £ up to £1500pp

Based on 7 nights' duration inclusive of return flights and private transfers (approximately 35 minutes from Ibiza airport), two adults sharing a lead-in room type on a lead-in board basis. Please refer to page 6 'Price points and star ratings'. For an accurate quote based on latest prices please call our travel experts on freephone 0800 008 7288.

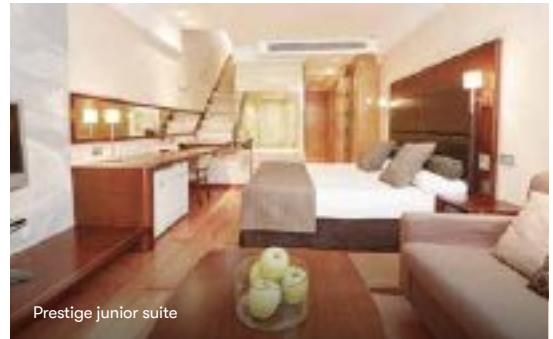
We categorise our price bands into £, ££ and £££. They are intended only as a price guide where £ is up to £1500 per person, ££ is from £1501 to £3000 per person and £££ is over £3001 per person.

OUR EXPERTS SUGGEST...

A premier room

An Ibiza style room with king size bed, a large private terrace and contemporary design elements like copper and limestone on the wall, and stone pebble floors in the spacious bathroom featuring bathtub and a separate shower.





Prestige junior suite

★★★★★

RECOMMENDED SPA

Inotel Fenicia Prestige Suites & Spa

SANTA EULALIA

MODERN AND ELEGANT IN A SEAFRONT SETTING

Located on the banks of the Santa Eulalia River and with the beach a short five minute stroll away, five star Inotel Fenicia Prestige Suites & Spa enjoys an enviable setting and is ideal for those in search of peace and quiet.

The well-appointed guest accommodation is modern and stylish. Dining choices include a main restaurant with show cooking and three a la carte restaurants including La Vinoteca with superb Mediterranean gourmet cuisine, Monsoon with a fusion of Oriental flavours and poolside Tanit tempting with local specialities.

The palm-shaded pool area complete with bar is a delight, and immaculately tended gardens surround the hotel. Children can enjoy their own pool and a seasonal mini club, grown-ups can indulge in a range of therapies and treatments as well as a fabulous thermal area at the extensive Prestige Spa. Additionally, there are two golf courses within 6km of the hotel.

FEATURES

172 rooms and suites. Outdoor pool, children's pool. Prestige Spa with treatments, outdoor hydro-massage pool, indoor dynamic pool, sauna, steam rooms, ice fountain, mud baths, fitness centre. Main restaurant, three a la carte restaurants, pool bar. Children's club from four to 12 years, seasonal.

OUR EXPERTS SUGGEST... A Prestige stay

A Prestige junior suite set over two floors offers 80m² of space with king size bed and sitting area and also boasts a furnished balcony, distant sea views and a private rooftop terrace with open air jacuzzi and daybeds.

OFFERS AND SAVINGS

Please call us for early booking offers and complimentary honeymoon extras, restrictions apply.

Holiday price band: £ up to £1500pp

Based on 7 nights' duration inclusive of return flights and private transfers (approximately 40 minutes from Ibiza airport), two adults sharing a lead-in room type on a lead-in board basis. Please refer to page 6 'Price points and star ratings'. For an accurate quote based on latest prices please call our travel experts on freephone 0800 008 7288.

We categorise our price bands into £, ££ and £££. They are intended only as a price guide where £ is up to £1500 per person, ££ is from £1501 to £3000 per person and £££ is over £3001 per person.



Swim-up, pool view

★★★★

IDEAL FOR COUPLES

Nativo Hotel Ibiza

SANTA EULALIA

LAID-BACK AND RELAXED AMBIENCE

The bohemian, boutique style Nativo Hotel Ibiza offers a warm and welcoming ambience. Interiors are chic and quirky, with spacious guest rooms and suites with their beautifully simplistic design providing a comfortable space in which to relax. There is al fresco dining at the main restaurant and barbecue style feasting accompanied by great sunsets at the rooftop eatery. Wooden decking surrounds the outdoor pool landscape, and spa treatments are available.

FEATURES

99 rooms. Seasonal outdoor pools. Main restaurant, rooftop bar and restaurant. Spa treatments, gym.

OFFERS AND SAVINGS

Please call us for early booking and free night offers, honeymoon extras including a complimentary room upgrade, restrictions apply.

Holiday price band: £ up to £1500pp

Based on 7 nights' duration inclusive of return flights and private transfers (approximately 35 minutes from Ibiza airport), two adults sharing a lead-in room type on a lead-in board basis. Please refer to page 6 'Price points and star ratings'. For an accurate quote based on latest prices please call our travel experts on freephone 0800 008 7288.



Cozy room

★★★★★

IDEAL FOR COUPLES

W Ibiza

SANTA EULALIA

TRENDY AND LUXURIOUS

W Ibiza enjoys a location towards the southern end of Santa Eulalia's palm-fringed and sandy beachfront. This boho-chic design hotel feels young and fresh and brings a more playful vibe to this established part of the island. Bijou guest rooms and bold suites are designed to be both funky and luxurious. Dining can be enjoyed across six eateries, there's an adult only rooftop bar, two pools and a state of the art spa.

FEATURES

162 rooms. Two outdoor pools. Five restaurants, café, lounge, rooftop cocktail bar. Spa, fitness room.

OFFERS AND SAVINGS

Please call us for early booking offers and savings, restrictions apply.

Holiday price band: £ up to £1500pp

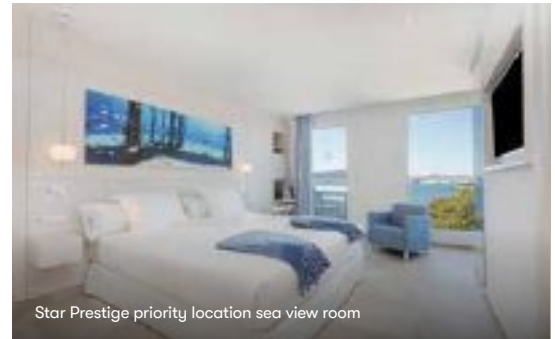
Based on 7 nights' duration inclusive of return flights and private transfers (approximately 35 minutes from Ibiza airport), two adults sharing a lead-in room type on a lead-in board basis. Please refer to page 6 'Price points and star ratings'. For an accurate quote based on latest prices please call our travel experts on freephone 0800 008 7288.

Ibiza

S'Argamassa, Santa Eulalia



Star Prestige pool



Star Prestige priority location sea view room

★★★★

Iberostar Selection Santa Eulalia Ibiza

S'ARGAMASSA, SANTA EULALIA

ADULT ONLY BEACHFRONT HOTEL

Surrounded by pine trees and set alongside S'Argamassa beach, Iberostar Selection Santa Eulalia Ibiza is a chic and contemporary style hotel catering exclusively for adults.

There is a choice of guest rooms decorated in a Mediterranean style, furnished in minimalist fashion and with balcony or terrace and a variety of views. The Agave restaurant offers international and Mediterranean cuisine, whilst the Mastella Lounge and Es Vedra bar are both great for cocktails and relaxed evenings.

There's an attractive outdoor pool, a selection of sports and activities arranged daily, a spa and gym. The beaches of Cala Pada and Cala Martina are both within a five minute walk and the centre of Santa Eulalia is a short, ten minute drive away. This hotel is exclusively for adults aged 16 years or older.

FEATURES

229 rooms. Outdoor pool. Spa Sensations wellness centre. Fitness room, aerobics, pilates, Nordic walking, spinning. Main restaurant, lounge bar, bar, pool bar. Daytime activities.

ECO LUXURY
ONLY ADULTS
OPTIONAL ALL INCLUSIVE

OUR EXPERTS SUGGEST... A Prestige room

Choose a Star Prestige room and enjoy access to exclusive Star Prestige areas including a relaxation lounge with drinks and a chill out rooftop terrace with infinity pool and open bar, as well as a late check out on your last day, subject to availability.

OFFERS AND SAVINGS

Please call us for early booking and long stay offers, all inclusive upgrades and honeymoon extras, restrictions apply.

Holiday price band: £ up to £1500pp

Based on 7 nights' duration inclusive of return flights and private transfers (approximately 30 minutes from Ibiza airport), two adults sharing a lead-in room type on a lead-in board basis. Please refer to page 6 'Price points and star ratings'. For an accurate quote based on latest prices please call our travel experts on freephone 0800 008 7288.

We categorise our price bands into £, ££ and £££. They are intended only as a price guide where £ is up to £1500 per person, ££ is from £1501 to £3000 per person and £££ is over £3001 per person.



★★★★★

IDEAL FOR COUPLES

ME Ibiza

S'ARGAMASSA, SANTA EULALIA

STYLISH, BEACHFRONT SECLUSION

In the heart of S'Argamassa, ME Ibiza enjoys a wonderful beachfront location in a secluded bay. Guest rooms and suites, some with VIP service and private jacuzzi or pool, showcase an Ibiza-inspired décor. The main pool features delicious poolside menus and daily DJs, the adult only rooftop infinity pool adds dazzling 360 degree views. The restaurants offer fine dining in the most stylish surroundings and the spa features the finest Thai massages and treatments.

FEATURES

200 rooms and suites. Outdoor pool, rooftop adult only pool. Three restaurants, two bars, wine cellar. Spa, gym. Children's area and activities.

OFFERS AND SAVINGS

Please call us for early booking offers and honeymoon extras, restrictions apply.

Holiday price band: £ up to £1500pp

Based on 7 nights' duration inclusive of return flights and private transfers (approximately 35 minutes from Ibiza airport), two adults sharing a lead-in room type on a lead-in board basis. Please refer to page 6 'Price points and star ratings'. For an accurate quote based on latest prices please call our travel experts on freephone 0800 008 7288.



Mode room



★★★★★

IDEAL FOR COUPLES

Bless Hotel Ibiza

SANTA EULALIA

ELEGANT LUXURY AND EXQUISITE DINING

Nestling by Es Cana's sandy Cala Nova cove, Bless Hotel Ibiza offers lifestyle luxury with attentive service, delectable gastronomy and beautiful interior spaces. The chic accommodation feature Coco Chanel inspired design; sea facing rooms are highly recommended. There are two infinity pools, one at the rooftop sky lounge, a serene spa for pampering treatments and fabulous dining options with the signature restaurant Etxeko offering a menu of exquisite Basque influenced cuisine. A member of The Leading Hotels of the World.

FEATURES

151 rooms and suites. Two outdoor infinity pools. Four restaurants, bar. Spa with treatments, Turkish sauna, water circuits, hydrotherapy, aromatherapy showers, jacuzzis, beauty salon. Gym.

OFFERS AND SAVINGS

Please call us for offers and savings.

Holiday price band: £ up to £1500pp

Based on 7 nights' duration inclusive of return flights and private transfers (approximately 30 minutes from Ibiza airport), two adults sharing a lead-in room type on a lead-in board basis. Please refer to page 6 'Price points and star ratings'. For an accurate quote based on latest prices please call our travel experts on freephone 0800 008 7288.



Deluxe room



★★★★★

IDEAL FOR COUPLES

Ocean Drive Talamanca

TALAMANCA

RETRO GLAMOUR

A short saunter from Talamanca Beach with Ibiza's picturesque Old Town a five minute ferry journey across the water, boutique style Ocean Drive Talamanca offers a Mediterranean design, light and clean in style, elegant architecture and refined interiors with unique furniture and textiles. There are three outdoor pools, an a la carte restaurant and spacious roof terrace with sleek bar and spectacular views. Trendy night spots and clubs are within easy reach.

FEATURES

117 rooms and suites. Outdoor pools. Restaurant, three bars. Fitness centre.

OFFERS AND SAVINGS

Please call us for offers and savings.

Holiday price band: £ up to £1500pp

Based on 7 nights' duration inclusive of return flights and private transfers (approximately 20 minutes from Ibiza airport), two adults sharing a lead-in room type on a lead-in board basis. Please refer to page 6 'Price points and star ratings'. For an accurate quote based on latest prices please call our travel experts on freephone 0800 008 7288.



Deluxe sea view room



★★★★★

ONLY ADULTS

The Standard Ibiza

IBIZA TOWN

ENVIABLE DALI VILA LOCATION

The Standard Hotels' Ibiza outpost is glamorous and sophisticated, exclusively aimed at adults, and offers friendly, attentive service. Set right in the heart of Dalt Vila and a short stroll from the marina, this modern, sleek hotel features retro style guest rooms and suites, a bistro style restaurant and lively seasonal rooftop terrace with a pool and bar open until the small hours. This hotel is exclusively for adults aged 18 years or older.

FEATURES

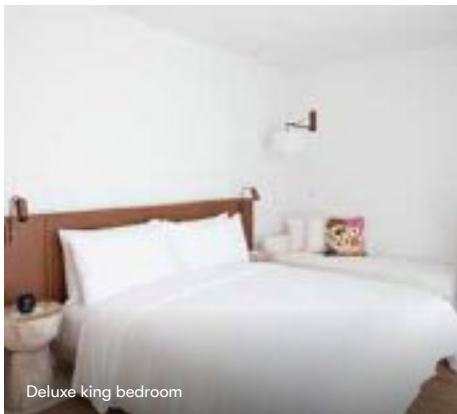
53 rooms and suites. Restaurant, bar. Small spa, gym.

OFFERS AND SAVINGS

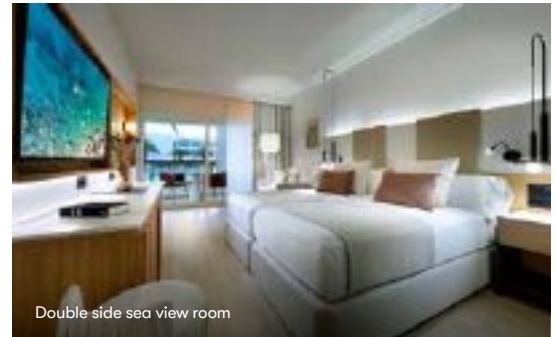
Please call us for offers and savings.

Holiday price band: £ up to £1500pp

Based on 7 nights' duration inclusive of return flights and private transfers (approximately 15 minutes from Ibiza airport), two adults sharing a lead-in room type on a lead-in board basis. Please refer to page 6 'Price points and star ratings'. For an accurate quote based on latest prices please call our travel experts on freephone 0800 008 7288.



Deluxe king bedroom



★★★★★

Grand Palladium Palace Ibiza Resort & Spa

PLAYA D'EN BOSSA

EXCELLENT FACILITIES, ENVIABLE LOCATION

In a fabulous location right on the beachfront of Playa d'en Bossa, stylish Grand Palladium Palace Ibiza Resort & Spa is a mere five minutes from shops and restaurants and 1km from the resort centre.

Modern guest rooms are set over five buildings nestling in the well-kept grounds, where there are three outdoor pools with spacious sun terraces and pool bar. There is a range of daytime activities and evening entertainment and for a spot of pampering the spa offers an array of treatments.

Children and teenagers are well catered for with clubs, an entertainment lounge, playground and a splash pool. There is a variety of dining options with show cooking at the main restaurant, four a la carte restaurants and a beach restaurant for lunchtime snacks. Guests also have full access to the sister hotel Grand Palladium White Island Resort & Spa.

FEATURES

411 rooms and suites. Three outdoor pools, children's pool. Zentropia Spa, gym. Tennis courts. Restaurants, bars.

ALL INCLUSIVE INCLUDES

Full board meals in main restaurant, ice cream, snacks. Four a la carte restaurants for dinner, reservation required. Selected local and imported drinks by the glass. Mini and teen club. Sports activities.

ALL INCLUSIVE
IDEAL FOR FAMILIES
RECOMMENDED SPA

OUR EXPERTS SUGGEST... Space for the family

Choose a master suite for ample space for the whole family. Sleeping up to four adults and two children, there are two rooms, a separate living area with sofa beds and a balcony with views of the sea.

OFFERS AND SAVINGS

Please call us for early booking offers and savings, restrictions apply.

Holiday price band: £ up to £1500pp

Based on 7 nights' duration inclusive of return flights and private transfers (approximately 20 minutes from Ibiza airport), two adults sharing a lead-in room type on a lead-in board basis. Please refer to page 6 'Price points and star ratings'. For an accurate quote based on latest prices please call our travel experts on freephone 0800 008 7288. Please note that some facilities in this all inclusive concept hotel may carry an additional charge.

We categorise our price bands into £, ££ and £££. They are intended only as a price guide where £ is up to £1500 per person, ££ is from £1501 to £3000 per person and £££ is over £3001 per person.



★★★★★

ALL INCLUSIVE
IDEAL FOR FAMILIES

Grand Palladium White Island Resort & Spa

PLAYA D'EN BOSSA

FAMILY FRIENDLY HOTEL IN CENTRAL LOCATION

Located right on the beachfront in Playa d'en Bossa, Grand Palladium White Island Resort & Spa is a five star hotel offering an excellent range of leisure facilities and dining choices.

Low storey bungalows set in the lovely grounds house airy and contemporary styled guest rooms and suites. There is a wide choice of dining options, a good range of daytime activities and evening entertainment, a wonderful spa and wellness centre, and for children, clubs and a playground.

At the centre is the large outdoor swimming pool with a pool bar serving snacks and refreshing drinks; additionally, guests also have full access to sister hotel Grand Palladium Palace Ibiza Resort & Spa.

FEATURES

430 rooms and suites. Outdoor pool. Spa and wellness centre with treatments, indoor heated pool. Four tennis courts. Restaurants, bars, café. Baby, mini and junior clubs.

ALL INCLUSIVE INCLUDES

Full board meals, continental late breakfast, ice cream, snacks, four a la carte restaurants for dinner. Selected local and imported drinks by the glass. Animation programme, mini and junior club. Sports activities.

OUR EXPERTS SUGGEST...

The superior space

A superior room would be ideal for a family; elegant, contemporary and 38m² with a double bed, sofa bed for two in the sitting area and a furnished terrace with views of the garden and pool area.

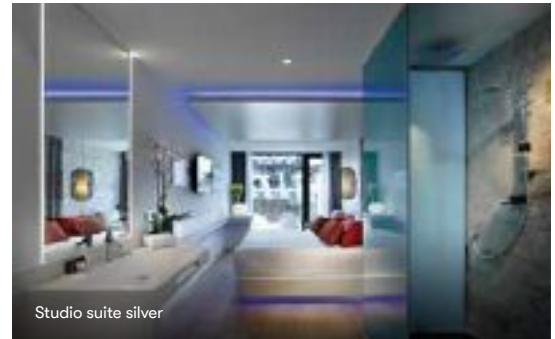
OFFERS AND SAVINGS

Please call us for early booking offers and savings, restrictions apply.

Holiday price band: £ up to £1500pp

Based on 7 nights' duration inclusive of return flights and private transfers (approximately 20 minutes from Ibiza airport), two adults sharing a lead-in room type on a lead-in board basis. Please refer to page 6 'Price points and star ratings'. For an accurate quote based on latest prices please call our travel experts on freephone 0800 008 7288. Please note that some facilities in this all inclusive concept hotel may carry an additional charge.

We categorise our price bands into £, ££ and £££. They are intended only as a price guide where £ is up to £1500 per person, ££ is from £1501 to £3000 per person and £££ is over £3001 per person.



Studio suite silver

★★★★★

IDEAL FOR FAMILIES

Hard Rock Hotel Ibiza

PLAYA D'EN BOSSA

LEGENDARY ENERGY AND LIVE ENTERTAINMENT

Located right on the seafront in Playa d'en Bossa, Hard Rock Hotel Ibiza features the brand's legendary music-inspired style and energy together with Ibiza's Mediterranean ambiance. Modern guest accommodation with colour mood lighting and aromatherapy ranges from superior rooms to impressive swim-up suites.

A selection of gastronomic experiences await with a breakfast restaurant as well as an a la carte speciality restaurant offering Spanish cuisine in a 1920s style ambience, a beach club for Mediterranean cuisine and a high-end snack bar. An outdoor stage for concerts feature local and international artists.

There are two outdoor pools and a workout facility. Family facilities include organised daytime activities, children's clubs, and a dedicated teenage area, beach club, and easy access to a wide variety of sports nearby. There's the state of the art Rock Spa for massages and treatments, with pool, sauna and relaxation area, and for iconic merchandise, there's the Rock Shop.

FEATURES

493 rooms and suites. Two outdoor pools, children's area. Spa with massage and beauty treatments, pool, sauna. Restaurants, bars. Children's clubs from six months to 11 years, teen club from 12 to 17 years. Beach club. Live music, outdoor pool stage.

OUR EXPERTS SUGGEST... The suite life

Open plan and luxurious Rock suites sleeping up to four comprise a living area, king size bedroom and a spacious, furnished outdoor terrace where you can chill out and enjoy the great views.

OFFERS AND SAVINGS

Please call us for early booking offers and savings, restrictions apply.

Holiday price band: £ up to £1500pp

Based on 7 nights' duration inclusive of return flights and private transfers (approximately 20 minutes from Ibiza airport), two adults sharing a lead-in room type on a lead-in board basis. Please refer to page 6 'Price points and star ratings'. For an accurate quote based on latest prices please call our travel experts on freephone 0800 008 7288.

We categorise our price bands into £, ££ and £££.

They are intended only as a price guide where £ is up to £1500 per person, ££ is from £1501 to £3000 per person and £££ is over £3001 per person.



★★★★★

Siau Ibiza Hotel managed by Barceló PORT DE SANT MIQUEL

A HIDDEN GEM IN THE NORTH

In a beautiful, quiet spot amidst pine trees and mountains in Port de Sant Miquel in the north of the island, Siau Ibiza Hotel is an attractive luxury hotel with a relaxed, laid-back atmosphere and easy access to a nearby sandy cove.

The contemporary Mediterranean architecture complements the natural surroundings in which it sits, and bright, airy guest rooms and suites are furnished in a boho-chic island style, with Premium Club accommodation offering enhanced services and exclusive extras.

Dining options cover traditional island cuisine, Japanese fusion, Mediterranean-inspired healthy dishes and international favourites. There is an inviting pool, daytime activities and evening entertainment with live music, and a range of wellness treatments and a fitness area and access to yoga, pilates, spinning and stretching classes. This hotel is exclusively for adults aged 18 years or older.

FEATURES

96 rooms and suites. Outdoor pool. Five restaurants and two bars. Fitness area, yoga, pilates.

ONLY ADULTS
ALL INCLUSIVE

OUR EXPERTS SUGGEST... Upgrade to Premium Club

To further enhance your stay book a spacious Premium Club room; private check-in and check-out, access to an exclusive Club lounge with complimentary drinks and snacks, exclusive pool area and beach area with sunbeds and selected activities.

OFFERS AND SAVINGS

Please call us for early booking offers, spa offers and all inclusive details, restrictions apply.

Holiday price band: £ up to £1500pp

Based on 7 nights' duration inclusive of return flights and private transfers (approximately 30 minutes from Ibiza airport), two adults sharing a lead-in room type on a lead-in board basis. Please refer to page 6 'Price points and star ratings'. For an accurate quote based on latest prices please call our travel experts on freephone 0800 008 7288.

We categorise our price bands into £, ££ and £££. They are intended only as a price guide where £ is up to £1500 per person, ££ is from £1501 to £3000 per person and £££ is over £3001 per person.



★★★★★ superior

LUXURY HOTEL

7Pines Resort Ibiza Destination by Hyatt SANT JOSEP DE SA TALAIA

EXCLUSIVE LOCATION AND GREAT FACILITIES

From its impressive clifftop setting 7Pines Resort Ibiza faces the island's famous landmark, the rocky island of Es Vedra and offers unparalleled service, outstanding views and exceptional facilities.

Set between a pine grove and the sea this extensive, sprawling village-style resort appeals to the discerning traveller with accommodation set over two zones; suites in the Laguna area are arranged around the central lagoon-style pool and ideal for families. A glorious infinity pool complete with a small chiringuito bar is for adults only and the nearest beach is 200 metres away.

The clifftop restaurant The View is open for a la carte dinner, the Cone Club offers breakfast and lunch, and is perfect for drinks and sharing dishes in the evenings, whilst sophisticated cocktails can be enjoyed at the Pershing Yacht Terrace. Further facilities include a children's club and a pool, a fitness room and a state of the art spa as well as Pershing yachts for charter. A member of The Leading Hotels of the World.

FEATURES

186 suites. Outdoor pool, adult only infinity pool, children's pool, whirlpool. Pure Seven Spa with treatments, steam bath, saunas, indoor heated pool. Meditation, yoga, fitness area. Two restaurants, cocktail bar, lobby bar, pool bars. Children's club. Three Pershing yachts.

OUR EXPERTS SUGGEST... Suite living

Book a light-filled Resort suite with sea view in the Ibicenco Village area of the complex. Located on the first floor they feature a bar area overlooking a large living room opening onto a furnished balcony with sea views.

OFFERS AND SAVINGS

Please call us for early booking offers and honeymoon extras, restrictions apply.

Holiday price band: £ up to £1500pp

Based on 7 nights' duration inclusive of return flights and private transfers (approximately 35 minutes from Ibiza airport), two adults sharing a lead-in room type on a lead-in board basis. Please refer to page 6 'Price points and star ratings'. For an accurate quote based on latest prices please call our travel experts on freephone 0800 008 7288.

We categorise our price bands into £, ££ and £££.

They are intended only as a price guide where £ is up to £1500 per person, ££ is from £1501 to £3000 per person and £££ is over £3001 per person.

Ibiza

Sant Josep de Sa Talaia



Double room with sea view

★★★★

ONLY ADULTS

Amare Beach Hotel Ibiza

SANT JOSEP DE SA TALAIA

MODERN DESIGN HOTEL RIGHT ON THE BEACH

Amare Beach Hotel Ibiza is an adult only concept hotel right on the beachfront of beautiful Cala de Bou in Sant Josep de Sa Talaia, facing the bay of San Antonio, and is focused on guests who values tranquillity, art, music and gastronomy. Guest rooms are furnished in a fresh and modern design and most enjoy views of the Mediterranean Sea.

Restaurant Mare Nostrum offers a revitalising breakfast and evening dining, Amare Lounge a late breakfast and the rooftop Hayaca a la carte restaurant specialises in Latin American cuisine, whilst the rooftop bar Belvue is the perfect setting for cocktails and live music in the evenings.

There are three outdoor pools including a rooftop pool and heated jacuzzi on the sun terrace. A range of beauty and wellness treatments are available, and guests also have use of a 24-hour gym with magnificent sea views. This hotel is exclusively for adults aged 16 years or older.

FEATURES

366 rooms. Three outdoor pools. Fitness room. Wellness centre including body and facial treatments. Watersports and scuba diving available in surrounding area. Five restaurants, four bars. Beach Club.

OUR EXPERTS SUGGEST...

A sea view

Book an elegant and spacious room with pool and sea view, double bed, a rattan hanging chair or sofa and a balcony or terrace furnished with table and chairs.

OFFERS AND SAVINGS

Please call us for early booking offers and dining upgrades, restrictions apply.

Holiday price band: £ up to £1500pp

Based on 7 nights' duration inclusive of return flights and private transfers (approximately 40 minutes from Ibiza airport), two adults sharing a lead-in room type on a lead-in board basis. Please refer to page 6 'Price points and star ratings'. For an accurate quote based on latest prices please call our travel experts on freephone 0800 008 7288.

We categorise our price bands into £, ££ and £££.

They are intended only as a price guide where £ is up to £1500 per person, ££ is from £1501 to £3000 per person and £££ is over £3001 per person.

100

Call free on 0800 707 6229 or enquire for Huge Extra Savings >>

ONLY ADULTS
ALL INCLUSIVE



★★★★★

TRS Ibiza Hotel

CALA GRACIO

IDYLLIC LOCATION

Set by two beautiful coves and 1.5km from San Antonio town, TRS Ibiza Hotel is a contemporary luxury hotel with relaxed surroundings and friendly service. Buffet and la carte dining can be enjoyed across three restaurants, with Gravity Sky Lounge the spot for live music by night and poolside lounging by day. The Signature Level features exclusive rooms with private butler service, reserved areas, privileged services including Dine Out, select menus from some of the island's best-rated restaurants, and access to events at Ushuaïa Ibiza Beach Hotel, Hard Rock Hotel Ibiza and Hi Club. This hotel is exclusively for adults aged 18 years or older.

FEATURES

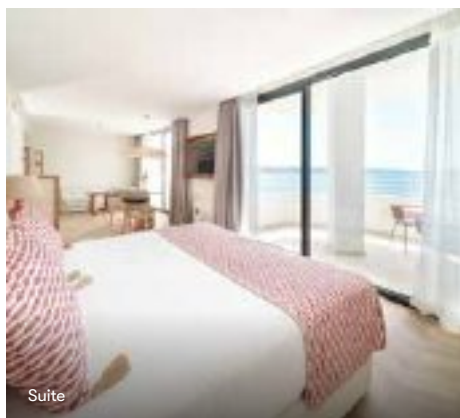
378 rooms and suites. Three pools. Three restaurants, bars. Spa, gym, yoga.

OFFERS AND SAVINGS

Please call us for all inclusive details, restrictions apply.

Holiday price band: £ up to £1500pp

Based on 7 nights' duration inclusive of return flights and private transfers (approximately 30 minutes from Ibiza airport), two adults sharing a lead-in room type on a lead-in board basis. Please refer to page 6 'Price points and star ratings'. For an accurate quote based on latest prices please call our travel experts on freephone 0800 008 7288. Please note that some facilities in this all inclusive concept hotel may carry an additional charge.



Suite



★★★★★

IDEAL FOR COUPLES

OKU Hotel Ibiza

CALA GRACIO

LAID-BACK LUXURY

Just moments from Cala Gracio bay and 15 minutes on foot from San Antonio, vibrant OKU Hotel Ibiza is a stylish, on-trend retreat popular with couples. Guest rooms and suites showcase earthy minimalism alongside luxury amenities and the two restaurants offer delectable fusion cuisine by acclaimed chef Mark Vaessen. One of the two pools is Olympic sized, adult only and the largest on the island. There is a serene spa for signature treatments at the hands of skilled therapists, and guests can make the most of yoga, pilates and the well-equipped gym.

FEATURES

189 rooms and suites. Two outdoor pools. Two restaurants and two bars. Spa and gym. Pilates, yoga.

OFFERS AND SAVINGS

Please call us for offers and savings.

Holiday price band: £ up to £1500pp

Based on 7 nights' duration inclusive of return flights and private transfers (approximately 30 minutes from Ibiza airport), two adults sharing a lead-in room type on a lead-in board basis. Please refer to page 6 'Price points and star ratings'. For an accurate quote based on latest prices please call our travel experts on freephone 0800 008 7288.



Junior suite

Your Journey and our preferred Airline Partners

Classic Collection excels in creating personalised luxury holidays. Fly, at the best available time, with the most suitable airline, from the most convenient airport.

We can book flights from any airport, with any airline, for any duration. We can mix and match airlines to maximise holiday time away; fly out and back with different airlines, at times and on days that are the most convenient. Many people like to travel from a local airport, so we feature all available charter and scheduled services. To take advantage of the reliability of scheduled flights from London, we're also pleased to offer add-on domestic flights. Our travel experts can provide further details of flight upgrades and the services provided by different airlines.



BRITISH AIRWAYS

Preferred Partner

Many of our destinations are served by British Airways and we are proud of our Preferred Partner status with this airline. Euro Traveller customers in the main cabin enjoy the highest standards expected of British Airways. With regard to luggage, we include one bag (maximum 23kg) per person.

Cabin upgrades are available dependent on the route. British Airways' Club Europe benefits include generous legroom, meals and snacks relevant to the time of day and flight duration, complimentary drinks (wine, beer and spirits), dedicated check-in desks and use of an airport lounge. Club Europe customers also benefit from an increased hold luggage allowance and two bags (maximum of 23kg each) per person.

Charter flights Through a range of charter airline partners, we are delighted to offer a choice of direct flights from many UK airports. These flights may restrict your holiday duration to 7 or 14 nights, but we know that to fly direct to your holiday destination from your local airport is normally preferable.

Domestic flight connections via London So that our customers can take advantage of the flexibility and reliability of scheduled flights from London, we are pleased to offer domestic flights from all UK airports.

Private jets We enjoy partnerships with fully licensed companies specialising in the provision of private aircraft. For total flexibility, privacy and convenience, we can charter a private aircraft giving you the ability to create your own holiday timetable. Choose the aircraft type, seating arrangements, level of service, departure airport and flight timings that suit you best.

No frills flights No frills flights are often available from regional airports and do not provide complimentary drinks or meals although you may purchase refreshments on board.

Airport Lounges Our travel experts can arrange airport lounge access in many of our departure and destination airports allowing you a relaxing start and finish to your holiday.

Holiday Information

MAKING A BOOKING

If you book through a travel agent, they will check details and availability with us and if you accept these as satisfactory, a formal contract will exist between you and Classic Collection Holidays. If you make a booking directly with us, we will discuss and confirm the details of the holiday with you and, if you accept these as satisfactory, a formal contract will exist between you and Classic Collection Holidays and your credit card details will be taken at that time. In either event, you must pay the appropriate initial payment or, if within 8 weeks of departure, the full holiday price. Late bookings made within 8 weeks of departure require that the total balance is paid immediately. Normal cancellation charges apply to late bookings should you subsequently cancel. Recommendations can be made by our team although the final decision as to hotel and resort suitability is ultimately your choice and we cannot be held liable for our suggestions. To help maintain our high levels of service, telephone calls may be recorded.

Special requests - At the time of booking please inform us of any special requests such as adjoining rooms, dietary requirements etc. We will inform the property management and/or carrier of your requirements but we cannot guarantee that these will be met. Where additional local costs are involved, payment should be made directly to the supplier. If you have a disability or suffer mobility difficulties, please complete our Mobility Questionnaire before we confirm your booking. You may wish to research the suitability of your chosen property with Tourism for All, visit www.tourismforall.org.uk

BEFORE YOU TRAVEL

Passports, visas and travel advice - Your passport, visa, any international driving permits and immigration requirements are your responsibility and you should confirm these with the relevant Embassies and/or Consulates. We do not accept any responsibility if you cannot travel because you have not complied with any passport, visa or immigration requirements. For British citizens, a full ten-year passport with a minimum of six months validity from the intended date of return to the UK is required for travel. Children under 16 must hold their own five-year passport. Contact the UK Passport Advice line 0300 222 0000 or www.gov.uk/browse/abroad/passports for information. Please note that your name and initials on your flight tickets/documentation must match those on your passport. For up to date visa information you should check the Entry Requirements page relevant to the country/ies you are visiting on the UK Foreign, Commonwealth & Development Office (FCDO) website at www.gov.uk/foreign-travel-advice ensuring that you allow sufficient time to apply for any necessary visas, or to purchase e-visas via foreign government websites. If you do not hold a British Citizen's passport you should check your requirements with the relevant Embassy or Consulate. We recommend that you seek advice from the Foreign, Commonwealth & Development Office regarding your holiday destinations before booking your holiday and continue to check for updated information.

Staying safe on holiday - Your safety is of paramount importance to us whilst you are on holiday; unfortunately, crime is prevalent the world over and we urge you to take precautions overseas

as you would at home. We encourage you to visit www.counterterrorism.police.uk/staysafe/ which provides information and advice for holidaymakers.

Travel documentation - Our travel documentation including e-ticket information and holiday itinerary will normally be dispatched approximately 30 days prior to departure although very late booking confirmations and e-ticket details may be forwarded by email only.

Vaccinations & health requirements - In some countries it is wise, and sometimes obligatory to have certain vaccinations. As guidance frequently changes it is strongly recommended that you check with your GP's surgery or www.travelhealthpro.org.uk for up to date information regarding health risks or vaccination requirements as soon as possible but at least 6 weeks in advance of travel. If you are travelling with medication, please contact the relevant Embassy or Consulate for up to date guidance on regulations concerning the carriage of drugs.

Mosquitoes - In many countries mosquitoes can spread disease such as dengue, chikungunya, West Nile, malaria, yellow fever and Zika virus. It is your responsibility to seek medical advice prior to travel, particularly if you have an underlying medical condition, are pregnant or plan to become pregnant within 6 months of your return. It is important to seek medical attention if you have a fever or display any other symptoms. Should you become unwell on your return please ensure that you inform your doctor of any overseas trips you have taken in the last 12 months.

UK airport charges - To cover the cost of development or improvement works, some UK airports charge an airport improvement fee which is payable within the relevant check-in area.

OUR BROCHURE & HOLIDAY DETAILS

Brochure accuracy - This brochure was printed on 31 March 2023. Details are valid until publication of any revised edition, or you are notified otherwise by your travel agent or our reservations staff. All the facts in this brochure are re-checked for accuracy by our staff and, where possible, our hoteliers, although of course it is always feasible, especially in low season, that facilities may be unavailable as hotels, especially those which are open all year round, will require maintenance (e.g. pools), redecoration and refurbishment. Service within hotels may change from time to time e.g. dining changes from traditional waiter service to buffet style. Such events are regrettably beyond our control although we will alert you to significant changes at time of booking, or if you have already booked, we will contact you as soon as is reasonably possible if there is time before your departure.

Room types and upgrades - Single rooms normally carry a supplement which is for the convenience of having a room to yourself and location/facilities may be inferior to that of a twin room. In family rooms and twin or double rooms that take additional beds, do note that the extra bed/s could be of a folding or convertible sofa type and beds for children may not be full adult-sized singles. When additional beds are put in a room, floor space will be reduced, and cupboard access may be limited. Junior suites normally have a sitting area, and suites have a sitting area or separate sitting room. Ocean or sea view rooms enjoy views of the ocean/sea although foliage, buildings etc may sometimes interrupt a full view.

Ocean facing or sea facing rooms will face the ocean/sea but will normally be on lower floors where the view of the ocean/sea may be obscured through gardens/trees etc. Side ocean view or side sea view rooms tend to offer a restricted view of the ocean or sea. Please note that the main additional feature of any room category attracting a supplement may often be its view and that this will not necessarily include additional internal room facilities or amenities.

Hotels for couples - Some hotels, particularly in long haul destinations cater for mixed sex couples only, and in some countries a same sex relationship will be deemed illegal. We therefore recommend that before confirming your holiday you thoroughly research your destination.

Hotel facilities - Some facilities may incur a local charge e.g. sun loungers, sports, games, use of fitness/leisure and spa facilities, children's clubs and children's amenities, safety deposit boxes and car parking. The operation of some facilities may be dependent upon seasonal demand and/or hotel occupancy rates.

Air-conditioning - Most hotels offer in-room air-conditioning although this may be controlled centrally and might only be available at certain times of the year or subject to the prevailing weather.

Check in/out & duration of holiday - On arrival at hotels, check in time is normally 4pm and check out 11am. Most hotels can provide luggage storage and changing room facilities if you arrive earlier or stay later, and you may be able to pay locally for a late check out from your room. The number of nights on your confirmation invoice refers to the number of nights reserved for you in your hotel. If you arrive very late at night or in the early hours of the morning, your accommodation is immediately available as it will have been reserved for the whole night and this will count as one of your holiday nights.

Meal arrangements - Full board normally consists of breakfast, lunch and dinner; half board is breakfast and dinner. Full board or half board arrangements are generally served in the main dining room. Some hotels offer table d'hote. A full a la carte menu is available for an extra cost in a number of our hotels and customers should note that when half or full board is offered as a la carte dining, exclusions such as lobster, prawns etc may be available for a local supplement. Most hotels offer the option of booking any number of nights on half or full board so that you can pay in the UK and decide which nights you wish to eat at the hotel when you arrive: simply ask our travel consultants for details.

All inclusive - Arrangements vary widely between hotels and where this concept is offered. It is wise to check specific details at booking stage as many hotels only include local spirits and wines and may limit your choice of restaurant. As with meal arrangements (above), if a full a la carte menu or restaurant is not included within the all inclusive concept, it may be available for an additional cost and exclusions such as lobster, prawns etc may be available for a local supplement.

Dress code - Owing to the sophisticated nature of many of our hotel restaurants, shorts and t-shirts are unacceptable for evening dining and slightly more formal attire is recommended. Formal dress is normally required for gala dinners. Specific dress is recommended for certain tours and safaris and this will be communicated at time of booking confirmation.

Children & infants - To take advantage of children's prices, a child must normally be aged 2-11 years at the date of return and must share a room with two adults or full fare paying passengers, although some hotels offer special reductions for a second child sharing the room, or for older children, or for a child travelling with one adult, or where children share an interconnecting room. Children paying child prices can normally benefit from reduced half board supplements (when booking same board basis as adults) and will not normally be charged room supplements although if these are payable, relevant prices will be advised at time of booking. Normally children staying in their own room will be charged as full fare paying passengers including relevant room and half board supplements. Please note that infants and children's dates of birth (on the date of return from holiday) must be advised. Infants (under two years of age at date of return) pay a charge to cover any flight costs. Hotels will charge locally for food and cots. Please note that the regulations applied to the manufacture of cots in other countries are not as high as those in the UK and may not conform to British safety standards.

Child seats - Although we can request child seats for private transfers in resort, they cannot always be guaranteed and in such cases, we suggest that you bring your own.

Babysitting - Arrangements are available at many properties although the service will vary, and the sitter may not remain in the room with the child. If you wish to use a babysitting service, you must arrange and pay for it locally with the sitter who is frequently a member of the hotel staff not qualified in child care.

Health & safety - We endeavour to regularly check all our properties for compliance in respect of local regulations. However, guests must exercise caution particularly with regard to fire safety, swimming pools, balconies, lifts etc, where compliance may not be equal to British standards.

Resort development - May be in progress and occasionally the work involved will result in building work being in evidence. We cannot forewarn of all developments, however, if the works taking place, either through noise or other inconvenience, is felt by us to affect your overall holiday enjoyment, we will supply all such information. Many of our resorts are in popular holiday destinations which invariably have busy road networks so you may encounter some traffic disturbance especially during peak season.

Representation - Owing to the specialist nature of our programme it is not always practical to visit our guests in their hotel especially during multi-centres, island hopping or fly drive holidays. All customers will be given emergency contact numbers and departure details will be confirmed during your stay. Our resort representative or local agent will normally make contact within 24 hours of your arrival to ensure that everything is in order, although should you encounter any difficulties during your stay, please contact your hotel manager in the first instance, and if further

assistance is required, simply contact our resort manager or local agent who will endeavour to resolve the problem.

YOUR HOLIDAY PRICE INCLUDES

1. Return flights (or other transportation) between the UK and overseas (where applicable)
2. Luggage allowance as specified on your documentation
3. Private transfer or hire car between the overseas airport and your hotel (as detailed on our confirmation)
4. Accommodation and board basis as detailed on your confirmation
5. Services of our representative or local office/agent
6. Any additional items or pre-booked excursions, tours or experiences as detailed on your confirmation

Please note that refunds are not available for services provided but not utilised

YOUR HOLIDAY PRICE EXCLUDES

1. Transport between your home and departure airport
2. Travel insurance
3. Meals and refreshments enroute, except those included on aircraft
4. Optional excursions (unless pre-booked through us)
5. Cost of passports and relevant visas
6. Cots and local infant charges
7. Excess baggage including golf clubs etc
8. Locally payable tourist or environmental taxes (where relevant)

PLEASE NOTE Booking Conditions and Holiday details constantly change. Please see our website for up to date information.

Corporate social responsibility - The paper used in our brochures is from sustainably managed forests and controlled sources. We contribute annually to The Travel Foundation to offset emissions from our staff flights.

Visit www.thetravelfoundation.org.uk to see details of their work. We also support Travelife; a global sustainability organisation which works closely with hotels helping them to improve their social, economic and environmental impacts. Additionally, we have formed an association with The Born Free Foundation, an international wildlife charity that campaigns to 'keep wildlife in the wild', see www.bornfree.org.uk for more details.

100% FINANCIAL PROTECTION

All the flight inclusive holidays within this brochure are financially protected by the ATOL scheme under ATOL number 5837. When you pay you will be supplied with an ATOL certificate (for further information about financial protection please see our booking conditions and www.atol.org.uk). For holidays and travel arrangements which do not include travel by air, your financial protection is administered by the Association of British Travel Agents (ABTA) under membership number W5429. In the unlikely event of our insolvency, the CAA and/or ABTA will ensure that you are not stranded abroad and will arrange to refund any money you have paid to us for an advance booking. ABTA members help holidaymakers get the most from their travel arrangements, and assist them in the unlikely event that things do not go according to plan. Under ABTA's Code of Conduct, we maintain a high standard of service to our customers. For

further information about ABTA, the Code of Conduct, and the arbitration scheme, contact ABTA www.abta.com

Coronavirus Covid-19 - Given the introduction of new health and hygiene requirements related to the Coronavirus Covid-19 pandemic, certain amenities and facilities mentioned in this brochure may be limited or unavailable. Social distancing measures, mandatory health screening, temperature checks and quarantine may be in place during your journey, in your holiday destination and on your return to the UK. Where we are made aware of any changes which we believe might have a significant impact on your holiday, we will endeavour to let you know. However, changes may be implemented at any time and at short notice. We ask for your understanding if we have not been able to inform you of any changes before your departure on holiday. Please do not travel if you have symptoms of Coronavirus Covid-19.

Booking conditions

OUR COMMITMENT TO YOU

1. Provision of your holiday We will arrange for the provision to you of the services which make up the inclusive holiday as confirmed to you. These services will be provided either directly by us or by independently contracted suppliers. When you, or your travel agent, ask for your holiday booking to be confirmed, we allocate your chosen holiday to you and give confirmation of the booking at that moment. It is then that a firm contract exists between you and Classic Collection Holidays (Registered in England no. 1512421) on the basis of these booking conditions. This also acts as your acceptance of our booking conditions and your holiday is secured from that moment. If your holiday includes flight arrangements, you will be issued with an ATOL certificate immediately and, in any event, you will receive a holiday confirmation invoice verifying the details. All holidays and offers advertised in the brochure are subject to availability and are as confirmed to you by telephone or on your Holiday Confirmation Invoice.

2. Your holiday price

A. When you book Hotels practice fluid pricing which means that costs may significantly increase during periods of high demand. Offers may not be available where we have exceeded our contractually pre-allocated rooms at certain hotels. The government charges a levy to cover financial protection in the event of an airline failure and we automatically add this to your invoice total at the booking stage. Once you have confirmed your holiday booking, the price is protected subject to clause 2D of these booking conditions. Please note that not all hotel features detailed are complimentary, and some are subject to seasonal demand.

B. VAT and Exchange rates Our VAT Registration number is 503 944 749 and all prices quoted include VAT where relevant (at 20% at time of going to press). Please note hotel costs, transfers, resort representation, excursions, local taxes and part of the flight cost are typically paid in the currency of your holiday destination country. Aviation fuel is paid in US Dollars. All of these costs are affected by changes in the cost of buying foreign currency. We reserve the right to increase our prices in accordance with these booking conditions.

C. Surcharges (after booking) Once you have booked, the price of your holiday travel arrangements may vary owing to changes in transportation costs such as fuel, scheduled airfares and any other airline cost changes which are part of the contract between airlines (and their agents) and the tour operator or organiser, and also in respect of government action such as changes in VAT or any other government imposed changes. In the case of any small variation, an amount equivalent to 2% of the price of your travel arrangements, and any amendment charges, will be absorbed or retained. For larger variations, this 2% will still be absorbed for increases but not retained from refunds. In either case there will be an administration charge of £1 per person together with an amount to cover agent's commission. In the unlikely event that this means that you have to pay an increase of more than 8% of the price of your holiday travel arrangements, you may cancel your booking and receive a full refund of all monies paid, except for any amendment charges. Should you decide to cancel for this reason, you must exercise your right to do so within 14 days from the issue date printed on your final invoice.

D. Tourist or environmental tax Some regions and cities impose a tourist or environmental tax.

Amounts often vary between region and hotel star rating and often are payable by customers locally on departure from their accommodation. Taxes may be introduced or changed without prior notice and our travel consultants are happy to advise current rates where applicable.

3. If your booking is changed It is unlikely that your booking will have to be changed, but we do plan the arrangements many months in advance, therefore we reserve the right to do so at any time. Most of these changes are very minor, but where they are major, we will inform you or your travel agent as soon as reasonably possible if there is time before your departure. A major change is one that is made to a major part of your holiday arrangements before departure, such as a change of your departure airport (except between London airports), resort area or time of departure or return by more than twelve hours or offering accommodation with a lower category rating. If we must make a major change you have the choice of the following: A accepting the changed arrangements as notified to you, B purchasing another available holiday from us, or C cancelling your holiday and receiving a full refund of all monies paid. Additionally, if we make a major change after you have paid the full balance of your holiday and you accept A, B or C you will be entitled to compensation on the scale shown below.

Period before scheduled departure within which a major change is notified to you or your travel agent	Compensation per adult
More than 56 days	Nil
43-56 days	£20
29-42 days	£30
15-28 days	£40
0-14 days	£50

Important note Compensation payments do not apply to changes caused by reason of war or threat of war, riot, civil strife, terrorist activity, industrial disputes, natural and nuclear disasters, fire, or other circumstances that may amount to force majeure.

4. If your holiday is cancelled We reserve the right in any circumstance to cancel your holiday and, in this event, we will return to you all money you have paid us or will offer you an alternative holiday of comparable standard to purchase. In no case, except for those beyond our control, will your holiday be cancelled after the balance is paid and, in such cases, compensation will be paid per clause 3.

5. What happens to complaints As members of ABTA (membership number W5429) we are obliged to maintain a high standard of service to you which is set out in a Code of Conduct. If we can't resolve your complaint (see clause 5 in **Your Commitment to Classic Collection Holidays** below) you may use ABTA's arbitration scheme which is approved by the Chartered Trading Standards Institute. Further information on the Code and ABTA's assistance in resolving disputes can be found online at www.abta.com

6. Our responsibility for your holiday

We accept responsibility for ensuring that all component parts of the inclusive holiday, limited to items included on confirmation invoice, and subject to the paragraph entitled Air Passenger Rights below, are supplied to you as described in this brochure and to a reasonable standard. If any such part is not provided to your satisfaction owing to the fault of our employees, agents, or suppliers, we will pay you appropriate compensation if this

has affected the enjoyment of your holiday (see Important note in paragraph 3 above). Our liability in this respect is limited to a maximum of three times the value of the holiday. We must ask you however, to be patient and understanding in the event of unforeseen alterations to your holiday made by our suppliers over whom we have no direct control.

Air Passenger Rights Under EU law you have rights in some circumstances to refunds and/or compensation from your airline in cases of denied boarding, cancellation or delay to flights. Full details of these rights will be publicised at EU airports and will also be available from airlines. However, reimbursement in such cases is the responsibility of the airline and will not automatically entitle you to a refund of your holiday cost from us. Your right to a refund and/or compensation from us is set out in paragraph 3. If your airline does not comply with these rules you can make a complaint via the Civil Aviation Authority www.CAA.co.uk

7. Excursions (whilst participating in arrangements made by us)

Excursions, tours or experiences that you may choose to book or pay for locally whilst you are on holiday are not part of the holiday provided by us and not included within the package. For any excursion or other tour that you book, your contract is with the operator of the excursion or tour and not with us and we are not responsible for the provision of the excursion or tour or for anything that happens during its provision.

8. Personal Injury (whilst participating in arrangements made by us)

We have taken all reasonable and proper steps to ensure that proper arrangements have been made for all the holidays which are advertised in this brochure and that the suppliers of the various services which will be provided to you as part of the inclusive holiday are efficient, safe and reputable businesses, and that they comply with the local and national laws and regulations of the country in which they provide those services. We have no direct control over the provision of services to customers by suppliers. However, subject to the Notes below, we will pay to our customers the equivalent of such damages as they would be entitled to receive under English law in an English Court for any personal injury to the customer, including illness or death, caused by the negligence, as understood in English Law, of the servants or agents of ourselves or of any of our suppliers contracted or sub-contracted by us to provide any part of the arrangements for your holiday as described in this brochure. With regard to any relevant international convention for example, the Montreal Convention in respect of travel by air, the Athens Convention in respect of travel by sea, the Berne Convention in respect of travel by rail, and the Paris Convention in respect of the provision of accommodation, which limit the amount of compensation that you can claim for death, injury, delay to passengers and loss, damage and delay to luggage, we are to be regarded as having all benefit of any limitation of compensation contained in these or any conventions. Copies of these can be made available on request.

9. Personal Injury (unconnected with travel arrangements made by us)

If you, or any member of your party, suffer death, illness or injury whilst overseas arising out of an activity which does not form part of your holiday arrangements or an excursion arranged through us, we shall at our discretion, offer advice, guidance and assistance. Where legal action is contemplated and you want

our assistance, you must obtain our written consent prior to commencement of proceedings. Our consent will be given subject to you undertaking to assign any costs or benefits received, under any relevant insurance policy to ourselves. We limit the cost of our assistance to you or any member of your party to £5,000. Under your travel insurance cover, you must make an insurance claim under the legal expenses section in respect of any legal fees incurred abroad for that purpose.

Notes in respect of paragraphs 8 & 9 We would request that you (a) notify us of any claim for personal injury within 2 months of your return from holiday; (b) assign to Classic Collection Holidays any rights against a supplier or any other person or party you may have relating to the claim; and (c) agree to co-operate fully with us should our insurers wish to enforce those rights. This assignment is necessary to enable us to try to recover from suppliers any compensation paid to customers and associated costs as a result of personal injury to customers caused by the negligence of those suppliers. It is not our wish to profit from such assignment, and in the unlikely event of our recovering more than such compensation and costs, any excess will be paid to the injured customers.

YOUR COMMITMENT TO CLASSIC COLLECTION HOLIDAYS

1. Your holiday contract As soon as your holiday booking is confirmed, a firm contract exists between you and Classic Collection Holidays on the basis of these booking conditions which are governed by English law and the jurisdiction of the English Courts. You may however choose the law and jurisdiction of Scotland or Northern Ireland if you wish to do so. Any disputes arising will be heard in the English Courts unless you prefer the courts of Scotland or Northern Ireland.

2. Payment for the holiday You pay a deposit of £150 per person short haul or £200 per person long haul (or an agreed sum to cover non-refundable flight seats and/or hotel or other costs) when you book. This is your commitment until 8 weeks before departure when your final balance is due, unless otherwise specified at time of booking. You must pay the balance at least 8 weeks before departure. For bookings within 8 weeks of departure, full payment is required at time of booking. If payment is not received as above, we reserve the right to treat your booking as cancelled and your deposit/s would be forfeited. If you pay a travel agent for your holiday, they will hold that money as our agent from the time they receive it until they pay it to us. Deposits and balances paid to us can be made by bank transfer, cheque or card.

3. If you change your booking If you want to change any details of your booking (e.g. transfer to a different holiday, substitution of a passenger, departure date or airport), we will do our best to help as soon as we receive your request in writing. We charge an amendment fee of £25 per person for each detail of the booking to be changed and, in addition to the amendment fee, we will charge for any additional costs we incur in making the amendment/s. You should give us reasonable notice of changes and please note that it is highly likely that amendment costs will increase the closer the change is made to your departure date. If amendments to a booking are made, and the booking is subsequently cancelled, we reserve the right to charge the original cancellation charges that would have been payable prior to the amendment.

IMPORTANT

Some arrangements (e.g. flights purchased from certain airlines and certain hotel bookings or other costs) may not be refundable or transferable after a reservation has been made and any alteration request may incur a cancellation charge of up to 100% of that part of the holiday arrangements. Where the price varies depending on the number of persons travelling and the numbers are amended, the price will be recharged based on the new party size. Any increase in price per person payable as a result of a part cancellation is not a cancellation charge and will not normally be covered by your chosen insurance. A separate cancellation charge will be levied in respect of bookings cancelled in accordance with paragraph 4 below. A new confirmation invoice will be issued as appropriate on which the cancellation charges will be shown.

4. If you cancel your booking You or any member of your party may cancel your booking, or part of it, once it has been confirmed, but the instructions will only be valid if in writing and signed by the person who confirmed the booking. Your written instructions should go either to the travel agent you booked with, asking them to notify us immediately, or if you booked direct, to us. Cancellation fees are on the scale shown, although please note that some holiday components have more restrictive cancellation terms and if this is the case, these will be communicated at time of confirmation. The amount payable depends on when we receive your written instructions.

Period before scheduled departure within which written holiday instructions are received by us	Amount of cancellation (% of total price)
More than 56 days	Deposit/initial payment
43-56 days	30% or deposit if greater
29-42 days	50% or deposit if greater
15-28 days	70% or deposit if greater
8-14 days	90% or deposit if greater
7 days or fewer	100%

5. If you have a complaint If you have a complaint about your holiday please refer the matter to the supplier immediately (airline, hotel, car hire company etc) and our local or telephone agent/representative in resort. Matters can most easily be resolved for you on the spot when the supplier can see and understand the exact nature of any problems. If your problem remains unresolved you must contact us using the contact details on your travel documentation and we will do everything reasonably possible to resolve your complaint whilst you're away. It is unreasonable to take no action whilst on holiday, then complain afterwards. In the unlikely event that matters cannot be resolved to your satisfaction our agent/representative will ask you to record details on a holiday report form of which you will be given a copy, and you must then follow up your report by contacting our Customer Relations team within 28 days of return.

6. Holiday illness If you, or any member of your party, become unwell whilst on holiday you must consult a local doctor in order to receive appropriate treatment and to obtain a full medical report. You must also report your illness as soon as reasonably practicable to our local or telephone agent/representative, the contact details of whom can be found on your travel documents.

Notes in respect of paragraphs 5 & 6 Failure to follow the procedures set out in paragraphs 5 and 6 above may reduce or extinguish any rights you have to claim compensation from us or any of our

suppliers either in accordance with these booking conditions or otherwise.

7. Holiday participation We reserve the right to decline to accept or retain any person as a customer if their conduct is disruptive and affects the enjoyment of other holidaymakers, and we shall be under no liability for any extra costs incurred by such a person as a result of our doing so. Aircraft captains are legally entitled to deny boarding to any passenger presenting themselves at the aircraft who, at the captain's absolute discretion, are unacceptably under the influence of alcohol or drugs. Any passenger who is denied boarding on the outbound flight for that reason, shall be deemed to have given notice of cancellation of his/her booking at that moment, and cancellation charges will apply in accordance with paragraph 4.

8. Your accommodation is only provided for the use of passengers shown on the confirmation invoice as confirmed by us; subletting, sharing or assignment is prohibited.


9. Your travel ticket conditions When you travel with an air or sea or rail carrier, their conditions of carriage apply, some of which limit liability. These conditions are often the subject of international agreements between countries, and copies of the conditions which apply are available for inspection at the travel agent where you book your holiday.


10. Travel Insurance We strongly recommend that you and all members of your booking are adequately insured on holiday and that the insurance is suitable for your needs and the type of activities you will be undertaking as part of your holiday. You are responsible for indemnifying us in full in the event that we incur any losses or expenses arising out of your failure to take out adequate insurance cover.


11. Data Protection & GDPR Classic Collection Holidays is registered under the Data Protection Act 1988 and deals with all personal data in accordance therewith. It is, of course, necessary for us to pass personal data to airlines, hotels, transportation companies, insurers and other agents in order that we can arrange your holiday. By confirming a booking with us, you have consented to allow the passing on of such data as we determine necessary for that purpose. Under the Data Protection Act, you have the right to inspect relevant personal information held by us. On 25 May 2018, the General Data Protection Regulation (GDPR) came into force and relevant information including our role as data controller, is detailed in the privacy policy statement on our website.

12. If we become insolvent By confirming a booking with us, you agree that, in the event of our insolvency, where applicable ABTA may arrange for the services you have bought to continue, or for a suitable alternative to be provided at the same cost as your original booking. You also agree to accept that in circumstances where the travel service supplier provides the services you have bought, you agree to pay any outstanding sum under your contract with us to that alternative travel service provider. However, you also agree that in some cases the services will not be provided, in which case you will be entitled to make a claim under ABTA's Scheme of Protection (or your payment card issuer where applicable) for a refund of the monies you have paid.

CONTACT US

 0800 707 6229

 info@travelclubelite.com k

 www.travelclubelite.co.uk

